

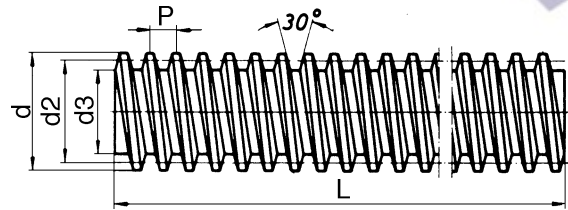
## Trapézové vodiace skrutky a matice



# Trapézové vodiace skrutky

valcovaný závit, tolerancia 7e

Cementovaná oce Ck 15  
DIN 103



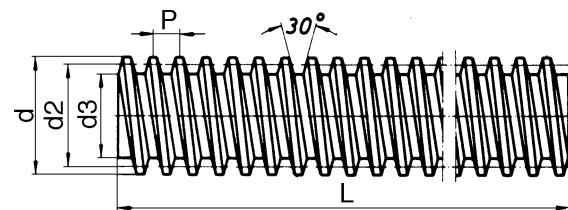
Pravý Obj. číslo	avý Obj. číslo	Závit d2 d x P	Stredný Ø		Jadro Ø d3 min.	Tolerancia		D žka	kg/m
			min.	max.		Stúpanie max. P/ 300 mm K	Polomer ohybu max.X/ 300 mm		
T 29683	T 44284	Tr. 10 x 2	8.739	8.929	6.89	300	0.5	3000	0.50
T 17545	T 23239	Tr. 10 x 3	8.191	8.415	5.84	300	0.5	3000	0.45
T 17546	T 23240	Tr. 12 x 3	10.191	10.415	7.84	300	0.5	3000	0.75
T 17547	T 23241	Tr. 14 x 4	11.640	11.905	8.80	300	0.5	3000	0.89
T 17548	T 23242	Tr. 16 x 4	13.640	13.905	10.80	50	0.1	3000	1.21
T 29684	T 44394	Tr. 18 x 4	15.640	15.905	12.80	50	0.1	3000	1.58
T 17549	T 23243	Tr. 20 x 4	17.640	17.905	14.80	50	0.1	3000	2.00
T 29686	T 44395	Tr. 22 x 5	19.114	19.394	15.50	50	0.1	3000	2.23
T 17550	T 23244	Tr. 24 x 5	21.094	21.394	17.50	50	0.1	3000	2.72
T 29693	T 44396	Tr. 26 x 5	23.094	23.394	19.50	50	0.1	3000	3.26
T 29694	T 44397	Tr. 28 x 5	25.094	25.394	21.50	50	0.1	3000	3.85
T 17551	T 23245	Tr. 30 x 6	26.547	26.882	21.90	50	0.1	3000	4.50
T 29695	T 44398	Tr. 32 x 6	28.547	28.882	23.90	50	0.1	3000	5.18
T 17552	T 23246	Tr. 36 x 6	32.547	32.882	27.90	50	0.1	3000	6.71
T 17553	T 23247	Tr. 40 x 7	36.020	36.375	30.50	50	0.1	3000	8.00
T 29696	T 44400	Tr. 44 x 7	40.020	40.275	34.50	50	0.1	3000	9.87
T 29697	T 44401	Tr. 48 x 8	43.468	43.868	37.80	100	0.1	3000	11.95
T 17554	T 23248	Tr. 50 x 8	45.468	45.868	39.30	100	0.1	3000	13.05
T 29698	T 44403	Tr. 60 x 9	54.935	55.360	48.15	200	0.3	3000	17.98
T 29699	T 44404	Tr. 70 x 10	64.425	64.350	57.00	200	0.3	3000	26.00

# Trapézové vodiace skrutky "nerez"

rezaný závit, tolerancia 7e

DIN 103

1.4021 / 1.4305\*



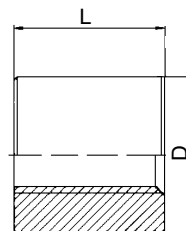
Pravý Obj. číslo	Závit d2 d x P	Stredný Ø		Jadro Ø d3 min.	Tolerancia		D žka	kg/m
		min.	max.		Stúpanie max. P/ 300 mm K	Polomer ohybu max.X/ 300 mm		
T 17556	Tr. 12 x 3	10.191	10.415	7.84	300	0.5	3000	0.746
T 17558	Tr. 16 x 4	13.640	13.905	10.80	50	0.1	3000	1.208
T 17559	Tr. 20 x 4	17.640	17.905	14.80	50	0.1	3000	2.000
T 17560	Tr. 24 x 5	21.094	21.394	17.50	50	0.1	3000	2.720
T 17561	Tr. 30 x 6	26.547	26.882	21.90	50	0.1	3000	4.500
T 17562	Tr. 36 x 6	32.547	32.882	27.90	50	0.1	3000	6.710
T 17563	Tr. 40 x 7	36.020	36.375	30.50	50	0.1	3000	8.000

# Trapézová matica

valcová, tolerancia 7H

DIN 103

vi .nižšie



## Automatová ocel

Pravá Obj. číslo	avá Obj. číslo	Závit d x P	Vonkajší Ø D	L = 1.5 x d	kg
T 29646	T 44287	Tr. 10 x 2	22	15	0.037
T 17565	T 23249	Tr. 10 x 3	22	15	0.037
T 17566	T 23250	Tr. 12 x 3	26	18	0.064
T 17567	T 23251	Tr. 14 x 4	30	21	0.096
T 17568	T 23252	Tr. 16 x 4	36	24	0.192
T 29647	T 44298	Tr. 18 x 4	40	27	0.240
T 17569	T 23253	Tr. 20 x 4	45	30	0.315
T 29648	T 44299	Tr. 22 x 5	45	33	0.320
T 17570	T 23254	Tr. 24 x 5	50	36	0.450
T 29649	T 44300	Tr. 26 x 5	50	39	0.465
T 29650	T 44301	Tr. 28 x 5	60	42	0.780
T 17571	T 23255	Tr. 30 x 6	60	45	0.800
T 29651	T 44302	Tr. 32 x 6	60	48	0.860
T 17572	T 23256	Tr. 36 x 6	75	54	1.520
T 17573	T 23257	Tr. 40 x 7	80	60	1.892
T 29652	T 44303	Tr. 44 x 7	80	66	2.040
T 29653	T 44304	Tr. 48 x 8	90	72	2.600
T 17574	T 23258	Tr. 50 x 8	90	75	2.775
T 29654	T 44305	Tr. 60 x 9	100	90	3.865
T 29655	T 44306	Tr. 70 x 10	110	105	5.115

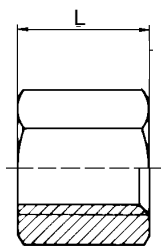
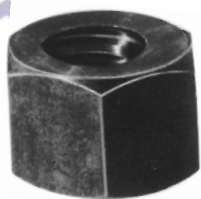
## Bronz 50

Pravá Obj. číslo	avá Obj. číslo	Závit d x P	Vonkajší Ø D	L = 2 x d	kg
T 29619	T 44307	Tr. 10 x 2	22	20	0.054
T 29621	T 44308	Tr. 10 x 3	22	20	0.056
T 29622	T 44309	Tr. 12 x 3	26	24	0.092
T 29623	T 44310	Tr. 14 x 4	30	28	0.108
T 29624	T 44311	Tr. 16 x 4	36	32	0.240
T 29625	T 44312	Tr. 18 x 4	40	36	0.332
T 29626	T 44313	Tr. 20 x 4	45	40	0.468
T 29627	T 44314	Tr. 22 x 5	45	44	0.498
T 29628	T 44315	Tr. 24 x 5	50	48	0.670
T 29629	T 44316	Tr. 26 x 5	50	52	0.690
T 29630	T 44317	Tr. 28 x 5	60	56	1.134
T 29631	T 44318	Tr. 30 x 6	60	60	1.182
T 29632	T 44319	Tr. 32 x 6	60	64	1.202
T 29633	T 44320	Tr. 36 x 6	75	72	2.252
T 29634	T 44321	Tr. 40 x 7	80	80	2.794
T 29635	T 44322	Tr. 44 x 7	80	88	2.872
T 29636	T 44323	Tr. 48 x 8	90	96	3.984
T 29637	T 44324	Tr. 50 x 8	90	100	4.120
T 29638	T 44325	Tr. 60 x 9	100	120	5.678
T 29639	T 44326	Tr. 70 x 10	110	140	8.205

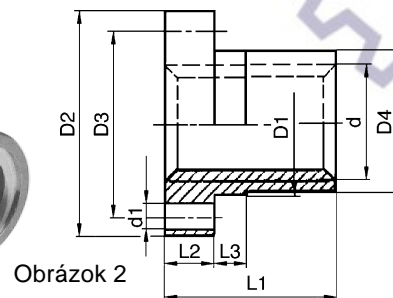
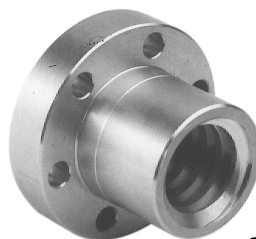
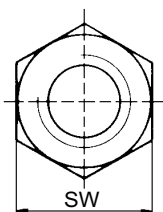
# Trapézová matica

DIN 103

vi .nižšie



Obrázok 1



Obrázok 2

## 6 hranná, tolerancia 7H Automatová oce

Pravá Obj. číslo	avá Obj. číslo	Závit d x P	SW	L = 1.5 x d	kg
T 29657	T 44370	Tr. 10 x 2	17	15	0.022
T 29659	T 44371	Tr. 10 x 3	17	15	0.022
T 29660	T 44372	Tr. 12 x 3	19	18	0.033
T 29661	T 44373	Tr. 14 x 4	22	21	0.056
T 29662	T 44374	Tr. 16 x 4	27	24	0.090
T 29663	T 44375	Tr. 18 x 4	27	27	0.095
T 29664	T 44376	Tr. 20 x 4	30	30	0.123
T 29665	T 44377	Tr. 22 x 5	30	33	0.135
T 29666	T 44378	Tr. 24 x 5	36	36	0.213
T 29667	T 44379	Tr. 26 x 5	36	39	0.225
T 29668	T 44380	Tr. 28 x 5	41	42	0.310
T 29669	T 44381	Tr. 30 x 6	46	45	0.447
T 29670	T 44382	Tr. 32 x 6	46	48	0.455
T 29671	T 44383	Tr. 36 x 6	55	54	0.752
T 29672	T 44384	Tr. 40 x 7	65	60	1.250
T 29673	T 44385	Tr. 44 x 7	65	66	1.320
T 29674	T 44386	Tr. 48 x 8	75	72	1.820
T 29675	T 44387	Tr. 50 x 8	75	75	1.895
T 29676	T 44388	Tr. 60 x 9	90	90	3.285
T 29677	T 44389	Tr. 70 x 10	90	105	3.390

## s prírubou, tolerancia 7H Bronz Rg 7

Pravá Obj. číslo	avá Obj. číslo	Závit d x P	D1 h9	D2	D3	D4 -0.2 / -0.3	d1	Závit	L1	L2	L3
T 44327	T 44347	Tr. 10 x 2	25	42	34	25	5	M 4	25	10	8
T 44328	T 44348	Tr. 10 x 3	25	42	34	25	5	M 4	25	10	6
T 44329	T 44349	Tr. 12 x 3	28	48	38	28	6	M 5	35	12	8
T 44330	T 44350	Tr. 14 x 4	28	48	38	28	6	M 5	35	12	8
T 44331	T 44351	Tr. 16 x 4	28	48	38	28	6	M 5	35	12	8
T 44332	T 44352	Tr. 18 x 4	28	48	38	28	6	M 5	35	12	8
T 44333	T 44353	Tr. 20 x 4	32	55	45	32	7	M 6	44	12	8
T 44334	T 44354	Tr. 22 x 5	32	55	45	32	7	M 6	44	12	8
T 44335	T 44355	Tr. 24 x 5	32	55	45	32	7	M 6	44	12	8
T 44336	T 44357	Tr. 26 x 5	38	62	50	38	7	M 6	46	14	8
T 44337	T 44358	Tr. 28 x 5	38	62	50	38	7	M 6	46	14	8
T 44338	T 44360	Tr. 30 x 6	38	62	50	38	7	M 6	46	14	8
T 44339	T 44361	Tr. 32 x 6	45	70	58	45	7	M 6	54	16	10
T 44340	T 44363	Tr. 36 x 6	45	70	58	45	7	M 6	54	16	10
T 44341	T 44365	Tr. 40 x 7	63	95	78	63	9	M 8	66	16	12
T 44342	T 44366	Tr. 44 x 7	63	95	78	63	9	M 8	66	16	12
T 44343	T 44367	Tr. 48 x 8	72	110	90	72	11	M 10	75	18	14
T 44344	T 44368	Tr. 50 x 8	72	110	90	72	11	M 10	75	18	14
T 44345	T 44369	Tr. 60 x 9	88	130	110	88	13	M 12	90	20	16