

Re azové kolesá



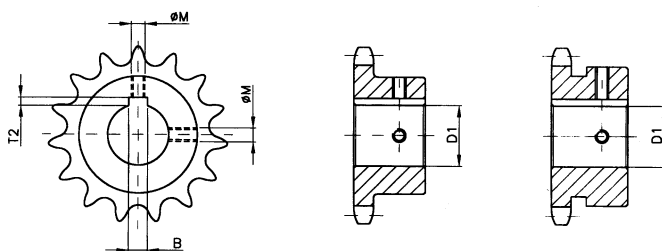
Ulme

Re azové kolesá s otvorom, drážkou a skrutkou



Výhody:

1. Induk ne kalené zuby (HRC50)
2. Diera v tolerancii H7
3. Drážka pre pero
4. Dva otvory pre zais ovacie skrutky
5. Umož ujú okamžitú montáž

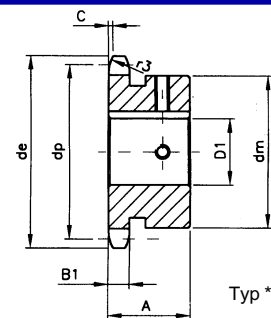
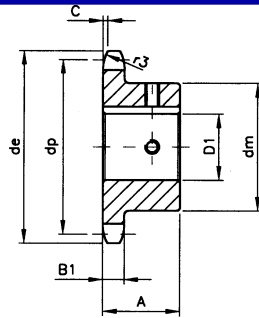


Diera D1			Šírka drážky B			H bka drážky T2		Závit ØM
Ø 10	H7	+0.015 -0	3	H9	+0.025 -0	1.4	+0.10 -0	M4
Ø 12	H7	+0.018 -0	4	H9	+0.030 -0	1.8	+0.10 -0	M4
Ø 14	H7	+0.018 -0	5	H9	+0.030 -0	2.3	+0.10 -0	M4
Ø 15	H7	+0.018 -0	5	H9	+0.030 -0	2.3	+0.10 -0	M4
Ø 16	H7	+0.018 -0	5	H9	+0.030 -0	2.3	+0.10 -0	M4
Ø 18	H7	+0.018 -0	6	H9	+0.030 -0	2.8	+0.10 -0	M5
Ø 19	H7	+0.021 -0	6	H9	+0.030 -0	2.8	+0.10 -0	M5
Ø 20	H7	+0.021 -0	6	H9	+0.030 -0	2.8	+0.10 -0	M5
Ø 22	H7	+0.021 -0	6	H9	+0.030 -0	2.8	+0.10 -0	M5
Ø 24	H7	+0.021 -0	8	H9	+0.036 -0	3.3	+0.20 -0	M6
Ø 25	H7	+0.021 -0	8	H9	+0.036 -0	3.3	+0.20 -0	M6
Ø 28	H7	+0.021 -0	8	H9	+0.036 -0	3.3	+0.20 -0	M6
Ø 30	H7	+0.021 -0	8	H9	+0.036 -0	3.3	+0.20 -0	M6
Ø 32	H7	+0.025 -0	10	H9	+0.036 -0	3.3	+0.20 -0	M8
Ø 35	H7	+0.025 -0	10	H9	+0.036 -0	3.3	+0.20 -0	M8
Ø 38	H7	+0.025 -0	10	H9	+0.036 -0	3.3	+0.20 -0	M8
Ø 40	H7	+0.025 -0	12	H9	+0.043 -0	3.3	+0.20 -0	M10
Ø 42	H7	+0.025 -0	12	H9	+0.043 -0	3.3	+0.20 -0	M10
Ø 45	H7	+0.025 -0	14	H9	+0.043 -0	3.8	+0.20 -0	M12
Ø 48	H7	+0.025 -0	14	H9	+0.043 -0	3.8	+0.20 -0	M12
Ø 50	H7	+0.025 -0	14	H9	+0.043 -0	3.8	+0.20 -0	M12

Re azové koleso 3/8" x 7/32" (06B-1)

s otvorom, drážkou a skrutkou

Oce C 43



Obj. číslo	zubov	D1	de	dp	dm	A
T 74899	10	10 [^]	34.5	30.82	24*	20
T 74900	10	12	34.5	30.82	26*	20
T 74901	10	14	34.5	30.82	29*	20
T 74902	11	10 [^]	37.5	33.80	24*	25
T 74903	11	12	37.5	33.80	26*	25
T 74904	11	14	37.5	33.80	29*	25
T 74905	11	15	37.5	33.80	30*	25
T 74906	11	16	37.5	33.80	31*	25
T 74907	12	10 [^]	40.5	36.80	25	25
T 74908	12	12	40.5	36.80	26*	25
T 74909	12	14	40.5	36.80	29*	25
T 74910	12	15	40.5	36.80	30*	25
T 74911	12	16	40.5	36.80	31*	25
T 72278	13	10 [^]	43.5	39.80	28	25
T 72436	13	12	43.5	39.80	28	25
T 74912	13	14	43.5	39.80	28	25
T 72437	13	15	43.5	39.80	28	25
T 74913	13	16	43.5	39.80	31*	25
T 74914	13	18	43.5	39.80	34*	25
T 72438	14	10 [^]	46.5	42.80	31	25
T 72439	14	12	46.5	42.80	31	25
T 74915	14	14	46.5	42.80	31	25
T 72440	14	15	46.5	42.80	31	25
T 74916	14	16	46.5	42.80	31	25
T 74917	14	18	46.5	42.80	31	25
T 74918	14	19	46.5	42.80	35*	25
T 74919	15	12	49.5	45.81	34	25
T 74920	15	14	49.5	45.81	34	25
T 72441	15	15	49.5	45.81	34	25
T 74921	15	16	49.5	45.81	34	25
T 74922	15	18	49.5	45.81	34	25
T 72442	15	19	49.5	45.81	34	25
T 72443	15	20	49.5	45.81	34	25
T 74923	15	22	49.5	45.81	42*	25
T 74924	15	24	49.5	45.81	42*	25
T 74925	15	25	49.5	45.81	42*	25
T 74926	16	12	52.5	48.82	37	28
T 74927	16	14	52.5	48.82	37	28
T 72444	16	15	52.5	48.82	37	28
T 74928	16	16	52.5	48.82	37	28
T 74929	16	18	52.5	48.82	37	28
T 72445	16	19	52.5	48.82	37	28
T 72446	16	20	52.5	48.82	37	28
T 74930	16	22	52.5	48.82	42*	28

B1	r3	c
5.3	10	1

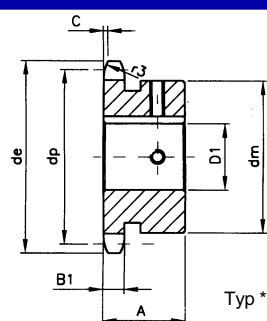
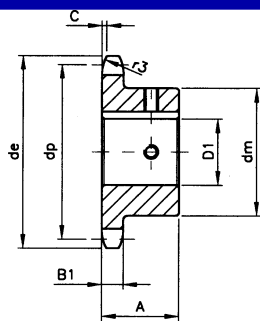
Poznámka:

[^] s nábojom a jedným otvorom pre skrutku (pod uhlom 90° k drážke pre pero)

Re azové koleso 3/8" x 7/32" (06B-1)

s otvorom, drážkou a skrutkou

Oce C 43



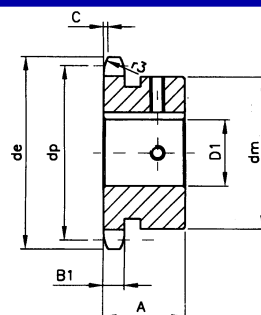
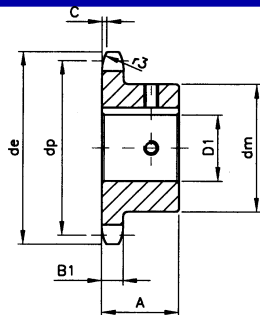
Obj. číslo	zubov	D1	de	dp	dm	A
T 74931	16	24	52.5	48.82	42*	28
T 74932	16	25	52.5	48.82	42*	28
T 74933	17	12	55.5	51.83	40	28
T 74934	17	14	55.5	51.83	40	28
T 72447	17	15	55.5	51.83	40	28
T 74935	17	16	55.5	51.83	40	28
T 74936	17	18	55.5	51.83	40	28
T 72448	17	19	55.5	51.83	40	28
T 72449	17	20	55.5	51.83	40	28
T 74937	17	22	55.5	51.83	40	28
T 74938	17	24	55.5	51.83	46*	28
T 74939	17	25	55.5	51.83	46*	28
T 74940	18	12	58.6	54.85	40	28
T 74941	18	14	58.6	54.85	40	28
T 72450	18	15	58.6	54.85	43	28
T 74942	18	16	58.6	54.85	43	28
T 74943	18	18	58.6	54.85	43	28
T 72451	18	19	58.6	54.85	43	28
T 72452	18	20	58.6	54.85	43	28
T 74944	18	22	58.6	54.85	43	28
T 72453	18	24	58.6	54.85	43	28
T 72454	18	25	58.6	54.85	43	28
T 74945	19	12	61.6	57.87	40	28
T 74946	19	14	61.6	57.87	40	28
T 72455	19	15	61.6	57.87	45	28
T 74947	19	16	61.6	57.87	45	28
T 74948	19	18	61.6	57.87	45	28
T 72456	19	19	61.6	57.87	45	28
T 72457	19	20	61.6	57.87	45	28
T 74949	19	22	61.6	57.87	45	28
T 72458	19	24	61.6	57.87	45	28
T 72459	19	25	61.6	57.87	45	28
T 74950	20	12	64.6	60.89	40	28
T 74951	20	14	64.6	60.89	40	28
T 72460	20	15	64.6	60.89	46	28
T 74952	20	16	64.6	60.89	46	28
T 74953	20	18	64.6	60.89	46	28
T 72461	20	19	64.6	60.89	46	28
T 72462	20	20	64.6	60.89	46	28
T 74954	20	22	64.6	60.89	46	28
T 72463	20	24	64.6	60.89	46	28
T 72464	20	25	64.6	60.89	46	28
T 72465	21	15	67.6	63.91	48	28
T 74955	21	16	67.6	63.91	48	28

B1	r3	c
5.3	10	1

Re azové koleso 3/8" x 7/32" (06B-1)

s otvorom, drážkou a skrutkou

Oce C 43



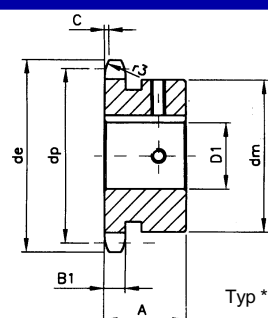
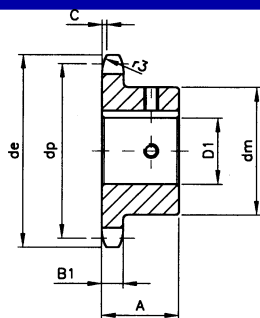
Obj. číslo	zubov	D1	de	dp	dm	A
T 74956	21	18	67.6	63.91	48	28
T 72466	21	19	67.6	63.91	48	28
T 72467	21	20	67.6	63.91	48	28
T 74957	21	22	67.6	63.91	48	28
T 72468	21	24	67.6	63.91	48	28
T 72469	21	25	67.6	63.91	48	28
T 72470	22	15	70.6	66.93	50	28
T 74958	22	16	70.6	66.93	50	28
T 74959	22	18	70.6	66.93	50	28
T 72471	22	19	70.6	66.93	50	28
T 72472	22	20	70.6	66.93	50	28
T 74960	22	22	70.6	66.93	50	28
T 72473	22	24	70.6	66.93	50	28
T 72474	22	25	70.6	66.93	50	28
T 72475	23	15	73.7	69.95	52	28
T 74961	23	16	73.7	69.95	52	28
T 74962	23	18	73.7	69.95	52	28
T 72476	23	19	73.7	69.95	52	28
T 72477	23	20	73.7	69.95	52	28
T 74963	23	22	73.7	69.95	52	28
T 72478	23	24	73.7	69.95	52	28
T 72479	23	25	73.7	69.95	52	28
T 74964	24	16	76.7	72.97	50	28
T 74965	24	18	76.7	72.97	50	28
T 74966	24	19	76.7	72.97	54	28
T 72480	24	20	76.7	72.97	54	28
T 74967	24	22	76.7	72.97	54	28
T 72481	24	24	76.7	72.97	54	28
T 72482	24	25	76.7	72.97	54	28
T 72483	24	28	76.7	72.97	54	28
T 72484	24	30	76.7	72.97	54	28
T 74968	25	16	79.7	76.00	50	28
T 74969	25	18	79.7	76.00	50	28
T 74970	25	19	79.7	76.00	50	28
T 72485	25	20	79.7	76.00	57	28
T 74971	25	22	79.7	76.00	57	28
T 72486	25	24	79.7	76.00	57	28
T 72487	25	25	79.7	76.00	57	28
T 72488	25	28	79.7	76.00	57	28
T 72489	25	30	79.7	76.00	57	28
T 72490	30	20	94.8	91.12	60	30
T 74972	30	22	94.8	91.12	60	30
T 72491	30	24	94.8	91.12	60	30
T 72492	30	25	94.8	91.12	60	30
T 72493	30	28	94.8	91.12	60	30
T 72494	30	30	94.8	91.12	60	30

B1	r3	c
5.3	10	1

Re azové koleso 1/2" x 5/16" (08B-1)

s otvorom, drážkou a skrutkou

Oce C 43



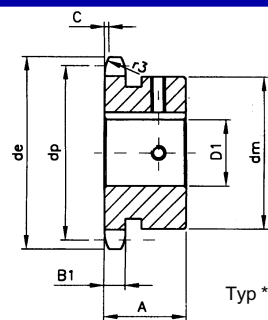
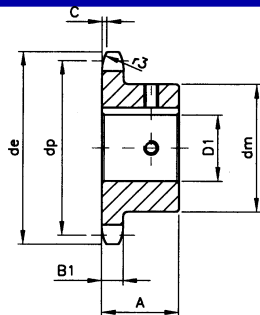
Obj. číslo	zubov	D1	de	dp	dm	A
T 74973	10	12	45.9	41.10	26	25
T 74974	10	14	45.9	41.10	26	25
T 74975	10	15	45.9	41.10	31*	25
T 74976	10	16	45.9	41.10	31*	25
T 74977	11	12	49.9	45.07	29	25
T 74978	11	14	49.9	45.07	29	25
T 74979	11	15	49.9	45.07	31*	25
T 74980	11	16	49.9	45.07	31*	25
T 74981	11	18	49.9	45.07	37*	25
T 74982	11	19	49.9	45.07	37*	25
T 74983	12	12	53.9	49.07	33	28
T 74984	12	14	53.9	49.07	33	28
T 72495	12	15	53.9	49.07	33	28
T 74985	12	16	53.9	49.07	33	28
T 74986	12	18	53.9	49.07	33	28
T 72498	12	19	53.9	49.07	33	28
T 72499	12	20	53.9	49.07	33	28
T 74987	12	22	53.9	49.07	40*	28
T 74988	12	24	53.9	49.07	41*	28
T 74989	12	25	53.9	49.07	42*	28
T 74991	13	12	57.9	53.06	37	28
T 74992	13	14	57.9	53.06	37	28
T 72500	13	15	57.9	53.06	37	28
T 74993	13	16	57.9	53.06	37	28
T 74994	13	18	57.9	53.06	37	28
T 72501	13	19	57.9	53.06	37	28
T 72502	13	20	57.9	53.06	37	28
T 74995	13	22	57.9	53.06	37	28
T 74996	13	24	57.9	53.06	42*	28
T 74997	13	25	57.9	53.06	42*	28
T 74998	13	28	57.9	53.06	45*	28
T 74999	14	12	61.9	57.07	33	25
T 75000	14	14	61.9	57.07	33	25
T 72503	14	15	61.9	57.07	41	25
T 75001	14	16	61.9	57.07	41	25
T 75002	14	18	61.9	57.07	41	25
T 72504	14	19	61.9	57.07	41	25
T 72505	14	20	61.9	57.07	41	25
T 75003	14	22	61.9	57.07	41	28
T 75004	14	24	61.9	57.07	41	28
T 75005	14	25	61.9	57.07	41	28
T 75006	14	28	61.9	57.07	48*	28
T 75007	15	12	65.9	61.09	33	28
T 75008	15	14	65.9	61.09	33	28

B1	r3	c
7.2	13	1.3

Re azové koleso 1/2" x 5/16" (08B-1)

s otvorom, drážkou a skrutkou

Oce C 43



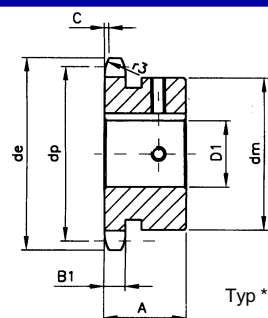
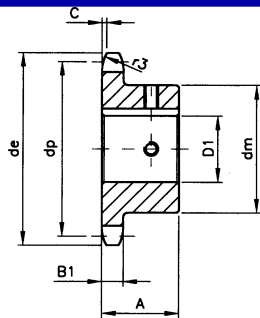
Obj. číslo	zubov	D1	de	dp	dm	A
T 72506	15	15	65.9	61.09	45	28
T 75009	15	16	65.9	61.09	45	28
T 75010	15	18	65.9	61.09	45	28
T 72507	15	19	65.9	61.09	45	28
T 72508	15	20	65.9	61.09	45	28
T 75011	15	22	65.9	61.09	45	28
T 72509	15	24	65.9	61.09	45	28
T 72510	15	25	65.9	61.09	45	28
T 75012	15	28	65.9	61.09	45	28
T 75013	15	30	65.9	61.09	52*	28
T 75014	15	32	65.9	61.09	52*	28
T 72511	16	15	69.9	65.10	50	28
T 75015	16	16	69.9	65.10	50	28
T 75016	16	18	69.9	65.10	50	28
T 72512	16	19	69.9	65.10	50	28
T 72513	16	20	69.9	65.10	50	28
T 75017	16	22	69.9	65.10	50	28
T 72514	16	24	69.9	65.10	50	28
T 72515	16	25	69.9	65.10	50	28
T 75018	16	28	69.9	65.10	50	28
T 75019	16	30	69.9	65.10	50	28
T 75020	16	32	69.9	65.10	57*	28
T 72516	17	15	74.0	69.11	52	28
T 75021	17	16	74.0	69.11	52	28
T 75022	17	18	74.0	69.11	52	28
T 72517	17	19	74.0	69.11	52	28
T 72518	17	20	74.0	69.11	52	28
T 75023	17	22	74.0	69.11	52	28
T 72519	17	24	74.0	69.11	52	28
T 72520	17	25	74.0	69.11	52	28
T 75024	17	28	74.0	69.11	52	28
T 75025	17	30	74.0	69.11	52	28
T 75026	17	32	74.0	69.11	52	28
T 75027	18	16	78.0	73.14	52	28
T 75028	18	18	78.0	73.14	52	28
T 75029	18	19	78.0	73.14	52	28
T 72521	18	20	78.0	73.14	56	28
T 75030	18	22	78.0	73.14	56	28
T 72522	18	24	78.0	73.14	56	28
T 72523	18	25	78.0	73.14	56	28
T 72524	18	28	78.0	73.14	56	28
T 72525	18	30	78.0	73.14	56	28
T 75031	18	32	78.0	73.14	56	28
T 75032	18	35	78.0	73.14	56	28

B1	r3	c
7.2	13	1.3

Re azové koleso 1/2" x 5/16" (08B-1)

s otvorom, drážkou a skrutkou

Oce C 43



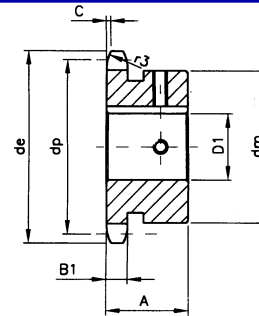
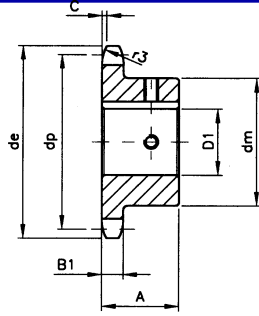
Obj. číslo	zubov	D1	de	dp	dm	A
T 75033	18	38	78.0	73.14	56	28
T 75034	19	16	82.0	77.16	52	28
T 75035	19	18	82.0	77.16	52	28
T 75036	19	19	82.0	77.16	52	28
T 72526	19	20	82.0	77.16	60	28
T 75037	19	22	82.0	77.16	60	28
T 72527	19	24	82.0	77.16	60	28
T 72528	19	25	82.0	77.16	60	28
T 72529	19	28	82.0	77.16	60	28
T 72530	19	30	82.0	77.16	60	28
T 75038	19	32	82.0	77.16	60	28
T 75039	19	35	82.0	77.16	60	28
T 75040	19	38	82.0	77.16	60	28
T 75041	20	16	86.0	81.19	55	28
T 75042	20	18	86.0	81.19	55	28
T 75043	20	19	86.0	81.19	55	28
T 72531	20	20	86.0	81.19	64	28
T 75044	20	22	86.0	81.19	64	28
T 72532	20	24	86.0	81.19	64	28
T 72533	20	25	86.0	81.19	64	28
T 72534	20	28	86.0	81.19	64	28
T 72535	20	30	86.0	81.19	64	28
T 75045	20	32	86.0	81.19	64	28
T 75046	20	35	86.0	81.19	64	28
T 75047	20	38	86.0	81.19	64	28
T 75048	21	16	90.1	85.22	55	28
T 75049	21	18	90.1	85.22	55	28
T 75050	21	19	90.1	85.22	55	28
T 72536	21	20	90.1	85.22	60	28
T 75051	21	22	90.1	85.22	60	28
T 72537	21	24	90.1	85.22	68	28
T 72538	21	25	90.1	85.22	68	28
T 72539	21	28	90.1	85.22	68	28
T 72540	21	30	90.1	85.22	68	28
T 75052	21	32	90.1	85.22	68	28
T 75053	21	35	90.1	85.22	68	28
T 75054	21	38	90.1	85.22	68	28
T 75055	22	16	94.1	89.24	55	28
T 75056	22	18	94.1	89.24	55	28
T 75057	22	19	94.1	89.24	55	28
T 72541	22	20	94.1	89.24	65	28
T 75058	22	22	94.1	89.24	65	28
T 72542	22	24	94.1	89.24	70	28
T 72543	22	25	94.1	89.24	70	28

B1	r3	c
7.2	13	1.3

Re azové koleso 1/2" x 5/16" (08B-1)

s otvorom, drážkou a skrutkou

Oce C 43



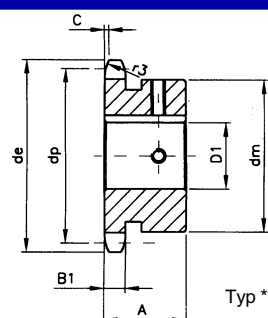
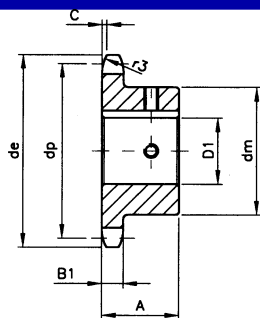
Obj. číslo	zubov	D1	de	dp	dm	A
T 72544	22	28	94.1	89.24	70	28
T 72545	22	30	94.1	89.24	70	28
T 75059	22	32	94.1	89.24	70	28
T 75060	22	35	94.1	89.24	70	28
T 75061	22	38	94.1	89.24	70	28
T 75062	23	19	98.1	93.27	65	28
T 75063	23	20	98.1	93.27	65	28
T 75064	23	22	98.1	93.27	70	28
T 72547	23	24	98.1	93.27	70	28
T 72548	23	25	98.1	93.27	70	28
T 72549	23	28	98.1	93.27	70	28
T 72550	23	30	98.1	93.27	70	28
T 75065	23	32	98.1	93.27	70	28
T 75066	23	35	98.1	93.27	70	28
T 75067	23	38	98.1	93.27	70	28
T 75068	24	19	102.1	97.29	65	28
T 72551	24	20	102.1	97.29	65	28
T 75069	24	22	102.1	97.29	70	28
T 72552	24	24	102.1	97.29	70	28
T 72553	24	25	102.1	97.29	70	28
T 72554	24	28	102.1	97.29	70	28
T 72555	24	30	102.1	97.29	70	28
T 75070	24	32	102.1	97.29	70	28
T 75071	24	35	102.1	97.29	70	28
T 75072	24	38	102.1	97.29	70	28
T 75073	25	19	106.2	101.33	65	28
T 72556	25	20	106.2	101.33	65	28
T 75074	25	22	106.2	101.33	70	28
T 72557	25	24	106.2	101.33	70	28
T 72558	25	25	106.2	101.33	70	28
T 72559	25	28	106.2	101.33	70	28
T 72560	25	30	106.2	101.33	70	28
T 75075	25	32	106.2	101.33	70	28
T 75076	25	35	106.2	101.33	70	28
T 75077	25	38	106.2	101.33	70	28
T 72561	30	25	126.3	121.50	75	30
T 72562	30	28	126.3	121.50	75	30
T 72563	30	30	126.3	121.50	80	30
T 75078	30	32	126.3	121.50	80	30
T 75079	30	35	126.3	121.50	80	30
T 75080	30	38	126.3	121.50	80	30

B1	r3	c
7.2	13	1.3

Re azové koleso 5/8" x 3/8" (10B-1)

s otvorom, drážkou a skrutkou

Oce C 43



Obj. číslo	zubov	D1	de	dp	dm	A
T 75081	10	15	58.3	51.37	35	25
T 75082	10	16	58.3	51.37	35	25
T 75083	10	18	58.3	51.37	35	25
T 75084	10	19	58.3	51.37	35	25
T 75085	10	20	58.3	51.37	35	25
T 75086	10	24	58.3	51.37	42*	25
T 75087	11	15	63.2	56.34	37	30
T 75088	11	16	63.2	56.34	37	30
T 75089	11	18	63.2	56.34	37	30
T 75090	11	19	63.2	56.34	37	30
T 75091	11	20	63.2	56.34	37	30
T 75092	11	24	63.2	56.34	47*	30
T 75093	11	25	63.2	56.34	47*	30
T 75094	11	28	63.2	56.34	47*	30
T 72564	12	15	68.2	61.34	42	30
T 75095	12	16	68.2	61.34	42	30
T 75096	12	18	68.2	61.34	42	30
T 72565	12	19	68.2	61.34	42	30
T 72566	12	20	68.2	61.34	42	30
T 75097	12	22	68.2	61.34	42	30
T 72567	12	24	68.2	61.34	42	30
T 72568	12	25	68.2	61.34	42	30
T 75099	12	28	68.2	61.34	51*	30
T 75100	12	30	68.2	61.34	51*	30
T 75101	12	32	68.2	61.34	55*	30
T 72569	13	15	73.2	66.32	47	30
T 75102	13	16	73.2	66.32	47	30
T 75103	13	18	73.2	66.32	47	30
T 72570	13	19	73.2	66.32	47	30
T 72571	13	20	73.2	66.32	47	30
T 75104	13	22	73.2	66.32	47	30
T 72572	13	24	73.2	66.32	47	30
T 72573	13	25	73.2	66.32	47	30
T 75105	13	28	73.2	66.32	47	30
T 75106	13	30	73.2	66.32	47	30
T 75107	13	32	73.2	66.32	57*	30
T 72574	14	15	78.2	71.34	52	30
T 75108	14	16	78.2	71.34	52	30
T 75109	14	18	78.2	71.34	52	30
T 72575	14	19	78.2	71.34	52	30
T 72576	14	20	78.2	71.34	52	30
T 75110	14	22	78.2	71.34	52	30
T 72577	14	24	78.2	71.34	52	30
T 72578	14	25	78.2	71.34	52	30

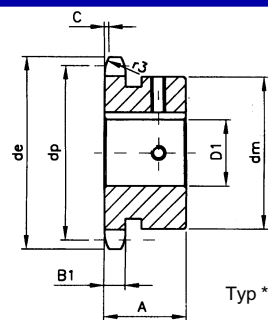
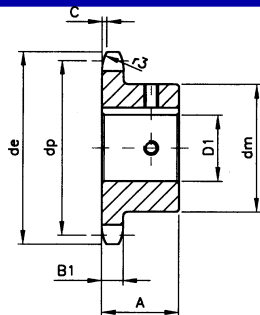
B1	r3	c
9.1	16	1.6

Rozměry uvedeny v mm.

Re azové koleso 5/8" x 3/8" (10B-1)

s otvorom, drážkou a skrutkou

Oce C 43



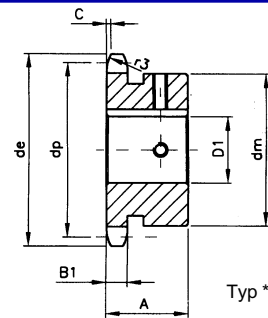
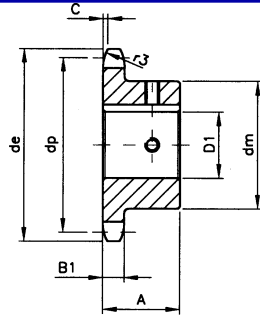
Obj. číslo	zubov	D1	de	dp	dm	A
T 75111	14	28	78.2	71.34	52	30
T 75112	14	30	78.2	71.34	52	30
T 75113	14	32	78.2	71.34	52	30
T 75114	15	19	83.2	76.36	57	30
T 72579	15	20	83.2	76.36	57	30
T 75115	15	22	83.2	76.36	57	30
T 72580	15	24	83.2	76.36	57	30
T 72581	15	25	83.2	76.36	57	30
T 72582	15	28	83.2	76.36	57	30
T 72583	15	30	83.2	76.36	57	30
T 75116	15	32	83.2	76.36	57	30
T 75117	15	35	83.2	76.36	57	30
T 75118	16	19	88.3	81.37	60	30
T 72584	16	20	88.3	81.37	60	30
T 75119	16	22	88.3	81.37	60	30
T 72585	16	24	88.3	81.37	60	30
T 72586	16	25	88.3	81.37	60	30
T 72587	16	28	88.3	81.37	60	30
T 72588	16	30	88.3	81.37	60	30
T 75120	16	32	88.3	81.37	60	30
T 75121	16	35	88.3	81.37	60	30
T 75122	16	38	88.3	81.37	60	30
T 75123	17	19	93.3	86.39	60	30
T 72589	17	20	93.3	86.39	60	30
T 75124	17	22	93.3	86.39	60	30
T 72590	17	24	93.3	86.39	60	30
T 72591	17	25	93.3	86.39	60	30
T 72592	17	28	93.3	86.39	60	30
T 72593	17	30	93.3	86.39	60	30
T 75125	17	32	93.3	86.39	60	30
T 75126	17	35	93.3	86.39	60	30
T 75127	17	38	93.3	86.39	60	30
T 75128	18	19	98.3	91.42	60	30
T 72594	18	20	98.3	91.42	60	30
T 75129	18	22	98.3	91.42	70	30
T 72595	18	24	98.3	91.42	70	30
T 72596	18	25	98.3	91.42	70	30
T 72597	18	28	98.3	91.42	70	30
T 72598	18	30	98.3	91.42	70	30
T 75130	18	32	98.3	91.42	70	30
T 75131	18	35	98.3	91.42	70	30
T 75132	18	38	98.3	91.42	70	30
T 75133	18	40	98.3	91.42	70	30
T 75134	18	42	98.3	91.42	70	30

B1	r3	c
9.1	16	1.6

Re azové koleso 5/8" x 3/8" (10B-1)

s otvorom, drážkou a skrutkou

Oce C 43



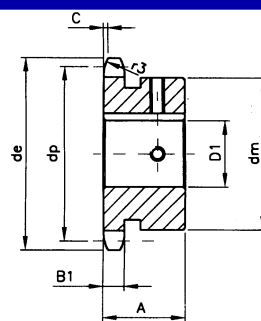
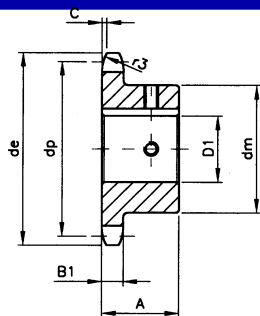
Obj. číslo	zubov	D1	de	dp	dm	A
T 75135	19	19	103.3	96.45	60	30
T 72599	19	20	103.3	96.45	60	30
T 75136	19	22	103.3	96.45	70	30
T 72600	19	24	103.3	96.45	70	30
T 72601	19	25	103.3	96.45	70	30
T 72602	19	28	103.3	96.45	70	30
T 72603	19	30	103.3	96.45	70	30
T 75137	19	32	103.3	96.45	70	30
T 75138	19	35	103.3	96.45	70	30
T 75139	19	38	103.3	96.45	70	30
T 75140	19	40	103.3	96.45	70	30
T 75141	19	42	103.3	96.45	70	30
T 75142	20	19	108.4	101.49	65	30
T 72604	20	20	108.4	101.49	65	30
T 75143	20	22	108.4	101.49	65	30
T 72605	20	24	108.4	101.49	70	30
T 72606	20	25	108.4	101.49	70	30
T 72607	20	28	108.4	101.49	75	30
T 72608	20	30	108.4	101.49	75	30
T 75144	20	32	108.4	101.49	75	30
T 75145	20	35	108.4	101.49	75	30
T 75146	20	38	108.4	101.49	75	30
T 75147	20	40	108.4	101.49	75	30
T 75148	20	42	108.4	101.49	75	30
T 75149	21	19	113.4	106.52	65	30
T 72609	21	20	113.4	106.52	65	30
T 75150	21	22	113.4	106.52	65	30
T 72610	21	24	113.4	106.52	70	30
T 72611	21	25	113.4	106.52	70	30
T 72612	21	28	113.4	106.52	75	30
T 72613	21	30	113.4	106.52	75	30
T 75151	21	32	113.4	106.52	75	30
T 75152	21	35	113.4	106.52	75	30
T 75153	21	38	113.4	106.52	75	30
T 75154	21	40	113.4	106.52	75	30
T 75155	21	42	113.4	106.52	75	30
T 75156	22	19	118.4	111.55	65	30
T 72614	22	20	118.4	111.55	65	30
T 75157	22	22	118.4	111.55	65	30
T 72615	22	24	118.4	111.55	70	30
T 72616	22	25	118.4	111.55	70	30
T 72617	22	28	118.4	111.55	80	30
T 72618	22	30	118.4	111.55	80	30
T 75158	22	32	118.4	111.55	80	30

B1	r3	c
9.1	16	1.6

Re azové koleso 5/8" x 3/8" (10B-1)

s otvorom, drážkou a skrutkou

Oce C 43



Obj. číslo	zubov	D1	de	dp	dm	A
T 75159	22	35	118.4	111.55	80	30
T 75160	22	38	118.4	111.55	80	30
T 75161	22	40	118.4	111.55	80	30
T 75162	22	42	118.4	111.55	80	30
T 75163	23	19	123.5	116.58	65	30
T 75164	23	20	123.5	116.58	65	30
T 75165	23	22	123.5	116.58	65	30
T 75166	23	24	123.5	116.58	70	30
T 72619	23	25	123.5	116.58	70	30
T 72620	23	28	123.5	116.58	80	30
T 72621	23	30	123.5	116.58	80	30
T 72622	23	32	123.5	116.58	80	30
T 72623	23	35	123.5	116.58	80	30
T 72624	23	38	123.5	116.58	80	30
T 75167	23	40	123.5	116.58	80	30
T 75168	23	42	123.5	116.58	80	30
T 75169	24	19	128.5	121.62	65	30
T 75170	24	20	128.5	121.62	65	30
T 75171	24	22	128.5	121.62	65	30
T 75172	24	24	128.5	121.62	70	30
T 72625	24	25	128.5	121.62	70	30
T 72626	24	28	128.5	121.62	80	30
T 72627	24	30	128.5	121.62	80	30
T 72628	24	32	128.5	121.62	80	30
T 72629	24	35	128.5	121.62	80	30
T 72630	24	38	128.5	121.62	80	30
T 75173	24	40	128.5	121.62	80	30
T 75174	24	42	128.5	121.62	80	30
T 75175	25	19	133.6	126.66	65	30
T 75176	25	20	133.6	126.66	65	30
T 75177	25	22	133.6	126.66	65	30
T 75178	25	24	133.6	126.66	70	30
T 72631	25	25	133.6	126.66	70	30
T 72632	25	28	133.6	126.66	80	30
T 72633	25	30	133.6	126.66	80	30
T 72634	25	32	133.6	126.66	80	30
T 72635	25	35	133.6	126.66	80	30
T 72636	25	38	133.6	126.66	80	30
T 75179	25	40	133.6	126.66	80	30
T 75180	25	42	133.6	126.66	80	30

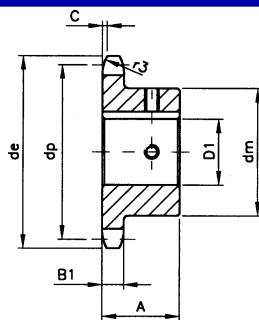
B1	r3	c
9.1	16	1.6

Rozměry uvedeny v mm.

Re azové koleso 3/4" x 7/16" (12B-1)

s otvorom, drážkou a skrutkou

Oce C 43



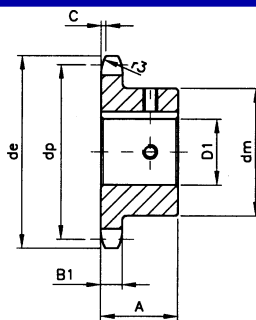
Obj. číslo	zubov	D1	de	dp	dm	A
T 75181	10	19	69.8	61.64	42	30
T 75182	10	20	69.8	61.64	42	30
T 75183	10	24	69.8	61.64	42	30
T 75184	10	25	69.8	61.64	42	30
T 75185	11	19	75.8	67.61	46	35
T 75186	11	20	75.8	67.61	46	35
T 75187	11	24	75.8	67.61	46	35
T 75188	11	25	75.8	67.61	46	35
T 75189	12	19	81.8	73.60	52	35
T 72637	12	20	81.8	73.60	52	35
T 75190	12	22	81.8	73.60	52	35
T 72638	12	24	81.8	73.60	52	35
T 72639	12	25	81.8	73.60	52	35
T 75191	12	28	81.8	73.60	52	35
T 75192	12	30	81.8	73.60	52	35
T 75193	12	32	81.8	73.60	56	35
T 75194	12	35	81.8	73.60	56	35
T 75195	13	19	87.8	79.59	58	35
T 72640	13	20	87.8	79.59	58	35
T 75196	13	22	87.8	79.59	58	35
T 72641	13	24	87.8	79.59	58	35
T 72642	13	25	87.8	79.59	58	35
T 72643	13	28	87.8	79.59	58	35
T 72644	13	30	87.8	79.59	58	35
T 75197	13	32	87.8	79.59	58	35
T 75198	13	35	87.8	79.59	58	35
T 75199	13	38	87.8	79.59	61	35
T 75200	14	19	93.8	85.61	60	35
T 72645	14	20	93.8	85.61	60	35
T 75201	14	22	93.8	85.61	60	35
T 72646	14	24	93.8	85.61	64	35
T 72647	14	25	93.8	85.61	64	35
T 72648	14	28	93.8	85.61	64	35
T 72649	14	30	93.8	85.61	64	35
T 75202	14	32	93.8	85.61	64	35
T 75203	14	35	93.8	85.61	64	35
T 75204	14	38	93.8	85.61	64	35
T 75205	14	40	93.8	85.61	67	35
T 75206	15	19	99.8	91.63	65	35
T 72650	15	20	99.8	91.63	65	35
T 75207	15	22	99.8	91.63	65	35
T 72651	15	24	99.8	91.63	70	35
T 72652	15	25	99.8	91.63	70	35
T 72653	15	28	99.8	91.63	70	35

B1	r3	c
11.1	19	2.0

Re azové koleso 3/4" x 7/16" (12B-1)

s otvorom, drážkou a skrutkou

Oce C 43



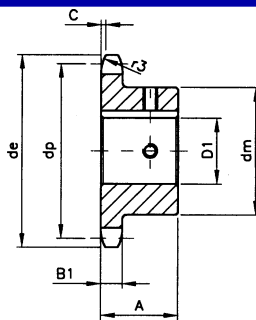
Obj. číslo	zubov	D1	de	dp	dm	A
T 72654	15	30	99.8	91.63	70	35
T 75208	15	32	99.8	91.63	70	35
T 75209	15	35	99.8	91.63	70	35
T 75210	15	38	99.8	91.63	70	35
T 75211	15	40	99.8	91.63	70	35
T 75212	16	19	105.8	97.65	65	35
T 72655	16	20	105.8	97.65	65	35
T 75213	16	22	105.8	97.65	65	35
T 72656	16	24	105.8	97.65	70	35
T 72657	16	25	105.8	97.65	70	35
T 72658	16	28	105.8	97.65	75	35
T 72659	16	30	105.8	97.65	75	35
T 75214	16	32	105.8	97.65	75	35
T 75215	16	35	105.8	97.65	75	35
T 75216	16	38	105.8	97.65	75	35
T 75217	16	40	105.8	97.65	75	35
T 72660	17	25	111.9	103.67	70	35
T 72661	17	28	111.9	103.67	80	35
T 72662	17	30	111.9	103.67	80	35
T 75218	17	32	111.9	103.67	80	35
T 72663	17	35	111.9	103.67	80	35
T 75219	17	38	111.9	103.67	80	35
T 75220	17	40	111.9	103.67	80	35
T 75221	17	42	111.9	103.67	80	35
T 72664	18	25	117.9	109.71	70	35
T 72665	18	28	117.9	109.71	80	35
T 72666	18	30	117.9	109.71	80	35
T 75222	18	32	117.9	109.71	80	35
T 72667	18	35	117.9	109.71	80	35
T 75223	18	38	117.9	109.71	80	35
T 75224	18	40	117.9	109.71	80	35
T 75225	18	42	117.9	109.71	80	35
T 72668	19	25	123.9	115.75	70	35
T 72669	19	28	123.9	115.75	80	35
T 72670	19	30	123.9	115.75	80	35
T 75226	19	32	123.9	115.75	80	35
T 72671	19	35	123.9	115.75	80	35
T 75227	19	38	123.9	115.75	80	35
T 75228	19	40	123.9	115.75	80	35
T 75229	19	42	123.9	115.75	80	35
T 75230	19	45	123.9	115.75	80	35
T 75231	19	48	123.9	115.75	80	35
T 75232	19	50	123.9	115.75	80	35

B1	r3	c
11.1	19	2.0

Re azové koleso 3/4" x 7/16" (12B-1)

s otvorom, drážkou a skrutkou

Oce C 43



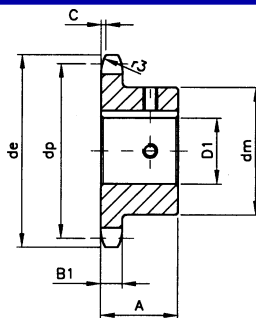
Obj. číslo	zubov	D1	de	dp	dm	A
T 72672	20	25	130.0	121.78	70	35
T 72673	20	28	130.0	121.78	80	35
T 72674	20	30	130.0	121.78	80	35
T 75233	20	32	130.0	121.78	80	35
T 72675	20	35	130.0	121.78	80	35
T 75234	20	38	130.0	121.78	80	35
T 75235	20	40	130.0	121.78	80	35
T 75236	20	42	130.0	121.78	80	35
T 75237	20	45	130.0	121.78	80	35
T 75238	20	48	130.0	121.78	80	35
T 75239	20	50	130.0	121.78	80	35
T 75240	21	25	136.0	127.82	70	40
T 72676	21	28	136.0	127.82	80	40
T 75241	21	30	136.0	127.82	80	40
T 72677	21	32	136.0	127.82	90	40
T 72678	21	35	136.0	127.82	90	40
T 72679	21	38	136.0	127.82	90	40
T 75242	21	40	136.0	127.82	90	40
T 75243	21	42	136.0	127.82	90	40
T 75244	21	45	136.0	127.82	90	40
T 75245	21	48	136.0	127.82	90	40
T 75246	21	50	136.0	127.82	90	40
T 75247	22	25	142.0	133.86	70	40
T 75248	22	28	142.0	133.86	80	40
T 72680	22	30	142.0	133.86	80	40
T 75249	22	32	142.0	133.86	80	40
T 72681	22	35	142.0	133.86	80	40
T 72682	22	38	142.0	133.86	80	40
T 72683	22	40	142.0	133.86	80	40
T 75250	22	42	142.0	133.86	90	40
T 75251	22	45	142.0	133.86	90	40
T 75252	22	48	142.0	133.86	90	40
T 75253	22	50	142.0	133.86	90	40
T 75254	23	25	148.1	139.90	70	40
T 75255	23	28	148.1	139.90	80	40
T 72684	23	30	148.1	139.90	80	40
T 75256	23	32	148.1	139.90	90	40
T 72685	23	35	148.1	139.90	90	40
T 72686	23	38	148.1	139.90	90	40
T 72687	23	40	148.1	139.90	90	40
T 75257	23	42	148.1	139.90	90	40
T 75258	23	45	148.1	139.90	90	40
T 75259	23	48	148.1	139.90	90	40
T 75260	23	50	148.1	139.90	90	40

B1	r3	c
11.1	19	2.0

Re azové koleso 3/4" x 7/16" (12B-1)

s otvorom, drážkou a skrutkou

Oce C 43



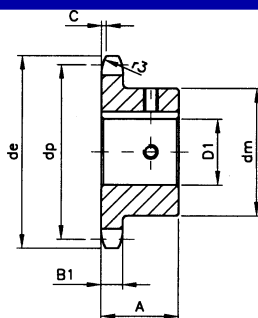
Obj. číslo	zubov	D1	de	dp	dm	A
T 75261	24	25	154.1	145.94	70	40
T 75262	24	28	154.1	145.94	80	40
T 72688	24	30	154.1	145.94	80	40
T 75264	24	32	154.1	145.94	90	40
T 72689	24	35	154.1	145.94	90	40
T 72690	24	38	154.1	145.94	90	40
T 72691	24	40	154.1	145.94	90	40
T 75265	24	42	154.1	145.94	90	40
T 75267	24	45	154.1	145.94	90	40
T 75268	24	48	154.1	145.94	90	40
T 75269	24	50	154.1	145.94	90	40
T 75270	25	25	160.2	152.00	70	40
T 75271	25	28	160.2	152.00	80	40
T 72692	25	30	160.2	152.00	80	40
T 75272	25	32	160.2	152.00	90	40
T 72693	25	35	160.2	152.00	90	40
T 72694	25	38	160.2	152.00	90	40
T 72695	25	40	160.2	152.00	90	40
T 75273	25	42	160.2	152.00	90	40
T 75274	25	45	160.2	152.00	90	40
T 75275	25	48	160.2	152.00	90	40
T 75276	25	50	160.2	152.00	90	40

B1	r3	c
11.1	19	2.0

Re azové koleso 1" x 17.02 mm (16B-1)

s otvorom, drážkou a skrutkou

Oce C 43



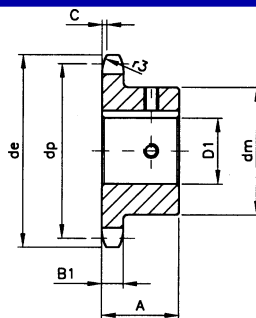
Obj. číslo	zubov	D1	de	dp	dm	A
T 75277	11	25	101.7	90.14	61	40
T 75278	11	28	101.7	90.14	61	40
T 75279	11	30	101.7	90.14	61	40
T 75280	11	32	101.7	90.14	61	40
T 75282	11	35	101.7	90.14	61	40
T 75283	11	38	101.7	90.14	65	40
T 75284	11	40	101.7	90.14	67	40
T 75285	11	42	101.7	90.14	67	40
T 72696	12	25	109.7	98.14	69	40
T 72697	12	28	109.7	98.14	69	40
T 72698	12	30	109.7	98.14	69	40
T 75286	12	32	109.7	98.14	69	40
T 75287	12	35	109.7	98.14	69	40
T 75288	12	38	109.7	98.14	69	40
T 75289	12	40	109.7	98.14	69	40
T 75290	12	42	109.7	98.14	69	40
T 72699	13	25	117.7	106.12	70	40
T 72700	13	28	117.7	106.12	78	40
T 72701	13	30	117.7	106.12	78	40
T 75291	13	32	117.7	106.12	78	40
T 75292	13	35	117.7	106.12	78	40
T 75293	13	38	117.7	106.12	78	40
T 75294	13	40	117.7	106.12	78	40
T 75295	13	42	117.7	106.12	78	40
T 75296	13	45	117.7	106.12	78	40
T 75297	13	48	117.7	106.12	78	40
T 75298	13	50	117.7	106.12	78	40
T 75299	14	25	125.7	114.15	70	40
T 75300	14	28	125.7	114.15	80	40
T 72702	14	30	125.7	114.15	80	40
T 75301	14	32	125.7	114.15	80	40
T 72703	14	35	125.7	114.15	84	40
T 72704	14	38	125.7	114.15	84	40
T 75302	14	40	125.7	114.15	84	40
T 75303	14	42	125.7	114.15	84	40
T 75304	14	45	125.7	114.15	84	40
T 75305	14	48	125.7	114.15	84	40
T 75306	14	50	125.7	114.15	84	40
T 75307	15	25	133.7	122.17	70	40
T 75308	15	28	133.7	122.17	80	40
T 72705	15	30	133.7	122.17	80	40
T 75309	15	32	133.7	122.17	80	40
T 72706	15	35	133.7	122.17	92	40
T 72707	15	38	133.7	122.17	92	40

B1	r3	c
16.2	26	2.5

Re azové koleso 1" x 17.02 mm (16B-1)

s otvorom, drážkou a skrutkou

Oce C 43



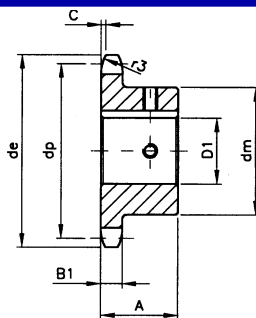
Obj. číslo	zubov	D1	de	dp	dm	A
T 72708	15	40	133.7	122.17	92	40
T 75310	15	42	133.7	122.17	92	40
T 75311	15	45	133.7	122.17	92	40
T 75312	15	48	133.7	122.17	92	40
T 75313	15	50	133.7	122.17	92	40
T 75314	16	25	141.8	130.20	80	45
T 75315	16	28	141.8	130.20	80	45
T 72709	16	30	141.8	130.20	80	45
T 75316	16	32	141.8	130.20	100	45
T 72710	16	35	141.8	130.20	100	45
T 72711	16	38	141.8	130.20	100	45
T 72712	16	40	141.8	130.20	100	45
T 75317	16	42	141.8	130.20	100	45
T 75318	16	45	141.8	130.20	100	45
T 75319	16	48	141.8	130.20	100	45
T 75320	16	50	141.8	130.20	100	45
T 75321	17	25	149.8	138.22	80	45
T 75322	17	28	149.8	138.22	80	45
T 75323	17	30	149.8	138.22	80	45
T 75324	17	32	149.8	138.22	100	45
T 72713	17	35	149.8	138.22	100	45
T 72714	17	38	149.8	138.22	100	45
T 72715	17	40	149.8	138.22	100	45
T 75325	17	42	149.8	138.22	100	45
T 72716	17	45	149.8	138.22	100	45
T 75326	17	48	149.8	138.22	100	45
T 72717	17	50	149.8	138.22	100	45
T 75327	18	25	157.8	146.28	80	45
T 75328	18	28	157.8	146.28	80	45
T 75329	18	30	157.8	146.28	80	45
T 75330	18	32	157.8	146.28	100	45
T 72718	18	35	157.8	146.28	100	45
T 72719	18	38	157.8	146.28	100	45
T 72720	18	40	157.8	146.28	100	45
T 75331	18	42	157.8	146.28	100	45
T 72721	18	45	157.8	146.28	100	45
T 75332	18	48	157.8	146.28	100	45
T 72722	18	50	157.8	146.28	100	45
T 75333	19	25	165.9	154.33	80	45
T 75334	19	28	165.9	154.33	80	45
T 75335	19	30	165.9	154.33	80	45
T 75336	19	32	165.9	154.33	100	45
T 72723	19	35	165.9	154.33	100	45
T 72724	19	38	165.9	154.33	100	45

B1	r3	c
16.2	26	2.5

Re azové koleso 1" x 17.02 mm (16B-1)

s otvorom, drážkou a skrutkou

Oce C 43



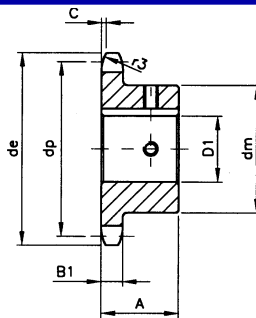
Obj. číslo	zubov	D1	de	dp	dm	A
T 72725	19	40	165.9	154.33	100	45
T 75337	19	42	165.9	154.33	100	45
T 72726	19	45	165.9	154.33	100	45
T 75338	19	48	165.9	154.33	100	45
T 72727	19	50	165.9	154.33	100	45
T 75339	20	25	173.9	162.38	80	45
T 75340	20	28	173.9	162.38	80	45
T 75341	20	30	173.9	162.38	80	45
T 75342	20	32	173.9	162.38	100	45
T 72728	20	35	173.9	162.38	100	45
T 72729	20	38	173.9	162.38	100	45
T 72730	20	40	173.9	162.38	100	45
T 75343	20	42	173.9	162.38	100	45
T 72731	20	45	173.9	162.38	100	45
T 75344	20	48	173.9	162.38	100	45
T 72732	20	50	173.9	162.38	100	45
T 75345	21	25	182.0	170.43	80	50
T 75346	21	28	182.0	170.43	80	50
T 75347	21	30	182.0	170.43	80	50
T 75348	21	32	182.0	170.43	100	50
T 72733	21	35	182.0	170.43	100	50
T 72734	21	38	182.0	170.43	100	50
T 72735	21	40	182.0	170.43	110	50
T 75349	21	42	182.0	170.43	110	50
T 72736	21	45	182.0	170.43	110	50
T 75350	21	48	182.0	170.43	110	50
T 72737	21	50	182.0	170.43	110	50
T 75352	22	25	190.1	178.48	80	50
T 75353	22	28	190.1	178.48	80	50
T 75354	22	30	190.1	178.48	80	50
T 75355	22	32	190.1	178.48	100	50
T 75356	22	35	190.1	178.48	100	50
T 75357	22	38	190.1	178.48	100	50
T 75358	22	40	190.1	178.48	110	50
T 75359	22	42	190.1	178.48	110	50
T 75360	22	45	190.1	178.48	110	50
T 75361	22	48	190.1	178.48	110	50
T 75362	22	50	190.1	178.48	110	50
T 75363	23	25	198.1	186.53	80	50
T 75364	23	28	198.1	186.53	80	50
T 75365	23	30	198.1	186.53	80	50
T 75366	23	32	198.1	186.53	100	50
T 75367	23	35	198.1	186.53	100	50
T 75368	23	38	198.1	186.53	100	50

B1	r3	c
16.2	26	2.5

Re azové koleso 1" x 17.02 mm (16B-1)

s otvorom, drážkou a skrutkou

Oce C 43



Obj. číslo	zubov	D1	de	dp	dm	A
T 75369	23	40	198.1	186.53	110	50
T 75370	23	42	198.1	186.53	110	50
T 75371	23	45	198.1	186.53	110	50
T 75372	23	48	198.1	186.53	110	50
T 75373	23	50	198.1	186.53	110	50
T 75374	24	25	206.2	194.59	80	50
T 75375	24	28	206.2	194.59	80	50
T 75376	24	30	206.2	194.59	80	50
T 75377	24	32	206.2	194.59	100	50
T 75378	24	35	206.2	194.59	100	50
T 75379	24	38	206.2	194.59	100	50
T 75380	24	40	206.2	194.59	110	50
T 75381	24	42	206.2	194.59	110	50
T 75382	24	45	206.2	194.59	110	50
T 75383	24	48	206.2	194.59	110	50
T 75384	24	50	206.2	194.59	110	50
T 75385	25	25	214.2	202.66	80	50
T 75386	25	28	214.2	202.66	80	50
T 75387	25	30	214.2	202.66	80	50
T 75388	25	32	214.2	202.66	100	50
T 75389	25	35	214.2	202.66	100	50
T 75390	25	38	214.2	202.66	100	50
T 75391	25	40	214.2	202.66	110	50
T 75392	25	42	214.2	202.66	110	50
T 75393	25	45	214.2	202.66	110	50
T 75394	25	48	214.2	202.66	110	50
T 75395	25	50	214.2	202.66	110	50

B1	r3	c
16.2	26	2.5

INFO O VÝROBKU

Re azové kolesá

Polotovar s nábojom a predv tanou dierou

Polotovar s nábojom, predv tanou dierou a kalenými zubmi

Nerezové re azové kolesá

Re azové kolesá s nábojom pre Taper Lock®

Re azové kolesá s nábojom a kalenými zubmi pre Taper Lock®

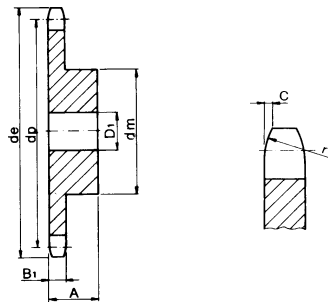
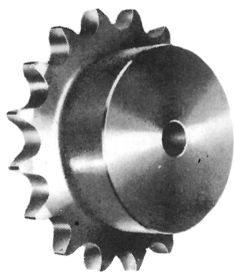
Re azové kolesá bez náboja s predv tanou dierou

Re azové kolesá pre dve jednoradové aze

Re azové koleso s nábojom 5 x 2.5 mm (03-1)

pre val ekové re aze DIN 8187/ ISO R606

Oce C 43



1-radové

Obj. číslo

zubov

de

dp

A

1-radové- simplex

dm

D1

Na opýtanie

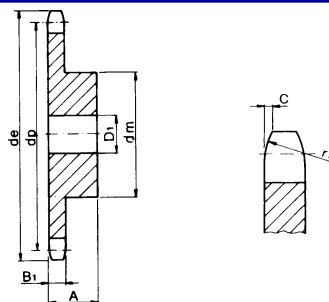
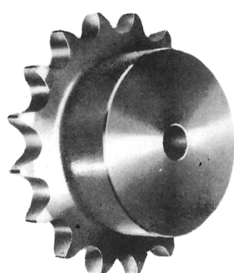
8	14.8	13.06	10	7	4
9	16.4	14.62	10	8	5
10	17.9	16.18	10	9	5
11	19.5	17.75	10	11	6
12	21.1	19.32	10	12	6
13	22.6	20.89	10	14	6
14	24.2	22.47	10	15	6
15	25.8	24.04	10	16	6
16	27.4	25.63	13	18	8
17	29.0	27.20	13	18	8
18	30.5	28.79	13	18	8
19	32.1	30.38	13	18	8
20	33.7	31.96	13	18	8
21	35.3	33.54	13	20	8
22	36.9	35.13	13	20	8
23	38.5	36.72	13	20	8
24	40.1	38.30	13	20	8
25	41.6	39.89	13	20	8
26	43.2	41.48	15	25	8
27	44.8	43.07	15	25	8
28	46.4	44.65	15	25	8
29	48.0	46.25	15	25	8
30	49.6	47.83	15	25	8
31	51.2	49.42	15	30	8
32	52.8	51.01	15	30	8
33	54.4	52.60	15	30	8
34	55.9	54.19	15	30	8
35	57.5	55.78	15	30	8
36	59.1	57.37	15	30	8
37	60.7	58.96	15	30	8
38	62.3	60.54	15	30	8
39	63.9	62.13	15	30	8
40	65.5	63.73	15	30	8

B1	r3	c
2.3	5	0.4

Re azové koleso s nábojom 6 x 2.8 mm (04-1)

pre val ekové re aze DIN 8187/ ISO R606

Oce C 43



1-radové

Obj. číslo	zubov	de	dp	A	dm	D1
T 13615	8	18.0	15.67	10	9.8	5
T 13616	9	19.9	17.54	10	11.5	5
T 13617	10	21.7	19.42	10	13.0	6
T 13618	11	23.6	21.30	10	14.0	6
T 13619	12	25.4	23.18	10	16.0	6
T 13620	13	27.3	25.05	10	18.0	6
T 13621	14	29.2	26.96	10	20.0	6
T 13622	15	31.1	28.86	10	20.0	6
T 13623	16	33.0	30.76	13	20.0	8
T 13624	17	35.0	32.65	13	20.0	8
T 13625	18	36.9	34.55	13	20.0	8
T 13626	19	38.8	36.44	13	20.0	8
T 13627	20	40.7	38.34	13	20.0	8
T 13628	21	42.6	40.25	13	25.0	8
T 13629	22	44.5	42.16	13	25.0	8
T 13630	23	46.4	44.06	13	25.0	8
T 13631	24	48.3	45.96	13	25.0	8
T 13632	25	50.2	47.87	13	25.0	8
T 13633	26	52.1	49.77	15	30.0	8
T 13634	27	54.0	51.67	15	30.0	8
T 13635	28	55.9	53.58	15	30.0	8
T 13636	29	57.8	55.50	15	30.0	8
T 13637	30	59.8	57.42	15	30.0	8
T 13638	31	61.7	59.31	15	30.0	10
T 13639	32	63.6	61.21	15	30.0	10
T 13640	33	65.5	63.11	15	30.0	10
T 13641	34	67.4	65.02	15	30.0	10
T 13642	35	69.3	66.93	15	30.0	10
T 13643	36	71.2	68.84	15	30.0	10
T 13644	37	73.1	70.75	15	30.0	10
T 13645	38	75.0	72.66	15	30.0	10
T 13646	39	76.9	74.56	15	30.0	10
T 13647	40	78.9	76.47	15	30.0	10
T 64962	45	88.5	86.01	18	62.0	12
T 64963	50	98.0	95.55	18	62.0	12
T 64964	57	111.4	108.93	18	62.0	12

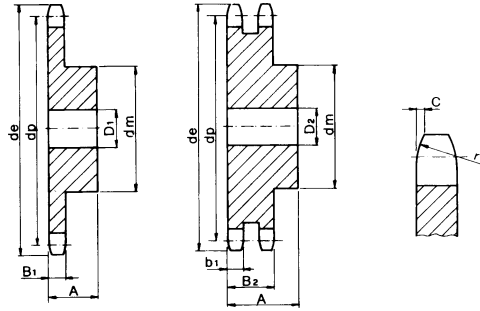
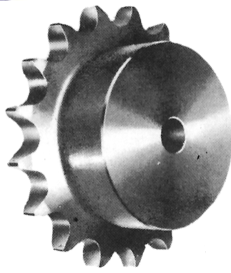
1-radové- simplex

B1	r3	c
2.6	6	0.6

Re azové koleso s nábojom 8 x 3 mm (05B -1 -2)

pre val ekové re aze DIN 8187/ ISO R606

Oce C 43



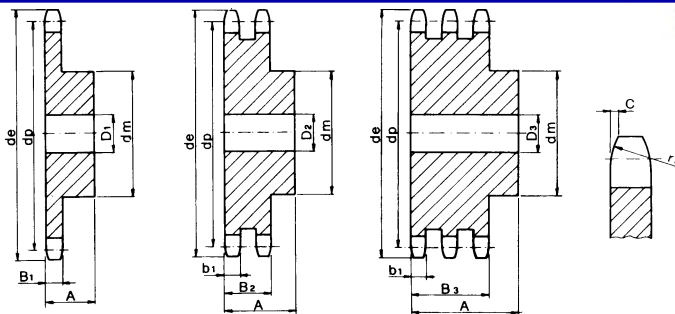
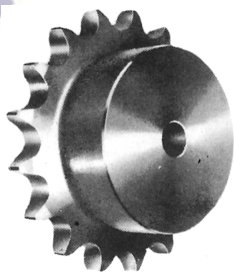
1-radové		2-radové		1-radové- simplex						2-radové- duplex		
Obj. číslo	Obj. číslo	zubov	de	dp	A	dm	D1	A	dm	D2		
T 13648	T 13681	8	23.4	20.90	12	13	6	18	12	6		
T 13649	T 13682	9	25.9	23.39	12	15	6	18	15	6		
T 13650	T 13683	10	28.4	25.89	12	17	6	18	17	8		
T 13651	T 13684	11	31.0	28.39	13	18	7	18	19	8		
T 13652	T 13685	12	33.7	30.91	13	20	7	18	21	8		
T 13653	T 13686	13	36.7	33.42	13	23	7	18	24	8		
T 13654	T 13687	14	39.2	35.95	13	25	7	18	26	8		
T 13655	T 13688	15	41.7	38.48	13	28	7	18	29	8		
T 13656	T 13689	16	44.2	41.01	14	30	8	20	32	10		
T 13657	T 13690	17	46.7	43.53	14	30	8	20	34	10		
T 13658	T 13691	18	49.2	46.07	14	30	8	20	37	10		
T 13659	T 13692	19	51.7	48.61	14	30	8	20	39	10		
T 13660	T 13693	20	54.2	51.14	14	30	8	20	40	10		
T 13661	T 13694	21	57.2	53.67	14	35	8	20	45	12		
T 13662	T 13695	22	59.4	56.21	14	35	8	20	45	12		
T 13663	T 13696	23	62.2	58.75	14	35	8	20	45	12		
T 13664	T 13697	24	64.7	61.29	14	35	8	20	45	12		
T 13665	T 13698	25	67.2	63.83	14	35	8	20	45	12		
T 13666	T 13699	26	69.7	66.37	16	40	10	22	50	12		
T 13667	T 13700	27	72.3	68.91	16	40	10	22	50	12		
T 13668	-	28	74.7	71.45	16	40	10	-	-	-		
T 13669	-	29	77.2	73.99	16	40	10	-	-	-		
T 13670	T 13703	30	80.2	76.53	16	40	10	22	50	12		
T 13671	-	31	82.7	79.08	16	40	12	-	-	-		
T 13672	T 13705	32	85.2	81.61	16	40	12	22	60	12		
T 13673	T 13706	33	87.7	84.16	16	40	12	22	60	12		
T 13674	-	34	90.2	86.70	16	40	12	-	-	-		
T 13675	T 13708	35	92.7	89.24	16	40	12	22	60	12		
T 13676	T 13709	36	95.2	91.79	16	40	12	22	60	12		
T 13677	-	37	97.7	94.33	16	40	12	-	-	-		
T 13678	T 13711	38	100.2	96.88	16	40	12	22	60	12		
T 13679	-	39	102.7	99.42	16	40	12	-	-	-		
T 13680	T 13713	40	105.7	101.97	16	40	12	22	60	12		
T 64965	-	45	118.6	114.69	20	60	12	-	-	-		
T 64966	-	48	131.5	127.41	20	60	12	-	-	-		
T 64967	-	57	149.3	145.22	20	80	14	-	-	-		

B1	B2	r3	c	b1
2.8	8.3	8	0.8	2.7

Re azové koleso s nábojom 3/8" x 7/32" (06B -1 -2 -3)

pre val ekové re aze DIN 8187/ ISO R606

Oce C 43



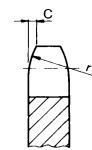
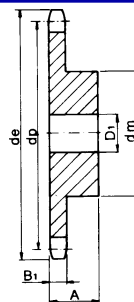
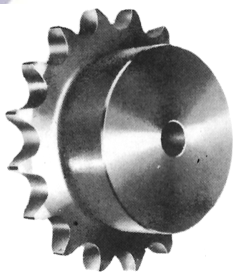
1-radové	2-radové	3-radové		1-radové- simplex			2-radové- duplex			3-radové- triplex				
Obj. číslo	Obj. číslo	Obj. číslo	zubov	de	dp	A	dm	D1	A	dm	D2	A	dm	D3
T 10829	T 13714	T 13747	8	26.8	24.89	20	15	8	25	15	8	32	15	8
T 09578	T 13715	T 13748	9	31.5	27.85	20	18	8	25	18	8	32	18	8
T 10114	T 13716	T 13749	10	34.5	30.82	20	20	8	25	20	8	32	20	10
T 08188	T 13717	T 13750	11	37.5	33.80	25	22	8	30	22	10	35	22	12
T 08189	T 13718	T 13751	12	40.5	36.80	25	25	8	30	25	10	35	25	12
T 08190	T 13719	T 13752	13	43.5	39.80	25	28	10	30	28	10	35	28	12
T 08191	T 13720	T 13753	14	46.5	42.80	25	31	10	30	31	10	35	31	12
T 08192	T 13721	T 13754	15	49.5	45.81	25	34	10	30	34	10	35	34	12
T 08193	T 13722	T 13755	16	52.5	48.82	28	37	10	30	37	12	35	37	12
T 08194	T 13723	T 13756	17	55.5	51.83	28	40	10	30	40	12	35	40	12
T 08195	T 13724	T 13757	18	58.6	54.85	28	43	10	30	43	12	35	43	12
T 08196	T 13725	T 13758	19	61.6	57.87	28	45	10	30	46	12	35	46	12
T 08199	T 13726	T 13759	20	64.6	60.89	28	46	10	30	49	12	35	49	12
T 10830	T 13727	T 13760	21	67.6	63.91	28	48	12	30	52	16	40	52	16
T 10831	T 13728	T 13761	22	70.6	66.93	28	50	12	30	55	16	40	55	16
T 10832	T 13729	T 13762	23	73.7	69.95	28	52	12	30	58	16	40	58	16
T 08197	T 13730	T 13763	24	76.7	72.97	28	54	12	30	61	16	40	61	16
T 10833	T 13731	T 13764	25	79.7	76.00	28	57	12	30	64	16	40	64	16
T 10834	T 13732	T 13765	26	82.7	79.02	28	60	12	30	67	16	40	67	16
T 08198	T 13733	T 13766	27	85.7	82.04	28	60	12	30	70	16	40	70	16
T 10790	T 13734	T 13767	28	88.8	85.07	28	60	12	30	73	16	40	73	16
T 10835	T 13735	T 13768	29	91.8	88.09	28	60	12	30	76	16	40	76	16
T 10836	T 13736	T 13769	30	94.8	91.12	30	60	12	30	79	16	40	79	16
T 10837	T 13737	T 13770	31	97.9	94.15	30	65	14	30	80	16	40	80	16
T 10838	T 13738	T 13771	32	100.9	97.17	30	65	14	30	80	16	40	80	16
T 10839	T 13739	T 13772	33	103.9	100.20	30	65	14	30	80	16	40	80	16
T 10840	T 13740	T 13773	34	106.9	103.23	30	65	14	30	80	16	40	85	16
T 10841	T 13741	T 13774	35	110.0	106.26	30	65	14	30	80	16	40	85	16
T 10842	T 13742	T 13775	36	113.0	109.29	30	70	16	30	90	16	40	90	16
T 12892	T 13743	T 13776	37	116.0	112.32	30	70	16	30	90	16	40	90	16
T 10843	T 13744	T 13777	38	119.0	115.34	30	70	16	30	90	16	40	90	16
T 12893	T 13745	T 13778	39	122.1	118.37	30	70	16	30	90	16	40	90	16
T 10844	T 13746	T 13779	40	125.1	121.40	30	70	16	30	90	16	40	90	16

B1	B2	B3	r3	c	b1
5.3	15.4	25.6	10	1	5.2

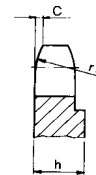
Re azové koleso s nábojom 1/2" x 1/8" (081-1)

pre val ekové re aze DIN 8187/ ISO R606

Oce C 43



$z \leq 31$



$z \geq 31$

1-radové

Obj. číslo	zubov	de	dp	A	dm	D1
T 12894	8	39.5	33.18	14	21	8
T 12895	9	43.4	37.13	14	25	8
T 12896	10	47.4	41.10	14	28	8
T 12897	11	51.4	45.07	16	31	8
T 08200	12	55.4	49.07	16	35	8
T 08201	13	59.4	53.06	16	39	8
T 08202	14	63.4	57.07	16	43	8
T 08203	15	67.4	61.09	16	47	8
T 08204	16	71.4	65.10	18	50	10
T 08205	17	75.4	69.11	18	50	10
T 08206	18	79.4	73.14	18	50	10
T 08207	19	83.5	77.16	18	50	10
T 08208	20	87.5	81.19	18	50	10
T 12898	21	91.5	85.22	20	60	12
T 12899	22	95.5	89.24	20	60	12
T 12900	23	99.6	93.27	20	60	12
T 08209	24	103.6	97.29	20	60	12
T 12901	25	107.6	101.33	20	60	12
T 12902	26	111.7	105.36	20	70	16
T 12903	27	115.7	109.40	20	70	16
T 12904	28	119.7	113.42	20	70	16
T 12905	29	123.8	117.46	20	70	16
T 12906	30	127.8	121.50	20	70	16
T 12908	32	135.9	129.56	20	70	16
T 12910	34	143.9	137.64	20	70	16
T 12911	35	148.0	141.68	20	70	16
T 12912	36	152.0	145.72	25	70	16
T 12913	37	156.1	149.76	25	70	16
T 12914	38	160.1	153.80	25	70	16
T 12915	39	164.1	157.83	25	70	16
T 12916	40	168.2	161.87	25	70	16

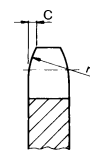
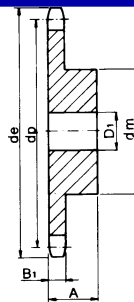
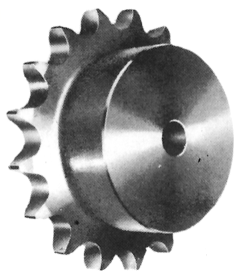
1-radové - simplex

B1	r3	c	h
3	13	1.3	$z \geq 31 = 4$

Re azové koleso s nábojom 1/2" x 3/16" (083-1/084-1)

pre val ekové re aze DIN 8187/ ISO R606

Oce C 43



1-radové

Obj. číslo

zubov

de

dp

A

1-radové- simplex

dm

D1

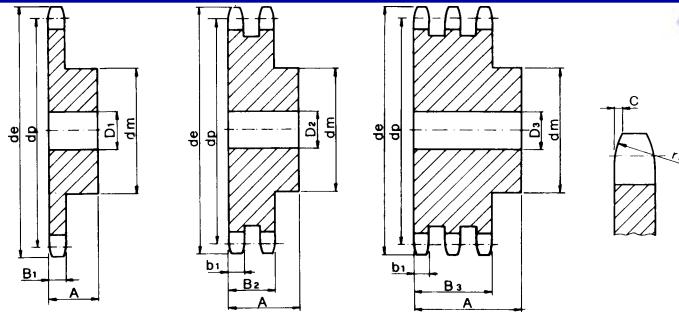
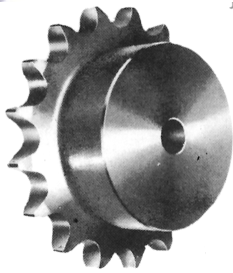
Obj. číslo	zubov	de	dp	A	dm	D1
T 12674	8	39.5	33.18	14	21	8
T 12675	9	43.4	37.13	14	25	8
T 12676	10	47.4	41.10	14	28	8
T 12677	11	51.4	45.07	16	31	8
T 08210	12	55.4	49.07	16	35	8
T 08211	13	59.4	53.06	16	39	8
T 08212	14	63.4	57.07	16	43	8
T 08213	15	67.4	61.09	16	47	8
T 08214	16	71.4	65.10	18	50	10
T 08215	17	75.4	69.11	18	50	10
T 08216	18	79.4	73.14	18	50	10
T 08217	19	83.5	77.16	18	50	10
T 08218	20	87.5	81.19	18	50	10
T 08219	21	91.5	85.22	20	60	12
T 12917	22	95.5	89.24	20	60	12
T 12678	23	99.6	93.27	20	60	12
T 12679	24	103.6	97.29	20	60	12
T 12918	25	107.6	101.33	20	60	12
T 12919	26	111.7	105.36	20	70	16
T 12920	27	115.7	109.40	20	70	16
T 12921	28	119.7	113.42	20	70	16
T 12925	29	123.8	117.46	20	70	16
T 12926	30	127.8	121.50	20	70	16
T 12927	31	131.8	125.54	20	70	16
T 12928	32	135.9	129.56	20	70	16
T 12929	33	139.9	133.60	20	70	16
T 12930	34	143.9	137.64	20	70	16
T 12931	35	148.0	141.68	20	70	16
T 12932	36	152.0	145.72	25	70	16
T 12933	37	156.1	149.76	25	70	16
T 12934	38	160.1	153.80	25	70	16
T 12935	39	164.1	157.83	25	70	16
T 12936	40	168.2	161.87	25	70	16

B1	r3	c
4.5	13	1.3

Re azové koleso s nábojom 1/2"x5/16" (08B-1 -2 -3)

pre val ekové re aze DIN 8187/ ISO R606

Oce C 43



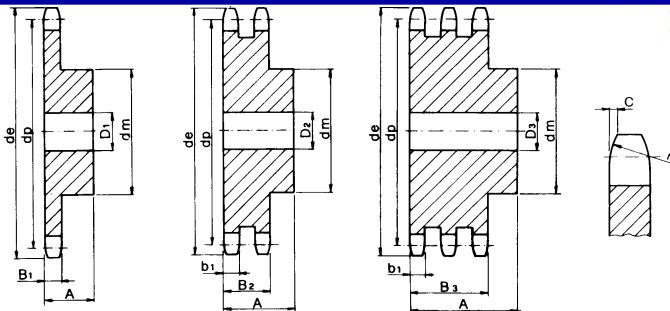
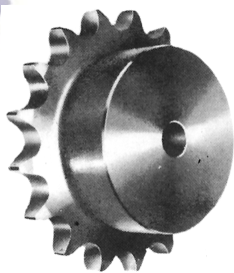
1-radové			2-radové			3-radové			1-radové- simplex					2-radové- duplex			3-radové - triplex		
Obj. číslo	Obj. číslo	Obj. číslo	zubov	de	dp	A	dm	D1	A	dm	D2	A	dm	D3					
T 08220	T 12938	T 13780	8	38.0	33.18	25	20	10	32	20	10	46	20	10					
T 08221	T 12939	T 13781	9	42.0	37.13	25	24	10	32	24	10	46	24	12					
T 08222	T 10874	T 13782	10	45.9	41.10	25	26	10	32	28	10	46	28	12					
T 08223	T 12216	T 13783	11	49.9	45.07	25	29	10	35	32	12	50	32	16					
T 08224	T 10875	T 13784	12	53.9	49.07	28	33	10	35	35	12	50	35	16					
T 08225	T 09393	T 13785	13	57.9	53.06	28	37	10	35	38	12	50	38	16					
T 08226	T 12217	T 13786	14	61.9	57.07	28	41	10	35	42	12	50	42	16					
T 08227	T 09558	T 13787	15	65.9	61.09	28	45	10	35	46	12	50	46	16					
T 08228	T 12940	T 13788	16	69.9	65.10	28	50	12	38	50	16	50	50	16					
T 08229	T 09394	T 13789	17	74.0	69.11	28	52	12	38	54	16	50	54	16					
T 08230	T 12941	T 13790	18	78.0	73.14	28	56	12	38	58	16	50	58	16					
T 08231	T 10876	T 13791	19	82.0	77.16	28	60	12	38	62	16	50	62	16					
T 08232	T 09879	T 13792	20	86.0	81.19	28	64	12	38	66	16	50	66	16					
T 08233	T 10877	T 13793	21	90.1	85.22	28	68	14	40	70	16	55	70	16					
T 08234	T 12218	T 13794	22	94.1	89.24	28	70	14	40	70	16	55	70	16					
T 08235	T 12219	T 13795	23	98.1	93.27	28	70	14	40	70	16	55	70	16					
T 08236	T 12220	T 13796	24	102.1	97.29	28	70	14	40	75	16	55	75	16					
T 08964	T 12221	T 13797	25	106.2	101.33	28	70	14	40	80	16	55	80	16					
T 08965	T 12882	T 13798	26	110.2	105.36	30	70	16	40	85	16	55	85	20					
T 08237	T 12222	T 13799	27	114.2	109.40	30	70	16	40	85	16	55	85	20					
T 09572	T 12223	T 13800	28	118.3	113.42	30	70	16	40	90	16	55	90	20					
T 10845	T 12942	T 13801	29	122.3	117.46	30	80	16	40	95	16	55	95	20					
T 08238	T 10878	T 13802	30	126.3	121.50	30	80	16	40	100	16	55	100	20					
T 09363	T 12943	T 13803	31	130.4	125.54	30	90	16	40	100	20	55	110	20					
T 09573	T 12224	T 13804	32	134.4	129.56	30	90	16	40	100	20	55	110	20					
T 09574	T 12944	T 13805	33	138.4	133.60	30	90	16	40	100	20	55	110	20					
T 08239	T 12225	T 13806	34	142.4	137.64	30	90	16	40	100	20	55	110	20					
T 10846	T 12226	T 13807	35	146.5	141.68	30	90	16	40	100	20	55	110	20					
T 08966	T 12227	T 13808	36	150.6	145.72	35	90	16	40	100	20	55	120	25					
T 10847	T 12229	T 13809	37	154.6	149.76	35	90	16	40	100	20	55	120	25					
T 10113	T 12228	T 13810	38	158.6	153.80	35	90	16	40	100	20	55	120	25					
T 12937	T 12945	T 13811	39	162.7	157.83	35	90	16	40	100	20	55	120	25					
T 09395	T 12230	T 13812	40	166.7	161.87	35	90	16	40	100	20	55	120	25					

B1	B2	B3	r3	c	b1
7.2	21	34.9	13	1.3	7

Re azové koleso s nábojom 5/8" x 3/8" (10B-1 -2 -3)

pre val ekové re aze DIN 8187/ ISO R606

Oce C 43 / Fe 410*



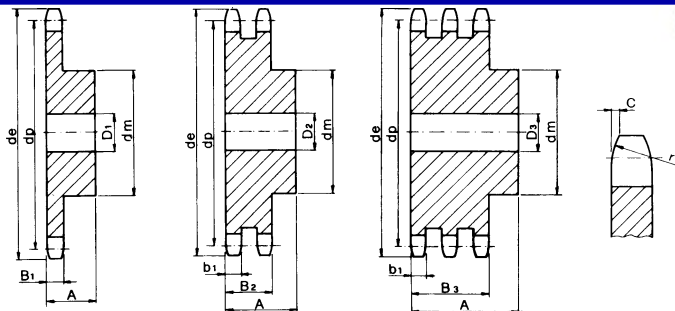
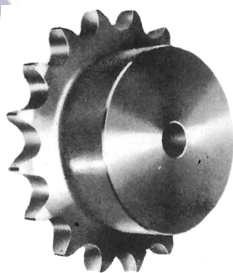
1-radové	2-radové	3-radové		1-radové- simplex			2-radové- duplex			3-radové - triplex				
Obj. číslo	Obj. číslo	Obj. číslo	zubov	de	dp	A	dm	D1	A	dm	D2	A	dm	D3
T 10849	T 12948	T 13813	8	48.4	41.08	25	25	10	40	25	12	55	25	12
T 10850	T 12949	T 13814	9	53.3	46.42	25	30	10	40	30	12	55	30	12
T 08240	T 12232	T 13815	10	58.3	51.37	25	35	10	40	35	12	55	35	16
T 08241	T 08258	T 13816	11	63.2	56.34	30	37	12	40	39	16	55	39	16
T 08242	T 12233	T 13817	12	68.2	61.34	30	42	12	40	44	16	55	44	16
T 08243	T 12234	T 13818	13	73.2	66.32	30	47	12	40	49	16	55	49	16
T 08244	T 08260	T 13819	14	78.2	71.34	30	52	12	40	54	16	55	54	16
T 08245	T 12235	T 13820	15	83.2	76.36	30	57	12	40	59	16	55	59	16
T 08246	T 12950	T 13821	16	88.3	81.37	30	60	12	45	64	16	60	64	16
T 08247	T 12236	T 13822	17	93.3	86.39	30	60	12	45	69	16	60	69	16
T 08248	T 12951	T 13823	18	98.3	91.42	30	70	14	45	74	16	60	74	16
T 08249	T 12237	T 13824	19	103.3	96.45	30	70	14	45	79	16	60	79	16
T 08250	T 08261	T 13825	20	108.4	101.49	30	75	14	45	84	16	60	84	16
T 08251	T 12238	T 13826	21	113.4	106.52	30	75	16	45	85	16	60	85	20
T 08252	T 12239	T 13827	22	118.4	111.55	30	80	16	45	90	16	60	90	20
T 08253	T 12952	T 13828	23	123.5	116.58	30	80	16	45	95	16	60	95	20
T 08254	T 12240	T 13829	24	128.5	121.62	30	80	16	45	100	16	60	100	20
T 10851	T 12241	T 13830	25	133.6	126.66	30	80	16	45	105	16	60	105	20
T 10852	T 12953	T 13831	26	138.6	131.70	35	85	20	45	110	20	60	110	20
T 08255	T 12242	T 13832	27	143.6	136.75	35	85	20	45	110	20	60	110	20
T 09356	T 12954	T 13833	28	148.7	141.78	35	90	20	45	115	20	60	115	20
T 12946	T 12955	T 13834	29	153.7	146.83	35	90	20	45	115	20	60	115	20
T 08256	T 12243	T 13835	30	158.8	151.87	35	90	20	45	120	20	60	120	20
T 10853	T 12956	T 13836	31	163.8	156.92	35	95	20	45	120*	20	60	120*	20
T 10854	T 12244	T 13837	32	168.9	161.95	35	95	20	45	120*	20	60	120*	20
T 10855	T 12957	T 13838	33	173.9	167.00	35	95	20	45	120*	20	60	120*	20
T 10856	T 12958	T 13839	34	178.9	172.05	35	95	20	45	120*	20	60	120*	20
T 08257	T 12959	T 13840	35	184.0	177.10	35	95	20	45	120*	20	60	120*	20
T 10857	T 12960	T 13841	36	189.0	182.15	35	100	20	45	120*	20	60	120*	25
T 10858	T 12961	T 13842	37	194.1	187.20	35	100	20	45	120*	20	60	120*	25
T 10859	T 12962	T 13843	38	199.1	192.24	35	100	20	45	120*	20	60	120*	25
T 12947	T 12963	T 13844	39	204.2	197.29	35	100	20	45	120*	20	60	120*	25
T 10860	T 12964	T 13845	40	209.2	202.34	35	100	20	45	120*	20	60	120*	25

B1	B2	B3	r3	c	b1
9.1	25.5	42.1	16	1.6	9

Re azové koleso s nábojom 3/4"x7/16" (12B -1 -2 -3)

pre val ekové re aze DIN 8187/ ISO R606

Oce C 43 / Fe 410*



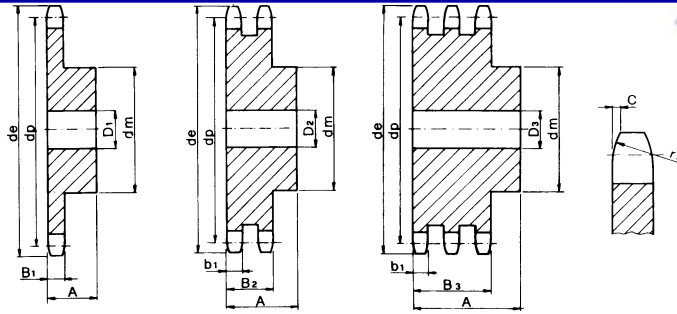
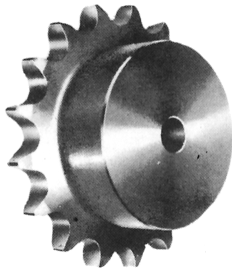
1-radové	2-radové	3-radové		1-radové- simplex			2-radové- duplex			3-radové - triplex				
Obj. číslo	Obj. číslo	Obj. číslo	zubov	de	dp	A	dm	D1	A	dm	D2	A	dm	D3
T 10861	T 13846	T 13879	8	58.0	49.78	30	31	12	45	31	12	65	31	16
T 10862	T 13847	T 13880	9	63.9	55.70	30	37	12	45	37	12	65	37	16
T 10863	T 13848	T 13881	10	69.8	61.64	30	42	12	45	42	12	65	42	16
T 08264	T 13849	T 13882	11	75.8	67.61	35	46	16	50	47	16	70	47	20
T 08265	T 13850	T 13883	12	81.8	73.60	35	52	16	50	53	16	70	53	20
T 08266	T 13851	T 13884	13	87.8	79.59	35	58	16	50	59	16	70	59	20
T 08267	T 13852	T 13885	14	93.8	85.61	35	64	16	50	65	16	70	65	20
T 08268	T 13853	T 13886	15	99.8	91.63	35	70	16	50	71	16	70	71	20
T 08269	T 13854	T 13887	16	105.8	97.65	35	75	16	50	77	20	70	77	20
T 08270	T 13855	T 13888	17	111.9	103.67	35	80	16	50	83	20	70	83	20
T 08271	T 13856	T 13889	18	117.9	109.71	35	80	16	50	89	20	70	89	20
T 08272	T 13857	T 13890	19	123.9	115.75	35	80	16	50	95	20	70	95	20
T 08273	T 13858	T 13891	20	130.0	121.78	35	80	16	50	100	20	70	100	20
T 08274	T 13859	T 13892	21	136.0	127.82	40	90	20	50	100	20	70	100	20
T 08275	T 13860	T 13893	22	142.0	133.86	40	90	20	50	100	20	70	100	20
T 08276	T 13861	T 13894	23	148.1	139.90	40	90	20	50	110	20	70	110	20
T 08277	T 13862	T 13895	24	154.1	145.94	40	90	20	50	110	20	70	110	20
T 10864	T 13863	T 13896	25	160.2	152.00	40	90	20	50	120	20	70	120	20
T 10865	T 13864	T 13897	26	166.2	158.04	40	95	20	50	120	20	70	120	20
T 08278	T 13865	T 13898	27	172.3	164.09	40	95	20	50	120	20	70	120	20
T 10866	T 13866	T 13899	28	178.3	170.13	40	95	20	50	120	20	70	120	20
T 12965	T 13867	T 13900	29	184.4	176.19	40	95	20	50	120	20	70	120	20
T 08279	T 13868	T 13901	30	190.4	182.25	40	95	20	50	120	20	70	120	20
T 09364	T 13869	T 13902	31	196.5	188.31	40	95	20	50	120*	20	70	130*	25
T 10867	T 13870	T 13903	32	202.5	194.35	40	95	20	50	120*	20	70	130*	25
T 10868	T 13871	T 13904	33	208.6	200.40	40	95	20	50	120*	20	70	130*	25
T 10869	T 13872	T 13905	34	214.6	206.46	40	95	20	50	120*	20	70	130*	25
T 10870	T 13873	T 13906	35	220.7	212.52	40	95	20	50	120*	20	70	130*	25
T 10871	T 13874	T 13907	36	226.8	218.58	40	100	20	50	120*	25	70	130*	25
T 12966	T 13875	T 18371	37	232.8	224.64	40	100	20	50	120*	25	70	130*	25
T 10872	T 13876	T 18372	38	238.9	230.69	40	100	20	50	120*	25	70	130*	25
T 12967	T 13877	T 18373	39	244.9	236.75	40	100	20	50	120*	25	70	130*	25
T 10873	T 13878	T 18374	40	251.0	242.81	40	100	20	50	120*	25	70	130*	25

B1	B2	B3	r3	c	b1
11.1	30.3	49.8	19	2	10.8

Re azové koleso s nábojom 1"x17.02 mm (16B-1-2-3)

pre val ekové re aze DIN 8187/ ISO R606

Oce C 43 / Fe 410*



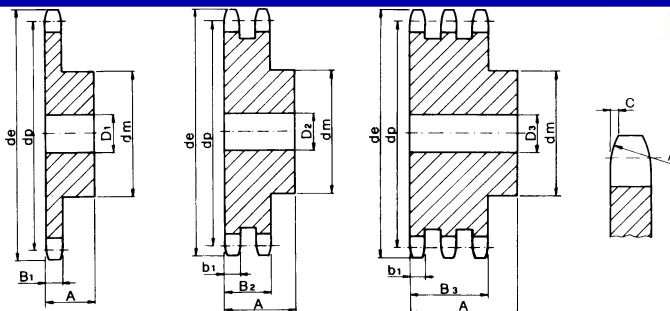
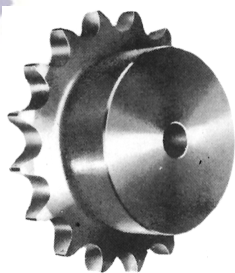
1-radové			2-radové			3-radové			1-radové- simplex					2-radové- duplex			3-radové - triplex		
Obj. číslo	Obj. číslo	Obj. číslo	zubov	de	dp	A	dm	D1	A	dm	D2	A	dm	D3					
T 12202	T 13908	T 13941	8	77.9	66.37	35	42	16	65	42	20	95	42	20					
T 12968	T 13909	T 13942	9	85.8	74.27	35	50	16	65	50	20	95	50	20					
T 12203	T 13910	T 13943	10	93.8	82.19	35	55	16	65	56	20	95	56	20					
T 12969	T 13911	T 13944	11	101.7	90.14	40	61	16	70	64	20	100	64	25					
T 12970	T 13912	T 13945	12	109.7	98.14	40	69	16	70	72	20	100	72	25					
T 12204	T 13913	T 13946	13	117.7	106.12	40	78	16	70	80	20	100	80	25					
T 12971	T 13914	T 13947	14	125.7	114.15	40	84	16	70	88	20	100	88	25					
T 12205	T 13915	T 13948	15	133.7	122.17	40	92	16	70	96	20	100	96	25					
T 12206	T 13916	T 13949	16	141.8	130.20	45	100	20	70	104	20	100	104	25					
T 09986	T 13917	T 13950	17	149.8	138.22	45	100	20	70	112	20	100	112	25					
T 12207	T 13918	T 13951	18	157.8	146.28	45	100	20	70	120	20	100	120	25					
T 12208	T 13919	T 13952	19	165.9	154.33	45	100	20	70	128	20	100	128	25					
T 08500	T 13920	T 13953	20	173.9	162.38	45	100	20	70	130	20	100	130	25					
T 12209	T 13921	T 13954	21	182.0	170.43	50	110	20	70	130	25	100	130*	25					
T 12972	T 13922	T 13955	22	190.1	178.48	50	110	20	70	130*	25	100	130*	25					
T 12973	T 13923	T 13956	23	198.1	186.53	50	110	20	70	130*	25	100	130*	25					
T 12210	T 13924	T 13957	24	206.2	194.59	50	110	20	70	130*	25	100	130*	25					
T 12211	T 13925	T 13958	25	214.2	202.66	50	110	20	70	130*	25	100	130*	25					
T 12974	T 13926	T 13959	26	222.3	210.72	50	120	20	70	130*	25	100	130*	30					
T 12212	T 13927	T 13960	27	230.4	218.79	50	120	20	70	130*	25	100	130*	30					
T 12213	T 13928	T 13961	28	238.4	226.85	50	120	20	70	130*	25	100	130*	30					
T 12975	T 13929	T 13962	29	246.5	234.92	50	120	20	70	130*	25	100	130*	30					
T 12214	T 13930	T 13963	30	254.6	243.00	50	120	20	70	130*	25	100	130*	30					
T 12976	T 13931	T 13964	31	262.6	251.08	50	120*	25	70	140*	25	100	140*	30					
T 12215	T 13932	T 13965	32	270.7	259.13	50	120*	25	70	140*	25	100	140*	30					
T 12977	T 13933	T 13966	33	278.8	267.21	50	120*	25	70	140*	25	100	140*	30					
T 12978	T 13934	T 13967	34	286.9	275.28	50	120*	25	70	140*	25	100	140*	30					
T 12673	T 13935	T 13968	35	294.9	283.36	50	120*	25	70	140*	25	100	140*	30					
T 12979	T 13936	T 13969	36	303.0	291.44	50	120*	25	70	140*	25	100	140*	30					
T 12980	T 13937	-	37	311.1	299.51	50	120*	25	70	140*	25	-	-	-					
T 12981	T 13938	T 13971	38	319.2	307.59	50	120*	25	70	140*	25	100	140*	30					
T 12982	T 13939	-	39	327.2	315.67	50	120*	25	70	140*	25	-	-	-					
T 12983	T 13940	T 13973	40	335.3	323.75	50	120*	25	70	140*	25	100	140*	30					

B1	B2	B3	r3	c	b1
16.2	47.7	79.6	26	2.5	15.8

Re azové koleso s nábojom 1 1/4"x3/4" (20B -1 -2 -3)

pre val ekové re aze DIN 8187/ ISO R606

Oce C 43 / Fe 410*



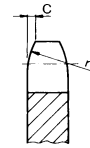
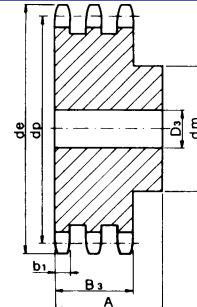
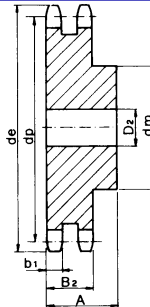
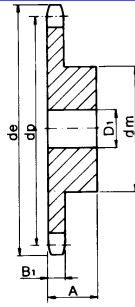
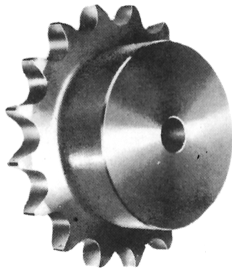
1-radové	2-radové	3-radové		1-radové-simplex			2-radové-duplex			3-radové-triplex				
Obj. číslo	Obj. číslo	Obj. číslo	zubov	de	dp	A	dm	D1	A	dm	D2	A	dm	D3
T 12984	T 13974	T 14007	8	96.0	82.96	40	53	20	75	53	20	110	53	25
T 12985	T 13975	T 14008	9	106.5	92.84	40	63	20	75	63	20	110	63	25
T 12986	T 13976	T 14009	10	117.0	102.74	40	70	20	75	70	20	110	70	25
T 12987	T 13977	T 14010	11	127.0	112.68	45	77	20	80	80	25	115	80	30
T 12988	T 13978	T 14011	12	137.0	122.68	45	88	20	80	90	25	115	90	30
T 12989	T 13979	T 14012	13	147.5	132.65	45	98	20	80	100	25	115	100	30
T 11269	T 13980	T 14013	14	157.6	142.68	45	108	20	80	110	25	115	110	30
T 12990	T 13981	T 14014	15	167.7	152.72	45	118	20	80	120	25	115	120	30
T 12991	T 13982	T 14015	16	177.7	162.75	50	120	25	80	120	30	115	120	30
T 10555	T 13983	T 14016	17	187.7	172.78	50	120	25	80	120	30	115	120	30
T 10556	T 13984	T 14017	18	197.8	182.85	50	120	25	80	120*	30	115	120*	30
T 12992	T 13985	T 14018	19	207.9	192.91	50	120	25	80	120*	30	115	120*	30
T 12993	T 13986	T 14019	20	217.9	202.98	50	120	25	80	120*	30	115	120*	30
T 12994	T 13987	T 14020	21	228.0	213.04	55	140	25	80	140*	30	115	140*	30
T 12995	T 13988	T 14021	22	238.1	223.11	55	140	25	80	140*	30	115	140*	30
T 12996	T 13989	T 14022	23	248.2	233.17	55	140	25	80	140*	30	115	140*	30
T 12997	T 13990	T 14023	24	258.3	243.23	55	140	25	80	140*	30	115	140*	30
T 12998	T 13991	T 14024	25	268.4	253.33	55	140	25	80	140*	30	115	140*	30
T 12999	T 13992	T 14025	26	278.4	263.40	55	150*	30	80	150*	30	115	150*	30
T 13000	T 13993	T 14026	27	288.5	273.48	55	150*	30	80	150*	30	115	150*	30
T 13058	T 13994	T 14027	28	298.5	283.56	55	150*	30	80	150*	30	115	150*	30
T 13059	T 13995	-	29	308.6	293.65	55	150*	30	80	150*	30	-	-	-
T 13060	T 13996	T 14029	30	318.7	303.65	55	150*	30	80	150*	30	115	150*	30
T 13061	T 13997	-	31	328.8	313.85	55	150*	30	80	150*	30	-	-	-
T 13062	T 13998	T 14031	32	338.9	323.91	55	150*	30	80	150*	30	115	150*	30
T 13063	-	T 14032	33	349.0	334.01	55	150*	30	-	-	-	115	150*	30
T 13064	T 14000	T 14033	34	359.1	344.10	55	150*	30	80	150*	30	115	150*	30
T 13065	T 14001	T 14034	35	369.2	354.20	55	150*	30	80	150*	30	115	150*	30
T 13066	T 14002	T 14035	36	379.2	364.30	55	150*	30	80	150*	30	115	150*	30
T 13067	-	-	37	389.3	374.39	55	150*	30	-	-	-	-	-	-
T 13068	T 14004	T 14037	38	399.4	384.49	55	150*	30	80	150*	30	115	150*	30
T 13069	-	-	39	409.5	394.59	55	150*	30	-	-	-	-	-	-
T 13070	T 14006	T 14039	40	419.6	404.66	55	150*	30	80	150*	30	115	150*	30

B1	B2	B3	r3	c	b1
18.5	54.6	91	32	3.5	18.2

Re azové koleso s nábojom 1 1/2" x 1" (24B -1 -2 -3)

pre val ekové re aze DIN 8187/ ISO R606

Oce C 43 / Fe 410*



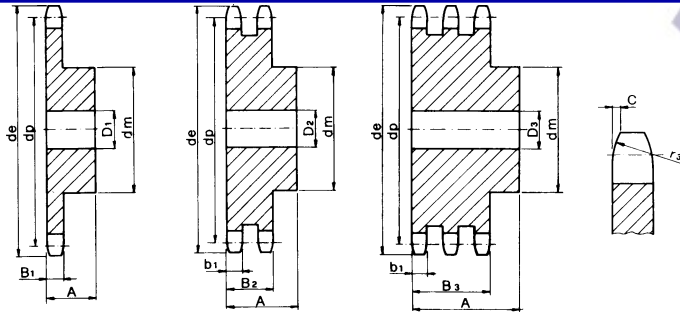
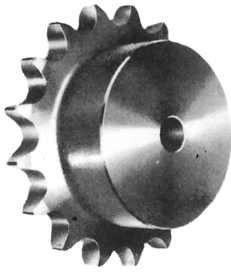
1-radové			2-radové			3-radové			1-radové- simplex					2-radové- duplex			3-radové - triplex		
Obj. číslo	Obj. číslo	Obj. číslo	zubov	de	dp	A	dm	D1	A	dm	D2	A	dm	D3					
T 14040	T 14073	T 14106	8	113.0	99.55	45	58	20	95	58	25	140	58	25					
T 14041	T 14074	T 14107	9	125.0	111.40	45	70	20	95	70	25	140	70	25					
T 14042	T 14075	T 14108	10	137.0	123.29	45	80	20	95	80	25	140	80	25					
T 14043	T 14076	T 14109	11	149.0	135.21	50	90	25	100	90	25	150	90	30					
T 14044	T 14077	T 14110	12	161.0	147.22	50	102	25	100	102	25	150	102	30					
T 14045	T 14078	T 14111	13	173.0	159.18	50	114	25	100	114	25	150	114	30					
T 14046	T 14079	T 14112	14	185.0	171.22	50	128	25	100	128	25	150	128	30					
T 14047	T 14080	T 14113	15	197.0	183.26	50	132	25	100	132	25	150	132	30					
T 14048	T 14081	T 14114	16	209.0	195.30	55	136*	25	100	136*	30	150	136*	30					
T 14049	T 14082	T 14115	17	221.0	207.34	55	136*	25	100	136*	30	150	136*	30					
T 14050	T 14083	T 14116	18	233.0	219.42	55	136*	25	100	160*	30	150	160*	30					
T 14051	T 14084	T 14117	19	245.5	231.49	55	136*	25	100	160*	30	150	160*	30					
T 14052	T 14085	T 14118	20	257.5	243.57	55	136*	25	100	160*	30	150	160*	30					
T 14053	T 14086	T 14119	21	270.5	255.65	60	150*	30	100	160*	30	150	160*	40					
T 14054	T 14087	T 14120	22	282.5	267.73	60	150*	30	100	160*	30	150	160*	40					
T 14055	T 14088	T 14121	23	294.5	279.80	60	150*	30	100	160*	30	150	160*	40					
T 14056	T 14089	T 14122	24	307.0	291.88	60	150*	30	100	160*	30	150	160*	40					
T 14057	T 14090	T 14123	25	319.0	304.00	60	150*	30	100	160*	30	150	160*	40					
T 14058	T 14091	T 14124	26	331.0	316.08	60	150*	30	100	160*	30	150	160*	40					
T 14059	T 14092	T 14125	27	343.0	328.19	60	150*	30	100	160*	30	150	160*	40					
T 14060	T 14093	T 14126	28	355.0	340.27	60	150*	30	100	160*	30	150	160*	40					
T 14061	T 14094	-	29	367.5	352.38	60	150*	30	100	160*	30	-	-	-					
T 14062	T 14095	T 14128	30	379.5	364.50	60	150*	30	100	160*	30	150	160*	40					
T 14063	T 14096	-	31	391.5	376.62	60	150*	30	100	160*	40	-	-	-					
T 14064	T 14097	T 14130	32	403.5	388.69	60	150*	30	100	160*	40	150	160*	40					
T 14065	T 14098	-	33	415.5	400.81	60	150*	30	100	160*	40	-	-	-					
T 14066	T 14099	-	34	428.0	412.83	60	150*	30	100	160*	40	-	-	-					
T 14067	T 14100	T 14133	35	440.0	425.04	60	150*	30	100	160*	40	150	160*	40					
T 14068	T 14101	-	36	452.0	437.16	60	150*	30	100	160*	40	-	-	-					
T 14069	T 14102	-	37	464.0	449.27	60	150*	30	100	160*	40	-	-	-					
T 14070	T 14103	T 14136	38	476.5	461.39	60	150*	30	100	160*	40	150	160*	40					
T 14072	T 14105	T 14138	40	501.5	485.62	60	150*	30	100	160*	40	150	160*	40					

B1	B2	B3	r3	c	b1
24.1	72	120.3	38	4	23.6

Re azové koleso s nábojom 1 3/4"x1 1/4" (28B-1-2-3)

pre val ekové re aze DIN 8187/ ISO R606

Oce C 43 / Fe 410*



1-radové 2-radové 3-radové

Obj. číslo Obj. číslo Obj. číslo

Na opýtanie	Na opýtanie	Na opýtanie
----------------	----------------	----------------

zubov 1-radové- simplex 2-radové- duplex 3-radové- triplex

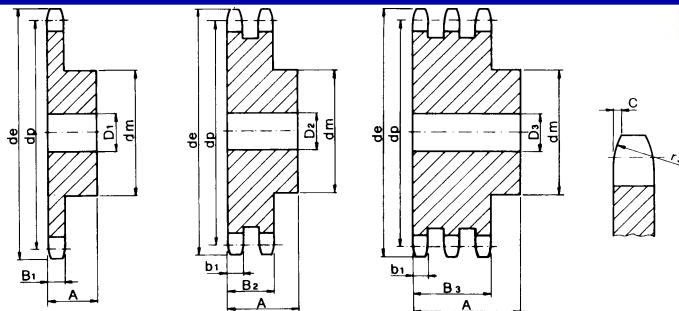
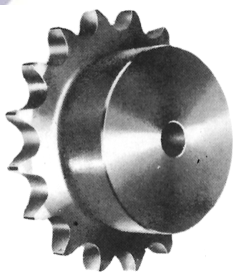
Obj. číslo	Obj. číslo	Obj. číslo	zubov	de	dp	A	dm	D1	A	dm	D2	A	dm	D3
8	132.0	116.15	70	74	25	120	74	30	180	74	30	180	74	30
9	146.0	129.96	70	88	25	120	88	30	180	88	30	180	88	30
10	160.0	143.85	70	100	25	120	100	30	180	100	30	180	100	30
11	174.0	157.77	70	112	25	120	112	30	180	112	30	180	112	30
12	188.0	171.74	70	125	25	120	125	30	180	125	30	180	125	30
13	204.0	185.75	70	125*	25	120	125*	30	180	125*	30	180	125*	30
14	218.0	199.76	70	125*	25	120	125*	30	180	125*	30	180	125*	30
15	232.0	213.79	70	125*	25	120	125*	30	180	145*	30	180	145*	30
16	246.0	227.84	75	160*	30	120	160*	30	180	160*	30	180	160*	30
17	260.0	241.90	75	160*	30	120	160*	30	180	160*	30	180	160*	30
18	274.0	255.98	75	160*	30	120	160*	30	180	160*	30	180	160*	30
19	289.0	270.06	75	160*	30	120	180*	30	180	180*	30	180	180*	30
20	303.0	284.15	75	160*	30	120	180*	30	180	180*	30	180	180*	30
21	317.0	298.24	75	160*	30	120	180*	30	180	180*	30	180	180*	40
22	331.0	312.34	75	160*	30	120	180*	30	-	-	-	-	-	-
23	345.0	326.44	75	160*	30	120	180*	30	180	180*	30	180	180*	40
24	359.0	340.55	75	160*	30	-	-	-	-	-	-	-	-	-
25	373.0	354.66	75	160*	30	120	180*	30	180	180*	30	180	180*	40
26	387.0	368.77	75	160*	30	120	180*	40	-	-	-	-	-	-
27	401.0	382.88	75	160*	30	-	-	-	-	-	-	-	-	-
28	416.0	397.00	75	160*	30	120	180*	40	-	-	-	-	-	-
30	444.0	425.24	75	160*	30	120	180*	40	180	180*	40	180	180*	40
32	472.0	453.49	75	180*	30	-	-	-	-	-	-	-	-	-
34	500.0	481.75	75	180*	30	-	-	-	-	-	-	-	-	-
35	514.0	495.88	75	180*	30	120	200*	40	-	-	-	-	-	-
36	529.0	510.01	75	180*	30	-	-	-	-	-	-	-	-	-
38	557.0	538.27	75	180*	30	120	200*	40	180	200*	40	180	200*	40
40	585.0	566.54	75	180*	30	120	200*	40	180	200*	40	180	200*	40

B1	B2	B3	r3	c	b1
29.4	88.4	148	44	5	28.8

Re azové koleso s nábojom 2" x 1 1/4" (32B -1 -2 -3)

pre val ekové re aze DIN 8187/ ISO R606

Oce C 43 / Fe 410*



1-radové 2-radové 3-radové

Obj. číslo Obj. číslo Obj. číslo

Na opýtanie	Na opýtanie	Na opýtanie
----------------	----------------	----------------

zubov 1-radové- simplex 2-radové- duplex 3-radové- triplex

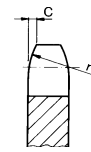
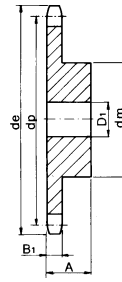
Obj. číslo	de	dp	A	dm	D1	A	dm	D2	A	dm	D3
8	152.0	132.74	80	85	30	120	85	30	180	85	30
9	168.0	148.54	80	100	30	120	100	30	180	100	30
10	184.0	164.39	80	115	30	120	115	30	180	115	30
11	200.0	181.31	80	125	30	120	125	35	180	125	35
12	216.0	196.29	80	133*	30	120	133*	35	180	133*	35
13	235.0	212.29	80	145*	30	120	145*	35	180	145*	35
14	251.0	228.29	80	145*	30	120	145*	35	180	145*	35
15	267.0	244.30	80	145*	30	120	160*	35	180	160*	35
16	283.0	260.40	90	160*	30	120	160*	40	180	160*	40
17	299.0	276.46	90	160*	30	120	180*	40	180	200*	40
18	315.0	292.55	90	160*	30	120	180*	40	180	200*	40
19	331.0	308.66	90	160*	30	120	200*	40	180	200*	40
20	347.0	324.71	90	180*	40	120	200*	40	180	200*	40
21	363.0	340.82	90	180*	40	120	200*	40	180	200*	40
22	379.0	356.98	90	180*	40	120	200*	40	-	-	-
23	396.0	373.08	90	180*	40	120	200*	40	180	200*	40
24	412.0	389.18	90	180*	40	120	200*	40	-	-	-
25	428.0	405.33	90	180*	40	120	200*	40	180	200*	40
26	444.0	421.44	90	180*	40	120	200*	40	-	-	-
28	476.0	453.69	90	180*	40	120	200*	40	-	-	-
30	508.0	486.00	90	180*	40	120	200*	40	180	200*	40
32	541.0	518.27	90	200*	40	-	-	-	-	-	-
35	589.0	566.71	90	200*	40	-	-	-	-	-	-
38	638.0	615.16	90	200*	40	-	-	-	-	-	-
40	670.0	647.47	90	200*	40	-	-	-	-	-	-

B1	B2	B3	r3	c	b1
29.4	87.4	146	51	6	28.8

Re azové koleso s kalenými zubmi

pre val ekové re aze DIN 8187/ ISO R606

Oce C 43



3/8" x 7/32" (06B-1)

Obj. číslo	zubov	D1	de	dp	dm	A
T 78914	13	10	43.5	39.80	28	25
T 79166	14	10	46.5	42.80	31	25
T 79167	15	10	49.5	45.81	34	25
T 79168	16	10	52.5	48.82	37	28
T 79169	17	10	55.5	51.83	40	28
T 79170	18	10	58.6	54.85	43	28
T 79171	19	10	61.6	57.87	45	28
T 79172	20	10	64.6	60.89	46	28
T 79173	21	12	67.6	63.91	48	28
T 79174	22	12	70.6	66.93	50	28
T 79175	23	12	73.7	69.95	52	28
T 79176	24	12	76.7	72.97	54	28
T 79177	25	12	79.7	76.00	57	28
T 79178	30	12	94.8	92.12	60	30

1/2" x 5/16" (08B-1)

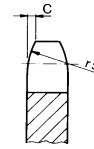
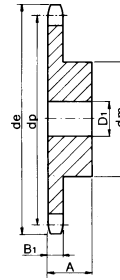
Obj. číslo	zubov	D1	de	dp	dm	A
T 79179	12	10	53.9	49.07	33	28
T 79190	13	10	57.9	53.06	37	28
T 79193	14	10	61.9	57.07	41	28
T 79194	15	10	65.9	61.09	45	28
T 79196	16	12	69.9	65.10	50	28
T 79198	17	12	74.0	69.11	52	28
T 79200	18	12	78.0	73.14	56	28
T 79201	19	12	82.0	77.16	60	28
T 79202	20	12	86.0	81.19	64	28
T 79203	21	14	90.1	85.22	68	28
T 79204	22	14	94.1	89.24	70	28
T 79205	23	14	98.1	93.27	70	28
T 79206	24	14	102.1	97.29	70	28
T 79208	25	14	106.2	101.33	70	28
T 79209	30	16	126.3	121.50	80	30

	B1	r3	C
06B-1	5.3	10	1.0
08B-1	7.2	13	1.3

Re azové koleso s kalenými zubmi

pre val ekové re aze DIN 8187/ ISO R606

Oce C 43



5/8" x 3/8" (10B-1)

1-radové- simplex

Obj. íslo	zubov	de	dp	A	dm	D1
T 79211	12	12	68.2	61.34	42	30
T 79218	13	12	73.2	66.32	47	30
T 79219	14	12	78.2	71.34	52	30
T 79220	15	12	83.2	76.36	57	30
T 79221	16	12	88.3	81.37	60	30
T 79222	17	12	93.3	86.39	60	30
T 79223	18	14	98.3	91.42	70	30
T 79224	19	14	103.3	96.45	70	30
T 79225	20	14	108.4	101.49	75	30
T 79226	21	16	113.4	106.52	75	30
T 79227	22	16	118.4	111.55	80	30
T 79228	23	16	123.5	116.58	80	30
T 79229	24	16	128.5	121.62	80	30
T 79230	25	16	133.6	126.66	80	30
T 79231	30	20	158.8	151.87	90	35

3/4" x 7/16" (12B-1)

1-radové- simplex

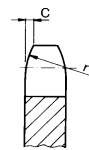
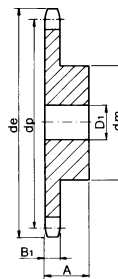
Obj. íslo	zubov	de	dp	A	dm	D1
T 79232	12	16	81.8	73.6	52	35
T 79233	13	16	87.8	79.59	58	35
T 79234	14	16	93.8	85.61	64	35
T 79235	15	16	99.8	91.63	70	35
T 79236	16	16	105.8	97.65	75	35
T 79237	17	16	111.9	103.67	80	35
T 79238	18	16	117.9	109.71	80	35
T 79239	19	16	123.9	115.75	80	35
T 79240	20	16	130.0	121.78	80	35
T 79241	21	20	136.0	127.82	90	40
T 79242	22	20	142.0	133.86	90	40
T 79243	23	20	148.1	139.90	90	40
T 79244	24	20	154.1	145.94	90	40
T 79245	25	20	160.2	152.00	90	40
T 79246	30	20	190.4	182.25	95	40

	B1	r3	C
10B-1	9.1	16	1.6
12B-1	11.1	19	2.0

Re azové koleso s kalenými zubmy

pre val ekové re aze DIN 8187/ ISO R606

Oce C 43



1" x 17.02" (16B-1)

1-radové- simplex

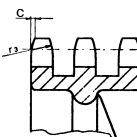
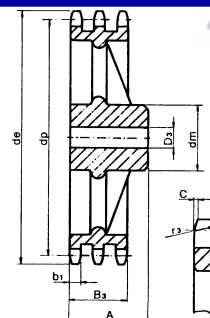
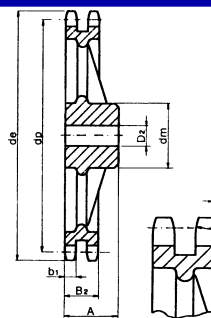
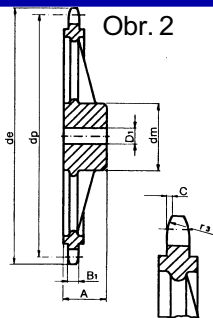
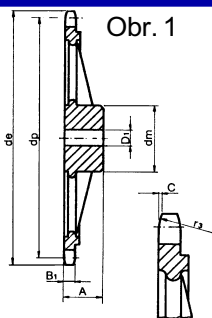
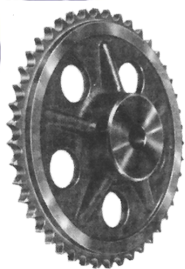
Obj. číslo	zubov	de	dp	A	dm	D1
T 79247	12	16	109.7	98.14	69	40
T 79249	13	16	117.7	106.12	78	40
T 79250	14	16	125.7	114.15	84	40
T 79251	15	16	133.7	122.17	92	40
T 79252	16	20	141.8	130.20	100	45
T 79253	17	20	149.8	138.22	100	45
T 79254	18	20	157.8	146.28	100	45
T 79255	19	20	165.9	154.33	100	45
T 79256	20	20	173.9	162.38	100	45
T 79257	21	20	182.0	170.43	110	50
T 79258	22	20	190.1	178.48	110	50
T 79259	23	20	198.1	186.53	110	50
T 79260	24	20	206.1	194.59	110	50
T 79261	25	20	214.2	202.65	110	50
T 79262	30	20	254.6	243.00	120	50

	B1	r3	C
16B-1	16.2	26	2.5

Re azové koleso s nábojom 3/8" x 7/32" (06B -1 -2 -3)

pre val ekové re aze DIN 8187/ ISO R606

Šedá liatina



1-radové 2-radové 3-radové

1-radové- simplex

2-radové- duplex

3-radové- triplex

Obj. číslo	Obj. číslo	Obj. číslo	zubov	de	dp	A	dm	D1	A	dm	D2	A	dm	D3
T 43793	-	-	38	119.0	115.34	32	70	20	-	-	-	-	-	-
T 43796	T 43797	T 43798	45	141.1	136.54	32	70	20	40	80	20	56	90	24
T 43799	T 43800	T 43801	57	177.5	172.91	32	70	20	40	80	20	56	90	24
T 43802	T 43803	T 43804	76	235.1	230.49	35	70	20	40	80	20	56	100	24
T 43805*	T 43806	T 43807	95	292.7	288.08	40	80	20	45	90	20	56	100	24
T 43808	T 43809	T 43810	114	350.3	345.68	40	80	20	45	90	20	56	100	24

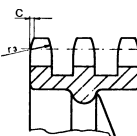
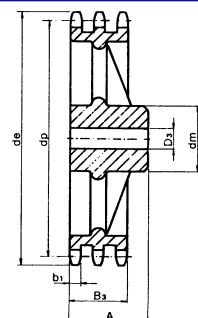
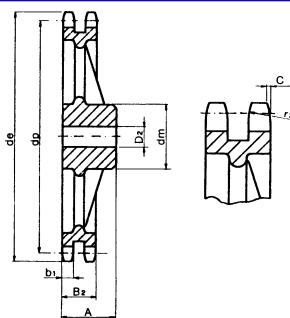
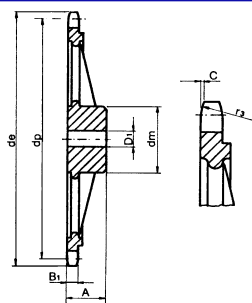
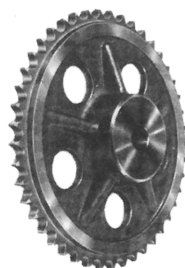
* Řetězové kolo jednořadé z=95, provedení viz.obrázek 2.

B1	B2	B3	r3	c	b1
5.3	15.4	25.6	10	1	5.2

Re azové koleso s nábojom 1/2" x 5/16" (08B -1 -2 -3)

pre val ekové re aze DIN 8187/ ISO R606

Šedá liatina



1-radové 2-radové 3-radové

1-radové- simplex

2-radové- duplex

3-radové- triplex

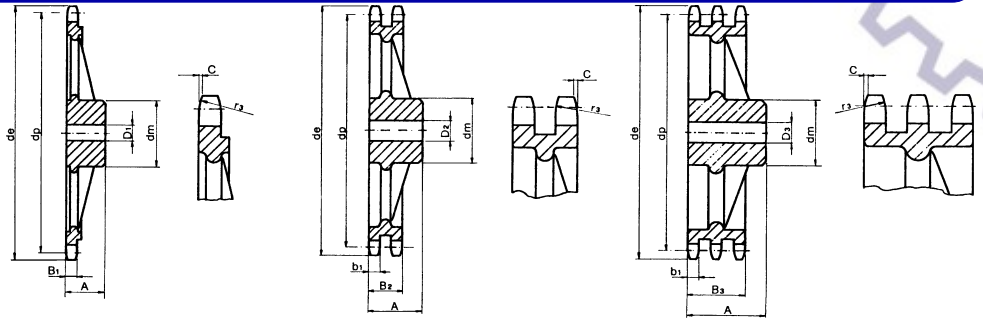
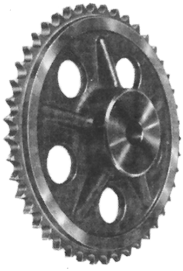
Obj. číslo	Obj. číslo	Obj. číslo	zubov	de	dp	A	dm	D1	A	dm	D2	A	dm	D3
T 43814	T 43815	T 43816	38	158.6	153.80	40	70	24	50	90	24	60	100	24
T 43817	T 43818	T 43819	45	188.6	182.07	40	70	24	50	90	24	60	100	24
T 43820	T 43821	T 43822	57	237.1	230.54	40	70	24	50	90	24	60	100	24
T 43823	T 43824	T 43825	76	313.9	307.33	40	80	24	56	100	24	60	100	24
T 43826	T 43827	T 43828	95	390.7	384.11	45	80	24	56	100	24	67	120	24
T 43829	T 43830	-	114	467.4	460.90	45	80	24	63	100	24	-	-	-

B1	B2	B3	r3	c	b1
7.2	21	34.9	13	1.3	7

Re azové koleso s nábojom 5/8" x 3/8" (10B -1 -2 -3)

pre val ekové re aze DIN 8187/ ISO R606

Šedá liatina



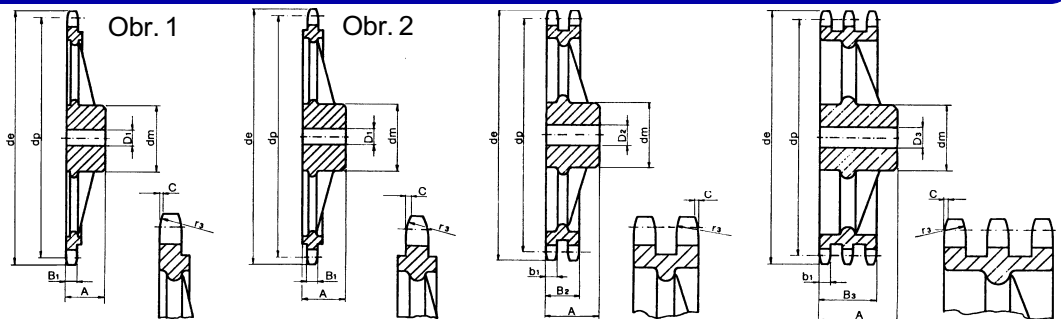
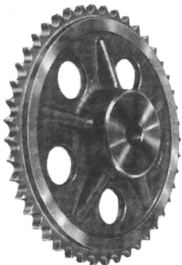
1-radové	2-radové	3-radové				1-radové- simplex			2-radové- duplex			3-radové- triplex		
Obj. číslo	Obj. číslo	Obj. číslo	zubov	de	dp	A	dm	D1	A	dm	D2	A	dm	D3
T 43832	T 43833	T 43834	38	199.1	192.24	40	80	24	50	100	30	60	100	32
T 43835	T 43836	T 43837	45	236.0	227.58	40	80	24	50	100	30	60	100	32
T 43838	T 43839	T 43840	57	296.6	288.18	45	90	24	56	100	30	63	100	32
T 43841	T 43842	T 43843	76	392.5	384.16	50	90	24	63	100	30	67	110	35
T 43844	T 43845	T 43846	95	488.5	480.14	56	100	24	63	110	30	70	125	35
T 43847	T 43848	T 43849	114	584.5	576.13	56	100	24	70	125	30	80	125	35

B1	B2	B3	r3	c	b1
9.1	25.5	42.1	16	1.6	9

Re azové koleso s nábojom 3/4" x 7/16" (12B -1 -2 -3)

pre val ekové re aze DIN 8187/ ISO R606

Šedá liatina



1-radové	2-radové	3-radové				1-radové- simplex			2-radové- duplex			3-radové- triplex		
Obj. číslo	Obj. číslo	Obj. číslo	zubov	de	dp	A	dm	D1	A	dm	D2	A	dm	D3
T 43850	T 43851	T 43852	38	238.9	230.69	56	100	24	63	110	25	70	115	30
T 43853	T 43854	T 43855	45	283.2	273.10	56	100	24	63	110	30	70	140	30
T 43856	T 43857	T 43858	57	355.9	345.81	56	100	30	63	120	30	70	140	40
T 43859	T 43860	T 43861	76	471.1	460.99	56	100	30	63	135	30	75	160	40
T 43862	T 43863	T 43864	95	586.2	576.17	65	100	30	70	135	30	82	170	40
T 43865*	T 43866	T 43867	114	701.4	691.36	65	100	30	70	135	45	82	170	50

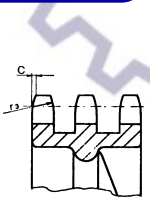
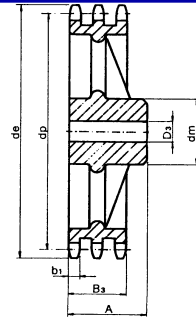
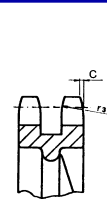
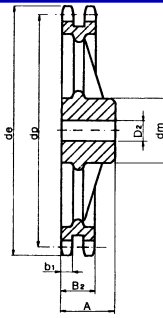
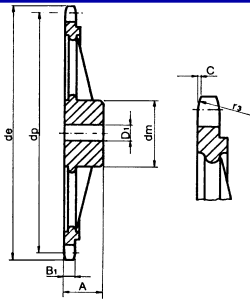
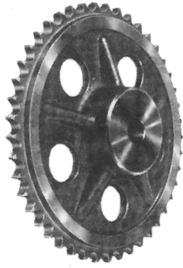
* Řetězové kolo jednořadé z=114, provedení viz. obrázek 2.

B1	B2	B3	r3	c	b1
11.1	30.3	49.8	19	2	10.8

Re azové koleso s nábojom 1"x17.02 mm (16B-1-2-3)

pre val ekové re aze DIN 8187/ ISO R606

Šedá liatina



1-radové 2-radové 3-radové

1-radové- simplex

2-radové- duplex

3-radové- triplex

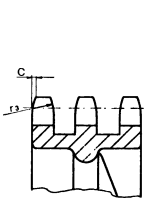
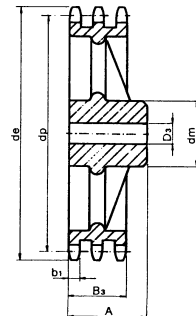
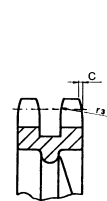
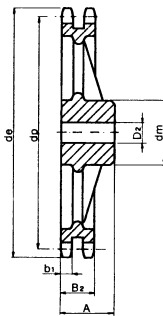
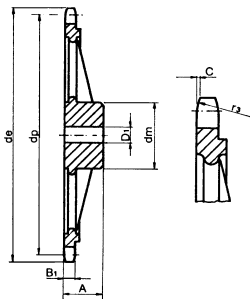
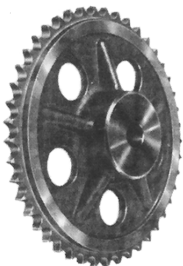
Obj. číslo	Obj. číslo	Obj. číslo	zubov	de	dp	A	dm	D1	A	dm	D2	A	dm	D3
T 43871	T 43872	T 43873	38	319.2	307.59	65	110	30	75	140	40	100	160	45
T 43874	T 43875	T 43876	45	377.9	364.12	70	125	30	75	150	40	100	160	45
T 43877	T 43878	T 43879	57	474.9	461.07	70	125	35	90	170	40	100	180	45
T 43880	T 43881	T 43882	76	628.4	614.65	80	140	35	95	175	40	110	200	45
T 43883	T 43884	T 43885	95	782.0	768.22	80	140	40	95	175	45	110	200	50
T 43886	T 43887	T 43888	114	935.6	921.81	80	150	40	95	175	45	115	200	50

B1	B2	B3	r3	c	b1
16.2	47.7	79.6	26	2.5	15.8

Re azové koleso s nábojom 1 1/4"x3/4" (20B -1 -2 -3)

pre val ekové re aze DIN 8187/ ISO R606

Šedá liatina



1-radové 2-radové 3-radové

1-radové- simplex

2-radové- duplex

3-radové- triplex

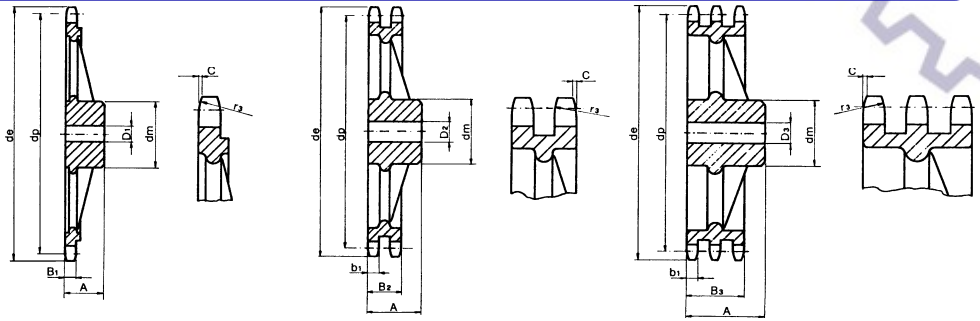
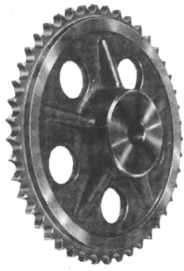
Obj. číslo	Obj. číslo	Obj. číslo	zubov	de	dp	A	dm	D1	A	dm	D2	A	dm	D3
T 43893	T 43894	T 43895	38	399.4	384.49	70	125	35	90	140	45	115	180	50
T 43899	T 43900	T 43901	57	592.3	576.36	80	135	40	100	170	50	130	180	50
T 43902	T 43903	T 64968	76	784.3	768.32	90	140	50	110	180	50	140	200	50

B1	B2	B3	r3	c	b1
18.5	54.6	91	32	3.5	18.2

Re azové koleso s nábojom 1 1/2" x 1" (24B -1 -2 -3)

pre val ekové re aze DIN 8187/ ISO R606

Šedá liatina



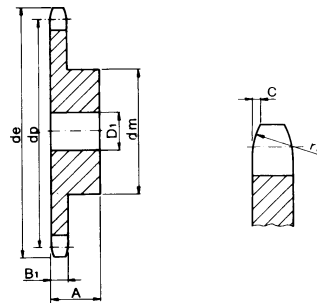
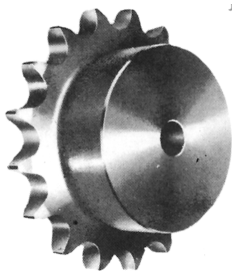
1-radové	2-radové	3-radové	zubov	de	dp	1-radové- simplex			2-radové- duplex			3-radové- triplex		
Obj. číslo	Obj. číslo	Obj. číslo				A	dm	D1	A	dm	D2	A	dm	D3
T 43908	T 43909	T 43910	38	476.5	461.39	90	140	45	100	180	45	150	200	50
T 43914	T 43915	T 43916	57	707.5	691.63	100	160	45	110	200	50	150	200	55
T 43917	T 43918	-	76	939.0	921.98	100	180	45	120	220	55	-	-	-

B1	B2	B3	r3	c	b1
24.1	72	120.3	38	4	23.6

Re azové koleso s nábojom 3/8" x 7/32" (06B-1)

pre val ekové re aze DIN 8187/ ISO R606

Nerez



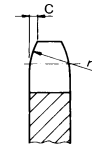
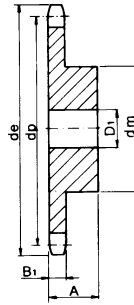
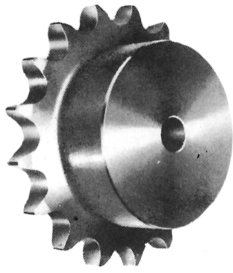
1-radové	Obj. číslo	zubov	de	dp	A	1-radové- simplex		
						dm		D1
	T 43920	15	49.5	45.81	25	34		10
	T 64969	16	52.5	48.82	28	37		10
	T 43923	17	55.5	51.83	28	40		10
	T 64970	18	58.6	54.85	28	43		10
	T 43924	19	61.6	57.87	28	45		10
	T 64971	20	64.6	60.89	28	46		10
	T 43926	21	67.6	63.91	28	48		12
	T 43927	23	73.7	69.95	28	52		12
	T 43928	25	79.7	76.00	28	57		12
	T 64972	30	94.8	92.12	28	60		12

B1	r3	c
5.3	10	1

Re azové koleso s nábojom 1/2" x 5/16" (08B-1)

pre val ekové re aze DIN 8187/ ISO R606

Nerez



1-radové

Obj. íslo

zubov

de

dp

A

1-radové- simplex

dm

D1

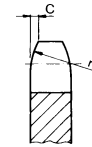
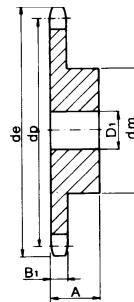
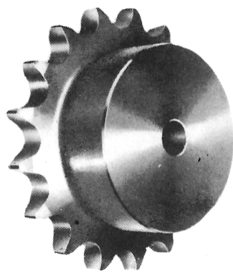
T 43929	13	57.9	53.06	28	37	10
T 64973	14	61.9	57.07	28	41	10
T 43930	15	65.9	61.09	28	45	10
T 43931	16	69.9	65.10	28	50	12
T 43933	17	74.0	69.11	28	52	12
T 43934	18	78.0	73.14	28	56	12
T 43935	19	82.0	77.16	28	60	12
T 43936	20	86.0	81.19	28	64	12
T 43937	21	90.1	85.22	28	68	14
T 43939	23	98.1	93.27	28	70	14
T 43940	25	106.2	101.33	28	70	14

B1	r3	c
7.2	13	1.3

Re azové koleso s nábojom 5/8" x 3/8" (10B-1)

pre val ekové re aze DIN 8187/ ISO R606

Nerez



1-radové

Obj. íslo

zubov

de

dp

A

1-radové- simplex

dm

D1

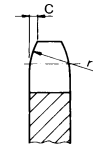
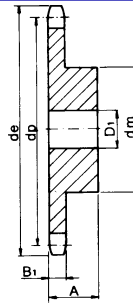
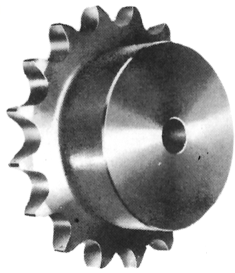
T 43943	15	83.2	76.36	30	57	12
T 64974	16	88.3	81.37	30	60	12
T 43944	17	93.3	86.39	30	60	12
T 64975	18	98.3	91.42	30	70	14
T 43945	19	103.3	96.45	30	70	14
T 64976	20	108.4	101.49	30	75	14
T 43947	21	113.4	106.32	30	75	16
T 43948	23	123.5	116.58	30	80	16
T 43950	25	133.6	126.66	30	80	16
T 43951	30	158.8	151.87	35	90	20

B1	r3	c
9.1	16	1.6

Re azové koleso s nábojom 3/4" x 7/16" (12B-1)

pre val ekové re aze DIN 8187/ ISO R606

Nerez



1-radové

Obj. číslo

zubov

de

dp

A

1-radové- simplex

dm

D1

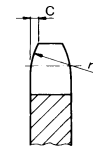
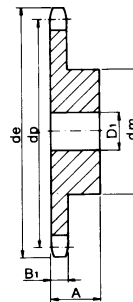
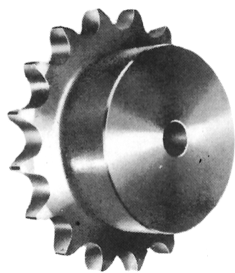
T 43952	13	87.8	79.59	35	58	16
T 64977	14	93.8	85.61	35	64	16
T 43953	15	99.8	91.63	35	70	16
T 64978	16	105.8	97.65	35	75	16
T 43954	17	111.9	103.67	35	80	16
T 64979	18	117.9	109.71	35	80	16
T 43955	19	123.9	115.75	35	80	16
T 64980	20	130.0	121.78	35	80	16
T 43956	21	136.0	127.82	40	90	20
T 43957	23	148.1	139.90	40	90	20
T 43958	25	160.2	152.00	40	90	20

B1	r3	c
11.1	19	2

Re azové koleso s nábojom 1" x 17.02 mm (16B-1)

pre val ekové re aze DIN 8187/ ISO R606

Nerez



1-radové

Obj. číslo

zubov

de

dp

A

1-radové- simplex

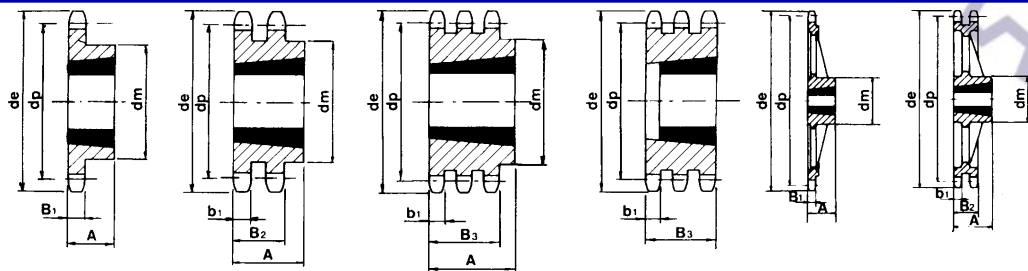
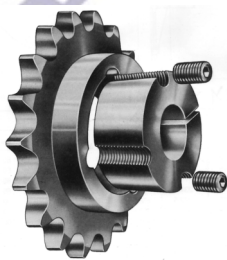
dm

D1

T 43959	13	117.0	106.12	40	78	16
T 64982	14	125.7	114.15	40	84	16
T 43961	15	133.7	122.17	40	92	16
T 64983	16	141.8	130.20	45	100	20
T 43962	17	149.8	138.22	45	100	20
T 64984	18	157.8	146.28	45	100	20
T 43963	19	165.9	154.33	45	100	20
T 64985	20	173.9	162.38	45	100	20
T 43964	21	182.0	170.43	50	110	20

B1	r3	c
16.2	26	2.5

Re azové koleso s nábojom 3/8" x 7/32" (06B -1 - 2 -3) pre Taper Lock® pre val ekové re aze DIN 8187/ ISO R606



Prevedenie 1 Prevedenie 2 Prevedenie 4 Prevedenie 5 Prevedenie 6 Prevedenie 7

1-radové

Obj. číslo	zubov	de	dp	Puzdro Taper Lock®	Prevedenie	dm	A
T 43966	17	55.5	51.83	1008	1	45	22
T 64986	18	58.6	54.85	1008	1	45	22
T 43967	19	61.6	57.86	1008	1	45	22
T 64987	20	64.6	60.89	1008	1	46	22
T 43968	21	67.6	63.90	1008	1	46	22
T 64988	22	70.6	66.93	1108	1	55	22
T 43969	23	73.7	69.95	1210	1	63	25
T 64989	24	76.7	72.97	1210	1	63	25
T 43970	25	79.7	75.99	1210	1	63	25
T 43971	27	85.7	82.04	1210	1	63	25
T 43972	30	94.8	91.12	1210	1	63	25
T 43973	38	119.0	115.34	1210	1	70	25
T 43975	57	177.5	172.91	1210	6	83	25
T 43976	76	235.1	230.49	1210	6	83	25

2-radové

T 44040	17	55.5	51.83	1008	2	41	22
T 44041	19	61.6	57.86	1008	2	46	22
T 44042	21	67.6	63.90	1008	2	49	22
T 44043	23	73.7	69.95	1210	2	59	25
T 44044	25	79.7	75.99	1210	2	64	25
T 44045	27	85.7	82.04	1210	2	70	25
T 44046	30	94.8	91.12	1210	2	75	25
T 44047	38	119.0	115.34	1610	2	80	25
T 44049	57	177.5	172.91	1610	7	92	25
T 44050	76	235.1	230.49	1610	7	92	25

3-radové

T 65011	17	55.5	51.83	1008	5	-	25.6
T 65012	19	61.6	57.86	1008	5	-	25.6
T 65013	21	67.6	63.90	1008	5	-	25.6
T 65014	23	73.7	69.95	1210	5	-	25.6
T 65015	25	79.7	75.99	1210	5	-	25.6
T 65016	27	85.7	82.04	1210	5	-	25.6
T 65017	30	94.8	91.12	1615	4	79	38.0
T 65018	38	119.0	115.34	1615	4	90	38.0

B1	B2	B3	r3	c	b1
5.3	15.4	25.6	10	1	5.2

Info:

Prevedenie 1, 2, 4, 5:

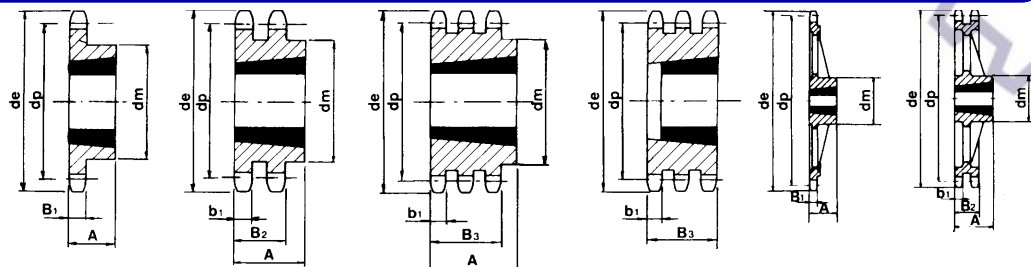
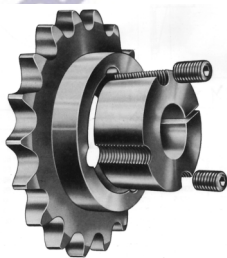
Ocel C 43

Prevedenie 6, 7:

Šedá liatina

Upínacie púzdra Taper Lock® na strane 11.24 - 11.28

Re azové koleso s nábojom 1/2" x 5/16" (08B -1 -2 -3) pre Taper Lock® pre val ekové re aze DIN 8187/ ISO R606



Prevedenie 1 Prevedenie 2 Prevedenie 4 Prevedenie 5 Prevedenie 6 Prevedenie 7

1-radové

Obj. číslo	zubov	de	dp	Puzdro Taper Lock®	Prevedenie	dm	A
T 43979	15	66.5	61.80	1008	1	45	22
T 64990	16	69.9	65.10	1108	1	50	22
T 43980	17	74.5	69.11	1210	1	60	25
T 64991	18	78.0	73.14	1210	1	60	25
T 43981	19	82.5	77.15	1210	1	63	25
T 64992	20	86.0	81.19	1610	1	67	25
T 43982	21	90.6	85.21	1610	1	71	25
T 64993	22	94.1	89.24	1610	1	71	25
T 43983	23	98.7	93.26	1610	1	76	25
T 64994	24	102.1	97.29	1610	1	76	25
T 43984	25	106.7	101.32	1610	1	76	25
T 43985	27	114.8	109.39	1610	1	76	25
T 43986	30	126.9	121.49	2012	1	90	32
T 43987	38	159.2	153.79	2012	1	90	32
T 43989	57	237.1	230.54	2012	6	111	32
T 43990	76	313.9	307.33	2012	6	111	32

2-radové

T 44053	15	66.5	61.80	1008	2	46	22
T 44054	17	74.5	69.11	1210	2	56	25
T 44055	19	82.5	77.15	1210	2	62	25
T 44056	21	90.6	85.21	1610	2	70	25
T 44057	23	98.7	93.26	1610	2	79	25
T 44058	25	106.7	101.32	2012	2	87	32
T 44059	27	114.8	109.39	2012	2	87	32
T 44060	30	126.9	121.49	2012	2	87	32
T 44061	38	159.2	153.79	2012	2	100	32
T 44063	57	237.1	230.54	2012	7	111	32
T 44064	76	313.9	307.33	2012	7	111	32

3-radové

T 65019	15	66.5	61.80	1008	5	-	34.9
T 65020	17	74.5	69.11	1210	5	-	34.9
T 65021	19	82.5	77.15	1215	4	62	38.0
T 65022	21	90.6	85.21	1615	4	70	38.0
T 65024	23	98.7	93.26	1615	4	70	38.0
T 65025	25	106.7	101.32	2012	5	-	34.9
T 65026	27	114.8	109.39	2012	5	-	34.9
T 65027	30	126.9	121.49	2012	5	-	34.9
T 65028	38	159.2	153.79	2012	5	-	34.9

B1	B2	B3	r3	c	b1
7.2	21	34.9	13	1.3	7

Info:

Prevedenie 1, 2, 4, 5:

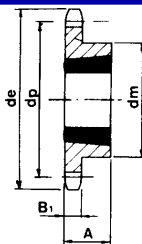
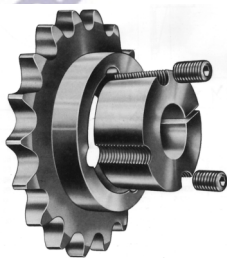
Ocel C 43

Prevedenie 6, 7:

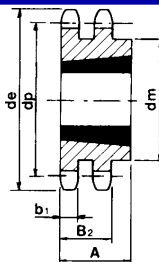
Šedá liatina

Upínacie púzdra Taper Lock® na strane 11.24 - 11.28

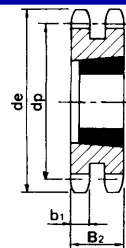
Re azové koleso s nábojom 5/8" x 3/8" (10B -1 -2 -3) pre Taper Lock® pre val ekové re aze DIN 8187/ ISO R606



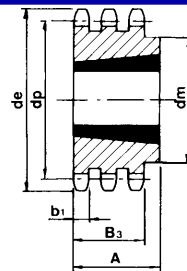
Prevedenie 1



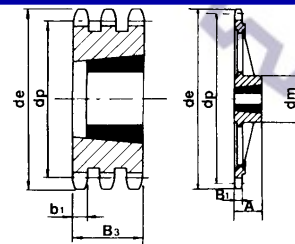
Prevedenie 2



Prevedenie 4



Prevedenie 5



Prevedenie 6

1-radové

Obj. číslo	zubov	de	dp	Puzdro Taper Lock®	Prevedenie	dm	A
T 43993	13	73.2	66.33	1008	1	47	22
T 43994	15	83.2	76.35	1210	1	60	25
T 64995	16	88.3	81.37	1210	1	63	25
T 43995	17	93.3	86.39	1610	1	71	25
T 64996	18	98.3	91.42	1610	1	71	25
T 43996	19	103.3	96.44	1610	1	75	25
T 64997	20	108.4	101.49	1610	1	76	25
T 43997	21	113.4	106.51	1610	1	76	25
T 64998	22	118.4	111.55	1610	1	76	25
T 43998	23	123.5	116.58	1610	1	76	25
T 64999	24	128.5	121.62	2012	1	90	32
T 43999	25	133.6	126.66	2012	1	90	32
T 44000	27	143.6	136.74	2012	1	90	32
T 44001	30	158.8	151.87	2012	1	90	32
T 44002	38	199.1	192.23	2012	1	100	32
T 44004	57	296.6	288.18	2012	6	111	32
T 44005	76	392.5	384.16	2012	6	111	32

2-radové

T 44067	15	83.2	76.35	1210	3	-	25.5
T 44068	17	93.3	86.39	1610	3	-	25.5
T 44069	19	103.3	96.44	1610	3	-	25.5
T 44070	21	113.4	106.51	1610	3	-	25.5
T 44071	23	123.5	116.58	1610	3	-	25.5
T 44072	25	133.6	126.66	2012	2	90	32.0
T 44073	27	143.6	136.74	2012	2	90	32.0
T 44074	30	158.8	151.87	2012	2	90	32.0

3-radové

T 65029	15	83.2	76.35	1215	5	-	42.1
T 65030	17	93.3	86.39	1215	5	-	42.1
T 65031	19	103.3	96.44	1615	5	-	42.1
T 65032	21	113.4	106.51	1615	5	-	42.1
T 65033	23	123.5	116.58	2012	5	-	42.1
T 65034	25	133.6	126.66	2517	4	105	44.0
T 65035	27	143.6	136.74	2517	4	110	44.0
T 65036	30	158.8	151.87	2517	4	120	44.0

B1	B2	B3	r3	c	b1
9.1	25.5	42.1	16	1.6	9

Info:

Prevedenie 1-5

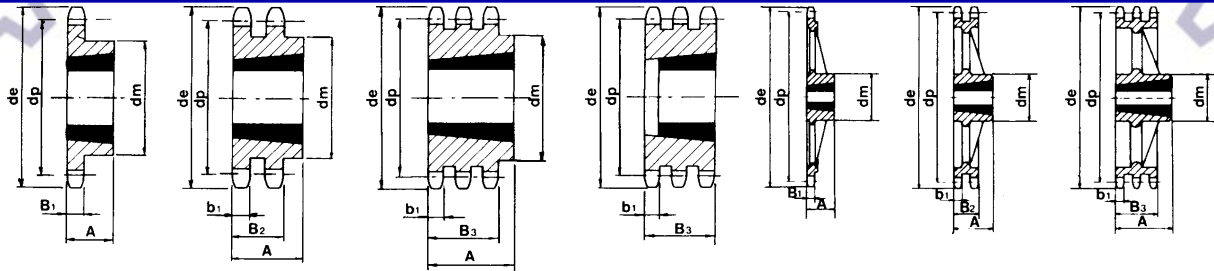
Ocel C 43

Prevedenie 6, 7:

Šedá liatina

Upínacie puzdra Taper Lock® na strane 11.24 - 11.28

Re azové koleso s nábojom 3/4" x 7/16" (12B -1 -2 -3) pre Taper Lock® pre val ekové re aze DIN 8187/ ISO R606



Prevedenie 1 Prevedenie 2 Prevedenie 4 Prevedenie 5 Prevedenie 6 Prevedenie 7 Prevedenie 8

1-radové

Obj. číslo	zubov	de	dp	Púzdro Taper Lock®	Prevedenie	dm	A
T 44008	13	87.8	79.60	1210	1	60	25
T 44009	15	99.8	91.62	1610	1	70	25
T 65000	16	105.8	97.65	1610	1	71	25
T 44010	17	111.9	103.67	1610	1	76	25
T 65001	18	117.9	109.71	2012	1	90	32
T 44011	19	123.9	115.73	2012	1	90	32
T 65002	20	130.0	121.78	2012	1	90	32
T 44012	21	136.0	127.81	2517	1	102	44
T 65003	22	142.0	133.86	2517	1	108	44
T 44013	23	148.1	139.90	2517	1	108	44
T 65004	24	154.1	145.94	2517	1	108	44
T 44014	25	160.2	151.99	2517	1	108	44
T 44015	27	172.3	164.09	2517	1	108	44
T 44016	30	190.4	182.24	2517	1	108	44
T 44017	38	238.9	230.69	2517	1	108	44
T 44019	57	355.9	345.81	2517	6	124	44
T 44020	76	471.1	460.99	2517	6	124	44

2-radové

T 44076	15	99.8	91.62	1615	2	71	38
T 44077	17	111.9	103.67	1615	2	80	38
T 44078	19	123.9	115.73	2012	2	90	32
T 44079	21	136.0	127.81	2517	2	108	44
T 44080	23	148.1	139.90	2517	2	108	44
T 44081	25	160.2	151.99	2517	2	108	44
T 44082	27	172.3	164.09	2517	2	108	44
T 44083	30	190.4	182.24	2517	2	108	44
T 44084	38	238.9	230.69	3020	2	140	51
T 44086	57	355.9	345.81	3020	7	160	51
T 44087	76	471.1	460.99	3020	7	160	51

3-radové

T 44104	15	99.8	91.62	1615	5	-	49.8
T 44105	17	111.9	103.67	1615	5	-	49.8
T 44106	19	123.9	115.73	2012	5	-	49.8
T 44107	21	136.0	127.81	2517	5	-	49.8
T 44108	23	148.1	139.90	2517	5	-	49.8
T 44109	25	160.2	151.99	2517	5	-	49.8
T 44110	27	172.3	164.09	3020	4	140	51.0
T 44111	30	190.4	182.24	3020	4	140	51.0
T 44112	38	238.9	230.69	3020	4	140	51.0
T 44114	57	355.9	345.81	3020	8	160	51.0

B1	B2	B3	r3	c	b1
11.1	30.3	49.8	19	2	10.8

Info:

Prevedenie 1, 2, 4, 5:

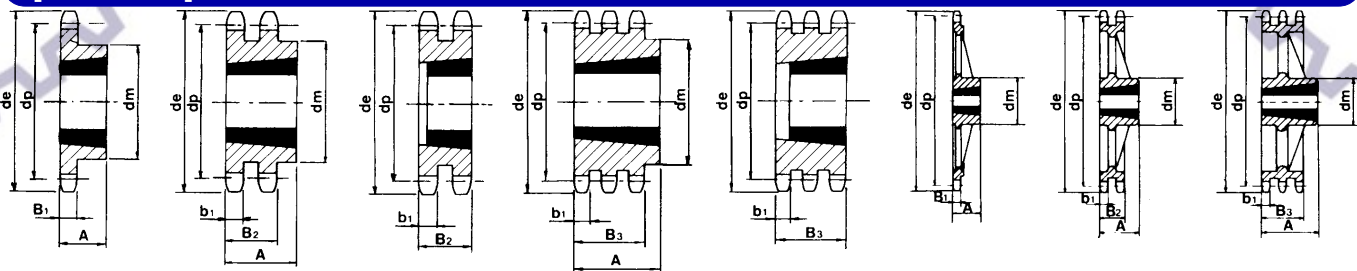
Ocel C 43

Prevedenie 6-8:

Šedá liatina

Upínacie púzdra Taper Lock® na strane 11.24 - 11.28

Re azové koleso s nábojom 1" x 17.02 mm (16B -1 -2 -3) pre Taper Lock® pre val ekové re aze DIN 8187/ ISO R606



Prevedenie 1 Prevedenie 2 Prevedenie 3 Prevedenie 4 Prevedenie 5 Prevedenie 6 Prevedenie 7 Prevedenie 8

1-radové

Obj. číslo	zubov	de	dp	Puzdro Taper Lock®	Prevedenie	dm	A
T 44023	13	117.7	106.13	1615	1	73	38
T 44024	15	133.7	122.16	1615	1	76	38
T 65005	16	141.8	130.20	2012	1	90	32
T 44025	17	149.8	138.23	2012	1	90	32
T 65006	18	157.8	146.28	2517	1	108	44
T 44026	19	165.9	154.31	2517	1	108	44
T 65007	20	173.9	162.38	2517	1	110	44
T 44028	21	182.0	170.42	2517	1	110	44
T 65008	22	190.1	178.48	2517	1	110	44
T 44029	23	198.1	186.53	2517	1	110	44
T 65009	24	206.2	194.59	2517	1	110	44
T 44031	25	214.2	202.66	2517	1	110	44
T 44032	27	230.4	218.79	2517	1	110	44
T 44033	30	254.6	242.99	2517	1	120	44
T 44034	38	319.2	307.59	3020	6	160	51
T 44036	57	474.9	461.07	3020	6	160	51
T 44037	76	628.4	614.65	3020	6	160	51

2-radové

T 44090	15	133.7	122.16	2012	3	-	47.7
T 44091	17	149.8	138.23	2517	3	-	47.7
T 44092	19	165.9	154.31	2517	3	-	47.7
T 44093	21	182.0	170.42	3020	2	140	51.0
T 44094	23	198.1	186.53	3020	2	140	51.0
T 44095	25	214.2	202.66	3020	2	140	51.0
T 44096	27	230.4	218.79	3020	2	140	51.0
T 44097	30	254.6	242.99	3030	2	140	76.0
T 44098	38	319.2	307.59	3030	7	160	76.0
T 44100	57	474.9	461.65	3535	7	178	89.0

3-radové

T 44118	17	149.8	138.23	2517	5	-	79.6
T 44119	19	165.9	154.31	3030	5	-	79.6
T 44120	21	182.0	170.42	3030	5	-	79.6
T 44121	23	198.1	186.53	3535	4	159	89.0
T 44122	25	214.2	202.66	3535	4	175	89.0
T 44123	27	230.4	218.79	3535	4	175	89.0
T 44124	30	254.6	242.99	3535	4	175	89.0
T 44125	38	319.2	307.59	3535	8	178	89.0
T 44127	57	474.9	461.07	4040	8	216	102.0

B1	B2	B3	r3	c	b1
16.2	47.7	79.6	26	2.5	15.8

Info:

Prevedenie 1-5:
Prevedenie 6-8:

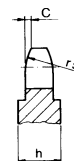
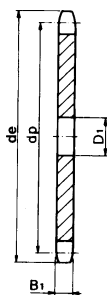
Ocel C 43
Šedá liatina

Upínacie puzdra Taper Lock® na strane 11.24 - 11.28

Re azové koleso bez náboja 5 x 2.5 mm (03-1)

pre val ekové re aze DIN 8187/ ISO R606

Oce Fe 50



1-radové

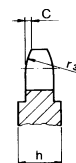
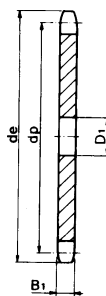
Obj. číslo	zubov	de	dp	D1	Obj. číslo	zubov	de	dp	D1
Na opýtanie	8	14.8	13.06	4	Na opýtanie	40	65.5	63.73	8
	9	16.4	14.62	4		42	68.7	66.91	8
	10	17.9	16.18	4		44	71.8	70.09	8
	11	19.5	17.75	5		45	73.4	71.68	8
	12	21.1	19.32	5		46	75.0	73.27	8
	13	22.6	20.89	5		48	78.2	76.45	8
	14	24.2	22.47	5		50	81.4	79.63	8
	15	25.8	24.04	5		52	84.6	82.81	10
	16	27.4	25.63	6		54	87.7	85.97	10
	17	29.0	27.20	6		55	89.3	87.58	10
	18	30.5	28.79	6		56	90.9	89.17	10
	19	32.1	30.38	6		57	92.6	90.76	10
	20	33.7	31.96	6		58	94.1	92.35	10
	21	35.3	33.54	8		60	97.3	95.53	10
	22	36.9	35.13	8		62	100.5	98.72	12
	23	38.5	36.72	8		65	105.2	103.49	12
	24	40.1	38.30	8		66	106.8	105.08	12
	25	41.6	39.89	8		70	113.2	111.44	12
	26	43.2	41.48	8		75	121.2	119.40	12
	27	44.8	43.07	8		76	122.7	120.99	12
	28	46.4	44.65	8		80	129.1	127.35	12
	30	49.6	47.83	8		85	137.1	135.31	14
	32	52.8	51.01	8		90	145.0	143.27	14
	33	54.4	52.60	8		95	153.0	151.22	14
	34	55.9	54.19	8		100	160.9	159.18	14
	35	57.5	55.78	8		110	176.8	175.09	14
	36	59.1	57.37	8		114	183.2	181.46	14
	37	60.7	58.96	8		120	192.8	191.01	14
	38	62.3	60.54	8		125	200.7	198.96	14

B1	r3	c	h
2.3	5	0.4	$z \geq 51 = 4$

Re azové koleso bez náboja 6 x 2.8 mm (04-1)

pre val ekové re aze DIN 8187/ ISO R606

Oce Fe 50



1-radové

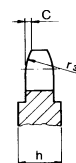
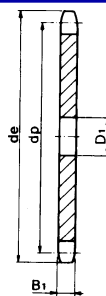
Obj. číslo	zubov	de	dp	D1	Obj. číslo	zubov	de	dp	D1
T 14139	8	18.0	15.67	5	T 14168	37	73.1	70.75	10
T 14140	9	19.9	17.54	5	T 14169	38	75.0	72.66	10
T 14141	10	21.7	19.42	6	T 14171	40	78.9	76.47	10
T 14142	11	23.6	21.30	6	T 14173	42	82.7	80.28	12
T 14143	12	25.4	23.18	6	T 14176	45	88.5	86.01	12
T 14144	13	27.3	25.05	8	T 14179	48	94.2	91.74	12
T 14145	14	29.2	26.96	8	T 14181	50	98.0	95.55	12
T 14146	15	31.1	28.86	8	T 14183	52	101.8	99.37	12
T 14147	16	33.0	30.76	8	T 14185	54	105.6	103.17	12
T 14148	17	35.0	32.65	8	T 14186	55	107.6	105.08	12
T 14149	18	36.9	34.55	8	T 14187	56	109.5	107.00	12
T 14150	19	38.8	36.44	8	T 14188	57	111.4	108.93	12
T 14151	20	40.7	38.44	8	T 14189	58	113.3	110.82	12
T 14152	21	42.6	40.25	8	T 14191	60	117.1	114.62	12
T 14153	22	44.5	42.16	8	T 14192	62	120.9	118.45	16
T 14154	23	46.4	44.06	8	T 14194	64	124.7	122.27	16
T 14155	24	48.3	45.96	8	T 14195	65	126.6	124.18	16
T 14156	25	50.2	47.87	8	T 14196	66	128.5	126.09	16
T 14157	26	52.1	49.77	8	T 14198	70	136.2	133.73	16
T 14158	27	54.0	51.67	8	T 14201	76	147.6	145.19	16
T 14159	28	55.9	53.58	8	T 14202	80	155.3	152.82	16
T 14161	30	59.8	57.42	8	T 65037	85	164.8	162.37	16
T 14163	32	63.6	61.21	10	T 65038	90	174.4	171.92	16
T 14164	33	65.5	63.11	10	T 14203	95	183.9	181.47	16
T 14165	34	67.4	65.02	10	T 14204	100	193.5	191.01	16
T 14166	35	69.3	66.93	10	T 14206	120	231.7	229.20	16
T 14167	36	71.2	68.84	10	T 14207	125	241.2	238.75	16

B1	r3	c	h
2.6	6	0.6	$z \geq 51 = 4$

Re azové koleso bez náboja 8 x 3 mm (05B-1)

pre val ekové re aze DIN 8187/ ISO R606

Oce Fe 50



1-radové

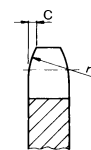
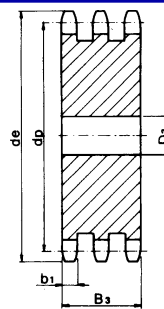
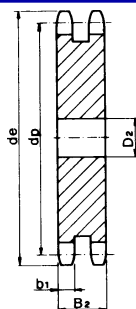
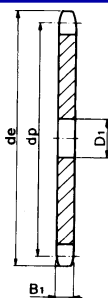
Obj. číslo	zubov	de	dp	D1	Obj. číslo	zubov	de	dp	D1
T 14208	8	23.4	20.90	6	T 14237	37	97.7	94.33	12
T 14209	9	25.9	23.39	6	T 14238	38	100.2	96.88	12
T 14210	10	28.4	25.89	8	T 14239	39	102.7	99.42	12
T 14211	11	31.0	28.39	8	T 14240	40	105.2	101.97	12
T 14212	12	33.7	30.91	8	T 14242	42	111.0	107.05	12
T 14213	13	36.7	33.42	8	T 14244	44	116.1	112.14	12
T 14214	14	39.2	35.95	8	T 14245	45	118.6	114.69	12
T 14215	15	41.7	38.48	8	T 14264	46	121.2	117.23	12
T 14216	16	44.2	41.01	8	T 14266	48	126.4	122.32	12
T 14217	17	46.7	43.53	8	T 14268	50	131.5	127.41	12
T 14218	18	49.2	46.07	8	T 14270	52	136.6	132.49	16
T 14219	19	51.7	48.61	8	T 14272	54	141.7	137.59	16
T 14220	20	54.2	51.14	8	T 14273	55	144.2	140.13	16
T 14221	21	57.2	53.67	10	T 14275	57	149.3	145.22	16
T 14222	22	59.4	56.21	10	T 14276	58	151.9	147.77	16
T 14223	23	62.2	58.75	10	T 14278	60	157.1	152.85	16
T 14224	24	64.7	61.29	10	T 14279	62	162.2	157.95	16
T 14225	25	67.2	63.83	10	T 14281	64	167.3	163.04	16
T 14226	26	69.7	66.37	10	T 14282	65	169.8	165.58	16
T 14227	27	72.3	68.91	10	T 14285	70	182.6	178.31	16
T 14228	28	74.7	71.45	10	T 14287	75	195.3	191.04	20
T 14229	29	77.2	73.99	10	T 14288	76	197.9	193.59	20
T 14230	30	80.2	76.53	10	T 14289	80	208.1	203.77	20
T 14231	31	82.7	79.08	10	T 65039	85	220.8	216.50	20
T 14232	32	85.2	81.61	10	T 65040	90	233.6	229.23	20
T 14233	33	87.7	84.16	10	T 14290	95	246.3	241.96	20
T 14234	34	90.2	86.70	10	T 14292	114	294.8	290.33	20
T 14235	35	92.7	89.24	10	T 14293	120	310.1	305.61	20
T 14236	36	95.2	91.79	10	T 14294	125	322.8	318.34	20

B1	r3	c	h
2.8	8	0.8	$z \geq 46 = 4$

Re azové koleso bez náboja 3/8" x 7/32" (06B -1 -2 -3)

pre val ekové re aze DIN 8187/ ISO R606

Oce C 43



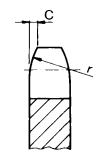
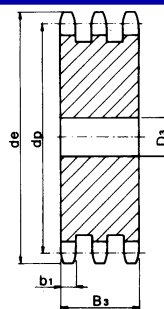
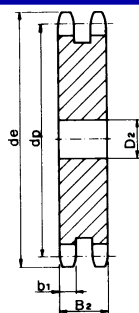
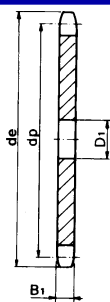
1-radové			2-radové			3-radové		
Obj. íslo	Obj. íslo	Obj. íslo	zubov	de	dp	D1	D2	D3
T 13071	-	T 14504	8	28.6	24.89	6	-	8
T 09579	-	T 65042	9	31.5	27.85	8	-	8
T 08514	-	-	10	34.5	30.82	8	-	-
T 13072	T 14298	T 14507	11	37.5	33.80	8	10	12
T 08515	T 14299	T 14508	12	40.5	36.80	8	10	12
T 11735	T 14300	T 14509	13	43.5	39.80	8	10	12
T 08516	T 14301	T 14510	14	46.5	42.80	8	10	12
T 13073	T 14302	T 14511	15	49.5	45.81	8	10	12
T 13074	T 14303	T 14512	16	52.5	48.82	10	12	12
T 08517	T 14304	T 14513	17	55.5	51.83	10	12	12
T 13075	T 14305	T 14514	18	58.6	54.85	10	12	12
T 13076	T 14306	T 14515	19	61.6	57.87	10	12	12
T 08518	T 14307	T 14516	20	64.6	60.89	10	12	12
T 13077	T 14308	T 14517	21	67.6	63.91	10	12	16
T 13078	T 14309	T 14518	22	70.6	66.93	10	12	16
T 13079	T 14310	T 14519	23	73.7	69.95	10	12	16
T 08519	T 14311	T 14520	24	76.7	72.97	10	12	16
T 13080	T 14312	T 14521	25	79.7	76.00	10	12	16
T 13081	T 14313	T 14522	26	82.7	79.02	10	16	16
T 08520	T 14314	T 14523	27	85.7	82.04	10	16	16
T 13082	T 14315	T 14524	28	88.8	85.07	10	16	16
T 13083	T 14316	T 14525	29	91.8	88.09	10	16	16
T 13084	T 14317	T 14526	30	94.8	91.12	10	16	16
T 08521	T 14318	T 14527	31	97.9	94.15	12	16	16
T 13085	T 14319	T 14528	32	100.9	97.17	12	16	16
T 13086	T 14320	-	33	103.9	100.20	12	16	-
T 13087	T 14321	T 14530	34	106.9	103.23	12	16	16
T 13088	T 14322	T 14531	35	110.0	106.26	12	16	16
T 13089	T 14323	T 14532	36	113.0	109.29	12	16	20
T 13090	T 14324	-	37	116.0	112.32	12	16	-
T 13091	T 14325	T 14534	38	119.0	115.34	12	16	20
T 13092	T 65041	-	39	122.1	118.37	12	16	-
T 13093	T 14327	T 14536	40	125.1	121.40	12	16	20
T 13094	T 14328	-	41	129.0	124.43	16	20	-
T 13095	T 14329	T 14538	42	132.1	127.46	16	20	20
T 13096	T 14330	-	43	135.1	130.49	16	20	-

B1	B2	B3	r3	c	b1
5.3	15.4	25.6	10	1	5.2

Re azové koleso bez náboja 3/8" x 7/32" (06B -1 -2 -3)

pre val ekové re aze DIN 8187/ ISO R606

Oce C 43



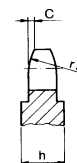
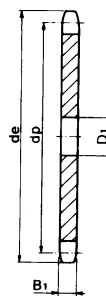
1-radové			2-radové			3-radové		
Obj. číslo	Obj. číslo	Obj. číslo	zubov	de	dp	D1	D2	D3
T 13097	T 65043	T 14579	44	138.1	133.52	16	20	20
T 13098	T 14332	T 14580	45	141.1	136.54	16	20	20
T 13099	T 14333	-	46	144.2	139.58	16	20	20
T 13100	-	-	47	147.2	142.61	16	-	-
T 13101	T 14335	T 14583	48	150.2	145.64	16	20	20
T 13102	T 14336	-	49	153.3	148.66	16	20	-
T 13103	T 14337	T 14585	50	156.3	151.69	20	20	20
T 13104	T 14338	-	51	159.3	154.72	20	20	-
T 13105	T 14339	-	52	162.4	157.75	20	20	-
T 13106	T 14340	-	53	165.4	160.78	20	20	-
T 13107	T 14341	-	54	168.4	163.82	20	20	-
T 13108	T 14342	-	55	171.4	166.85	20	20	-
T 13109	T 14343	-	56	174.5	169.88	20	20	-
T 13110	T 14344	T 14592	57	177.5	172.91	20	20	25
T 13111	T 14345	T 14593	58	180.5	175.93	20	20	25
T 13113	T 14347	T 14595	60	186.6	181.99	20	20	25
T 13114	T 14348	-	62	192.7	188.06	20	25	-
T 13116	T 14350	T 14598	64	198.7	194.12	20	25	25
T 13117	T 14351	T 14599	65	201.8	197.15	20	25	25
T 13118	-	T 14600	66	204.8	200.18	20	-	25
T 13119	T 14353	-	68	210.8	206.24	20	25	-
T 13120	T 14491	T 14602	70	216.9	212.30	20	25	25
T 13121	T 14492	T 14603	72	223.0	218.37	20	25	25
T 13122	T 14493	-	75	232.1	227.46	20	25	-
T 13123	T 14494	T 14605	76	235.1	230.49	20	25	25
-	T 65044	T 65045	78	241.2	236.55	-	25	25
T 13124	T 14495	T 14606	80	247.2	242.61	20	25	25
T 13125	T 14496	-	85	262.4	257.77	25	25	-
T 13126	T 14497	T 14608	90	277.5	272.93	25	25	25
T 13127	T 14498	T 14609	95	292.7	288.08	25	25	25
T 13128	T 14499	T 14610	100	307.8	303.25	25	25	25
T 13129	T 14500	-	110	338.2	333.55	25	25	-
T 13130	T 14501	T 14613	114	350.3	345.68	25	25	25
T 13131	T 14502	-	120	368.5	363.86	25	25	-
T 13132	T 14503	T 14614	125	383.6	379.02	25	25	25

B1	B2	B3	r3	c	b1
5.3	15.4	25.6	10	1	5.2

Re azové koleso bez náboja 1/2" x 1/8" (081-1)

pre val ekové re aze DIN 8187/ ISO R606

Oce C 43



1-radové

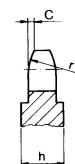
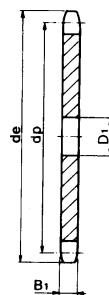
Obj. íslo	zubov	de	dp	D1	Obj. íslo	zubov	de	dp	D1
T 13134	9	43.4	37.13	8	T 13152	30	127.8	121.50	12
T 13135	10	47.4	41.10	8	T 08525	32	135.9	129.56	12
T 13136	11	51.4	45.07	8	T 13154	33	139.9	133.60	12
T 08522	12	55.4	49.07	8	T 13155	34	143.9	137.64	12
T 13137	13	59.4	53.06	8	T 13156	35	148.0	141.68	12
T 13138	14	63.4	57.07	8	T 13157	36	152.0	145.72	16
T 08523	15	67.4	61.09	8	T 13158	37	156.1	149.76	16
T 13139	16	71.4	65.10	8	T 13159	38	160.1	153.80	16
T 08524	17	75.4	69.11	8	T 13160	39	164.1	157.83	16
T 13140	18	79.4	73.14	8	T 13161	40	168.2	161.87	16
T 13141	19	83.5	77.16	8	T 13165	44	184.8	178.03	16
T 13142	20	87.5	81.19	8	T 13166	45	188.9	182.07	16
T 13143	21	91.5	85.22	8	T 13169	48	201.0	194.18	20
T 13144	22	95.5	89.24	10	T 13176	55	229.3	222.46	20
T 13145	23	99.6	93.27	10	T 13177	56	233.3	226.50	20
T 13146	24	103.6	97.29	12	T 13178	57	237.3	230.54	20
T 13147	25	107.6	101.33	12	T 13179	58	241.4	234.58	20
T 13148	26	111.7	105.36	12	T 13181	60	249.5	242.66	20
T 13149	27	115.7	109.40	12	T 13187	70	289.9	283.07	25
T 13150	28	119.7	113.42	12					

B1	r3	c	h
3	13	1.3	z≥31=4 z≥90=6

Re azové koleso bez náboja 1/2" x 3/16" (083-1/084-1)

pre val ekové re aze DIN 8187/ ISO R606

Oce C 43



1-radové

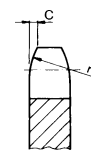
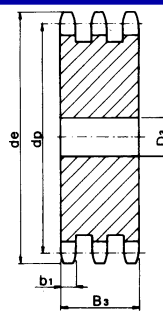
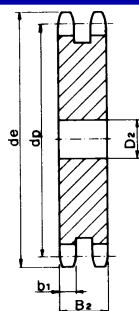
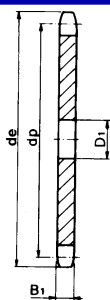
Obj. číslo	zubov	de	dp	D1	Obj. číslo	zubov	de	dp	D1
T 13195	9	43.4	37.13	8	T 13217	39	164.1	157.83	16
T 13196	10	47.4	41.10	8	T 13218	40	168.2	161.87	16
T 08526	11	51.4	45.07	8	T 13219	41	172.7	165.91	16
T 13197	12	55.4	49.07	8	T 13220	42	176.7	169.95	16
T 08527	13	59.4	53.06	8	T 13221	43	180.8	173.99	16
T 13198	14	63.4	57.07	8	T 13222	44	184.8	178.03	16
T 08528	15	67.4	61.09	8	T 13223	45	188.9	182.07	16
T 13199	16	71.4	65.10	8	T 13224	46	192.9	186.10	20
T 08529	17	75.4	69.11	8	T 13225	47	196.9	190.14	20
T 12468	18	79.4	73.14	8	T 13226	48	201.0	194.18	20
T 13200	19	83.5	77.16	8	T 13227	49	205.0	198.22	20
T 13201	20	87.5	81.19	8	T 13228	50	209.1	202.26	20
T 13202	21	91.5	85.22	8	T 13229	51	213.1	206.30	20
T 13203	22	95.5	89.24	10	T 13230	52	217.1	210.34	20
T 13204	23	99.6	93.27	10	T 13231	53	221.2	214.37	20
T 08530	24	103.6	97.29	12	T 13232	54	225.2	218.43	20
T 13205	25	107.6	101.33	12	T 13233	55	229.3	222.46	20
T 13206	26	111.7	105.36	12	T 13234	56	233.3	226.50	20
T 13207	27	115.7	109.40	12	T 13235	57	237.3	230.54	20
T 13208	28	119.7	113.42	12	T 13236	58	241.4	234.58	20
T 13209	29	123.8	117.46	12	T 13238	60	249.5	242.66	20
T 11263	30	127.8	121.50	12	T 13240	64	265.6	258.82	20
T 08531	31	131.8	125.54	12	T 13241	65	269.7	262.86	20
T 13210	32	135.9	129.56	12	T 13243	68	281.8	274.99	25
T 13211	33	139.9	133.60	12	T 13244	70	289.9	283.07	25
T 13212	34	143.9	137.64	12	T 13245	72	298.0	291.16	25
T 13213	35	148.0	141.68	12	T 13246	76	314.1	307.33	25
T 13214	36	152.0	145.72	16	T 13247	80	330.3	323.48	25
T 13215	37	156.1	149.76	16	T 13248	85	350.5	343.69	25
T 13216	38	160.1	153.80	16	T 65046	110	451.5	444.75	25

B1	r3	c	h
4.5	13	1.3	z≥90=6

Re azové koleso bez náboja 1/2" x 5/16" (08B -1 -2 -3)

pre val ekové re aze DIN 8187/ ISO R606

Oce C 43



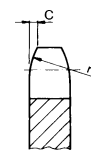
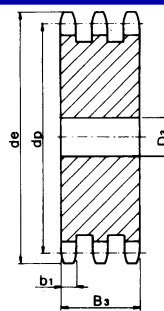
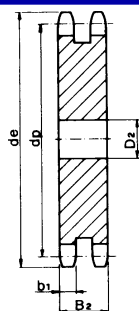
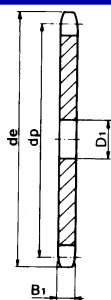
1-radové			2-radové			3-radové		
Obj. íslo	Obj. íslo	Obj. íslo	zubov	de	dp	D1	D2	D3
T 08532	-	T 14615	8	38.0	33.18	8	-	10
T 09415	T 13298	T 14616	9	42.0	37.13	8	10	10
T 10879	T 13299	T 14617	10	45.9	41.10	8	10	10
T 13251	T 13300	T 14618	11	49.9	45.07	10	10	12
T 08533	T 13301	T 14619	12	53.9	49.07	10	10	12
T 10880	T 09002	T 14620	13	57.9	53.06	10	10	12
T 10881	T 13302	T 14621	14	61.9	57.07	10	10	12
T 08534	T 09003	T 14622	15	65.9	61.09	10	10	12
T 13252	T 13303	T 14623	16	69.9	65.10	10	12	16
T 08535	T 13304	T 14624	17	74.0	69.11	10	12	16
T 08536	T 13305	T 14625	18	78.0	73.14	10	12	16
T 13253	T 13306	T 14626	19	82.0	77.16	10	12	16
T 08537	T 13307	T 14627	20	86.0	81.19	10	12	16
T 10882	T 18424	T 14628	21	90.1	85.22	12	16	16
T 13254	T 13309	T 14629	22	94.1	89.24	12	16	16
T 11264	T 13310	T 14630	23	98.1	93.27	12	16	16
T 08538	T 13311	T 14631	24	102.1	97.29	12	16	16
T 13255	T 13312	T 14632	25	106.2	101.33	12	16	16
T 10883	T 13313	T 14633	26	110.2	105.36	16	16	16
T 08539	T 13314	T 14634	27	114.2	109.40	16	16	16
T 09892	T 13315	T 14635	28	118.3	113.42	16	16	16
T 13256	T 13316	T 14636	29	122.3	117.46	16	16	16
T 10884	T 13317	T 14637	30	126.3	121.50	16	16	16
T 11265	T 13318	-	31	130.4	125.54	16	16	-
T 08540	T 13319	T 14639	32	134.4	129.56	16	16	20
T 10885	T 13320	T 14640	33	138.4	133.60	16	16	20
T 13257	T 13321	T 14641	34	142.5	137.64	16	16	20
T 08541	T 13322	T 14642	35	146.5	141.68	16	16	20
T 13258	T 13323	T 14643	36	150.6	145.72	16	20	20
T 13259	T 13324	-	37	154.6	149.76	16	20	-
T 11266	T 09559	T 14645	38	158.6	153.80	16	20	20
T 13260	T 13325	-	39	162.7	157.83	16	20	-
T 10886	T 13326	T 14647	40	166.7	161.87	16	20	20
T 13261	T 13327	-	41	172.4	165.91	20	20	-
T 09365	T 13328	T 14649	42	176.5	169.95	20	20	25
T 13262	T 13329	T 14650	43	180.5	173.99	20	20	25

B1	B2	B3	r3	c	b1
7.2	21	34.9	13	1.3	7

Re azové koleso bez náboja 1/2" x 5/16" (08B -1 -2 -3)

pre val ekové re aze DIN 8187/ ISO R606

Oce C 43



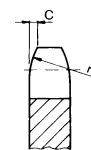
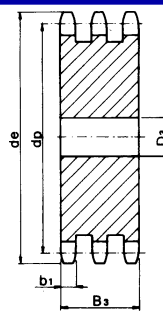
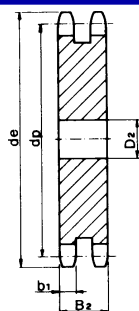
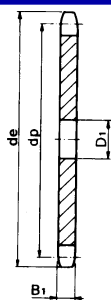
1-radové			2-radové			3-radové		
Obj. číslo	Obj. číslo	Obj. číslo	zubov	de	dp	D1	D2	D3
T 13263	T 13330	T 14651	44	184.6	178.03	20	20	25
T 13264	T 09005	T 14652	45	188.6	182.07	20	20	25
T 13265	T 13331	T 14653	46	192.6	186.10	20	20	25
T 13266	-	T 14654	47	196.7	190.14	20	-	25
T 13267	T 13333	T 14655	48	200.7	194.18	20	20	25
T 13268	T 13334	T 14656	49	204.8	198.22	20	20	25
T 13269	T 13335	T 14657	50	208.8	202.26	20	20	25
T 13270	T 13336	-	51	212.8	206.30	20	25	-
T 13271	T 09010	T 14659	52	216.9	210.34	20	25	25
T 13272	T 13337	T 14660	53	220.9	214.37	20	25	25
T 13273	T 09011	T 14661	54	225.0	218.43	20	25	25
T 13274	T 13338	T 14662	55	229.0	222.46	20	25	25
T 13275	T 13339	T 14663	56	233.0	226.50	20	25	25
T 13276	T 13340	T 14664	57	237.1	230.54	20	25	25
T 13277	T 13341	-	58	241.1	234.58	20	25	-
T 13279	T 13343	T 14667	60	249.2	242.66	20	25	25
T 13280	T 13344	T 14668	62	257.3	250.75	25	25	25
T 13281	T 13345	-	64	265.4	258.82	25	25	-
T 13282	T 13346	T 14670	65	269.4	262.86	25	25	25
T 13283	-	-	66	273.4	266.90	25	-	-
T 13284	T 13348	T 14672	68	281.5	274.99	25	25	25
T 13285	T 13349	T 14673	70	289.6	283.07	25	25	25
T 13286	T 13351	T 14674	72	297.7	291.16	25	25	25
T 13287	T 13352	T 14675	75	309.8	303.27	25	25	25
T 13288	T 13353	T 14676	76	313.9	307.33	25	25	25
T 13289	-	-	78	321.9	315.40	25	-	25
T 13290	T 13355	T 14678	80	330.0	323.48	25	25	25
T 13291	T 13356	T 14679	85	350.2	343.69	25	25	25
T 13292	T 13357	T 14680	90	370.4	363.90	25	25	25
T 13293	T 13358	T 14681	95	390.7	384.11	25	25	25
T 13294	T 13359	T 14682	100	410.9	404.31	25	25	25
T 65047	T 65049	-	110	451.3	444.74	25	25	25
T 13295	T 13360	T 14683	114	467.4	460.90	25	25	25
T 65048	T 65050	-	120	491.7	485.16	25	25	-
T 13296	T 12185	T 14684	125	511.0	505.37	25	25	25

B1	B2	B3	r3	c	b1
7.2	21	34.9	13	1.3	7

Re azové koleso bez náboja 5/8" x 3/8" (10B -1 -2 -3)

pre val ekové re aze DIN 8187/ ISO R606

Oce C 43



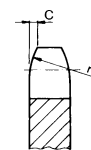
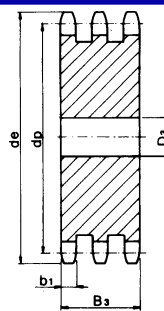
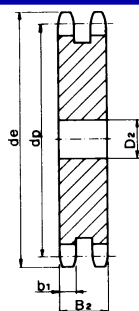
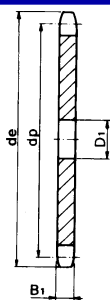
1-radové			2-radové			3-radové		
Obj. íslo	Obj. íslo	Obj. íslo	zubov	de	dp	D1	D2	D3
T 13361	T 14685	T 14756	8	48.4	41.48	10	10	12
T 13362	T 14686	T 14757	9	53.3	46.42	10	10	12
T 10701	-	-	10	58.3	51.37	10	-	-
T 13363	T 14688	-	11	63.2	56.34	10	10	-
T 08542	T 14689	-	12	68.2	61.34	10	10	-
T 13364	T 14690	T 14761	13	73.2	66.32	10	10	12
T 13365	T 14691	T 14762	14	78.2	71.34	12	10	12
T 08543	T 14692	T 14763	15	83.2	76.36	12	12	12
T 09355	T 14693	T 14764	16	88.3	81.37	12	12	16
T 08544	T 14694	T 14765	17	93.3	86.39	12	12	16
T 13366	T 14695	T 14766	18	98.3	91.42	12	12	16
T 08545	T 14696	T 14767	19	103.3	96.45	12	12	16
T 13367	T 14697	T 14768	20	108.4	101.49	12	12	16
T 13368	T 18425	T 14769	21	113.4	106.52	12	16	16
T 08546	T 14699	T 14770	22	118.4	111.55	12	16	16
T 13369	T 14700	T 14771	23	123.5	116.58	12	16	16
T 13370	T 14701	T 14772	24	128.5	121.62	12	16	16
T 13371	T 14702	T 14773	25	133.6	126.66	12	16	16
T 13372	T 14703	T 14774	26	138.6	131.70	16	20	20
T 13373	T 14704	T 14775	27	143.6	136.75	16	20	20
T 08547	T 14705	T 14776	28	148.7	141.78	16	20	20
T 13374	T 14706	T 14777	29	153.7	146.83	16	20	20
T 13375	T 14707	T 14778	30	158.8	151.87	16	20	20
T 13376	T 14708	-	31	163.8	156.92	16	20	-
T 13377	T 14709	T 14780	32	168.9	161.95	16	20	20
T 11267	T 14710	T 14781	33	173.9	167.00	16	20	20
T 13378	T 14711	T 14782	34	178.9	172.05	16	20	20
T 11268	T 14712	T 14783	35	184.0	177.10	16	20	20
T 13379	T 14713	T 14784	36	189.0	182.15	20	20	25
T 13380	T 14714	T 14785	37	194.1	187.20	20	20	25
T 13381	T 14715	T 14786	38	199.1	192.24	20	20	25
T 13382	T 14716	T 14787	39	204.2	197.29	20	20	25
T 13383	T 14717	T 14788	40	209.2	202.34	20	20	25
T 13384	-	T 14789	41	215.8	207.39	20	-	25
T 13385	T 14719	T 14790	42	220.8	212.44	20	25	25
T 13386	T 14720	-	43	225.9	217.49	20	25	-

B1	B2	B3	r3	c	b1
9.1	25.5	42.1	16	1.6	9

Re azové koleso bez náboja 5/8" x 3/8" (10B -1 -2 -3)

pre val ekové re aze DIN 8187/ ISO R606

Oce C 43



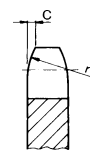
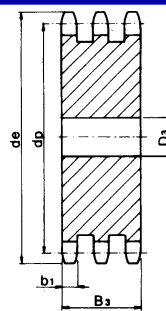
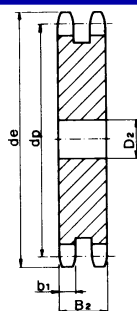
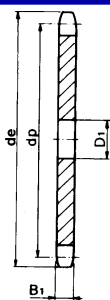
1-radové	2-radové	3-radové				1-radové	2-radové	3-radové
Obj. íslo	Obj. íslo	Obj. íslo	zubov	de	dp	D1	D2	D3
T 13387	T 14721	T 14792	44	230.9	222.53	20	25	25
T 13388	T 14722	T 14793	45	236.0	227.58	20	25	25
T 13389	T 14723	T 14794	46	241.0	232.63	20	25	25
T 13390	T 14724	-	47	246.1	237.68	20	25	25
T 13391	T 14725	T 14796	48	251.1	242.73	20	25	25
T 13392	-	-	49	256.2	247.78	20	-	-
T 13393	T 14727	T 14798	50	261.2	252.82	20	25	25
T 13394	-	-	51	266.3	257.87	20	-	-
T 13395	T 14729	T 14800	52	271.3	262.92	20	25	25
T 13396	T 14730	-	53	276.4	267.97	20	25	-
T 13397	T 14731	-	54	281.4	273.03	20	25	-
T 13398	T 14732	T 14803	55	286.5	278.08	20	25	25
T 13399	T 14733	-	56	291.5	283.13	25	25	-
T 13400	T 14734	T 14805	57	296.6	288.18	25	25	25
T 13401	T 14735	-	58	301.6	293.23	25	25	-
T 13403	T 14737	T 14808	60	311.7	303.32	25	25	25
T 13404	T 14738	-	62	321.8	313.43	25	25	-
T 13406	-	T 14811	64	331.9	323.53	25	-	30
T 13407	T 14741	T 14812	65	337.0	328.58	25	25	30
-	T 14742	-	66	342.0	333.63	-	25	-
T 13409	-	-	68	352.1	343.74	25	-	-
T 13410	T 14744	T 14815	70	362.2	353.84	25	25	30
T 13411	T 14745	-	72	372.3	363.95	25	25	-
T 13412	T 14746	T 14817	75	387.5	379.09	25	25	30
T 13413	T 14747	T 14818	76	392.5	384.16	25	25	30
T 13414	-	-	78	402.6	394.25	25	-	-
T 13415	T 14749	T 14820	80	412.7	404.35	25	25	30
T 13416	T 14750	-	85	438.0	429.62	30	30	-
T 13417	T 14751	T 14822	90	463.3	454.88	30	30	30
T 13418	T 14752	T 14823	95	488.5	480.14	30	30	30
T 13419	T 14753	-	100	513.8	505.40	30	30	-
T 65053	-	-	110	564.3	555.92	30	-	-
T 13420	T 14754	T 14825	114	584.5	576.13	30	30	30
T 65054	T 65055	-	120	614.8	606.44	30	30	-
T 13421	T 14755	T 14826	125	640.1	631.71	30	30	30

B1	B2	B3	r3	c	b1
9.1	25.5	42.1	16	1.6	9

Re azové koleso bez náboja 3/4" x 7/16" (12B -1 -2 -3)

pre val ekové re aze DIN 8187/ ISO R606

Oce C 43



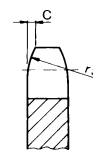
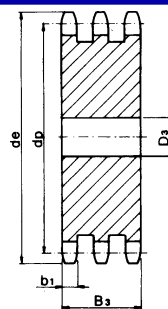
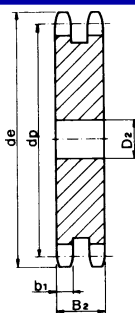
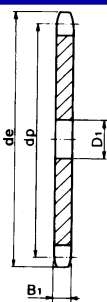
1-radové			2-radové			3-radové		
Obj. íslo	Obj. íslo	Obj. íslo	zubov	de	dp	D1	D2	D3
T 13422	T 13483	-	8	58.0	49.78	10	12	-
T 13423	-	T 14828	9	63.9	55.70	10	-	12
T 08635	-	-	10	69.8	61.64	10	-	-
T 13424	T 13486	T 14830	11	75.8	67.61	12	12	16
T 08636	T 13487	T 14831	12	81.8	73.50	14	14	16
T 13425	T 13488	T 14832	13	87.8	79.59	14	14	16
T 13426	T 13489	T 14833	14	93.8	85.61	14	16	16
T 08637	T 13490	T 14834	15	99.8	91.63	14	16	16
T 13427	T 13491	T 14835	16	105.8	97.65	14	16	20
T 08638	T 13492	T 14836	17	111.9	103.67	14	16	20
T 13428	T 13493	T 14837	18	117.9	109.71	14	16	20
T 08639	T 13494	T 14838	19	123.9	115.75	14	16	20
T 13429	T 11734	T 14839	20	130.0	121.78	14	16	20
T 13430	T 18426	T 14840	21	136.0	127.82	16	20	20
T 08640	T 13496	T 14841	22	142.0	133.86	16	20	20
T 13431	T 13497	T 14842	23	148.1	139.90	16	20	20
T 08641	T 13498	T 14843	24	154.1	145.94	16	20	20
T 13433	T 13499	T 14844	25	160.2	152.00	16	20	20
T 13434	T 13500	T 14845	26	166.2	158.04	16	20	20
T 13435	T 13501	T 14846	27	172.3	164.09	16	20	20
T 13436	T 13502	T 14847	28	178.3	170.13	16	20	20
T 13437	T 13503	T 14848	29	184.4	176.19	16	20	20
T 13438	T 13504	T 14849	30	190.4	182.25	16	20	20
T 08642	T 13505	T 14850	31	196.5	188.31	20	20	25
T 13439	T 13506	T 14851	32	202.5	194.35	20	20	25
T 13440	T 13507	T 14852	33	208.6	200.40	20	20	25
T 13441	T 13508	T 14853	34	214.6	206.46	20	20	25
T 13442	T 13509	T 14854	35	220.7	212.52	20	20	25
T 13443	T 13510	T 14855	36	226.8	218.58	20	25	25
T 13444	T 13511	T 14856	37	232.8	224.64	20	25	25
T 13445	T 13512	T 14857	38	238.9	230.69	20	25	25
T 13446	T 13513	T 14858	39	244.9	236.75	20	25	25
T 13447	T 13514	T 14859	40	251.0	242.81	20	25	25
T 13448	T 13515	-	41	258.9	248.87	25	25	-
T 13449	T 13516	T 14861	42	265.0	254.93	25	25	25
T 13450	T 13517	T 14862	43	271.1	260.98	25	25	25

B1	B2	B3	r3	c	b1
11.1	30.3	49.8	19	2	10.8

Re azové koleso bez náboja 3/4" x 7/16" (12B -1 -2 -3)

pre val ekové re aze DIN 8187/ ISO R606

Oce C 43



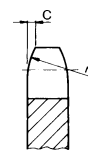
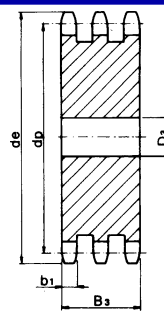
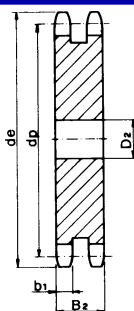
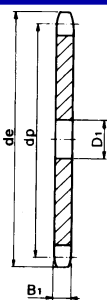
1-radové	2-radové	3-radové				1-radové	2-radové	3-radové
Obj. číslo	Obj. číslo	Obj. číslo	zubov	de	dp	D1	D2	D3
T 13451	T 13518	T 14863	44	277.1	267.03	25	25	25
T 13452	T 13519	T 14864	45	283.2	273.10	25	25	25
T 13453	T 13520	-	46	289.2	279.16	25	25	-
T 13454	T 13521	T 14866	47	295.3	285.21	25	25	25
T 13455	T 13522	T 14867	48	301.4	291.27	25	25	25
T 13456	-	-	49	307.4	297.33	25	-	-
T 13457	T 13524	T 14869	50	313.5	303.39	25	25	25
T 13458	-	-	51	319.5	309.45	25	-	-
T 13459	T 13526	T 14871	52	325.6	315.50	25	25	25
T 13460	-	-	53	331.6	321.56	25	-	-
T 13461	T 13528	T 14873	54	337.7	327.64	25	25	25
T 13462	T 13529	T 14874	55	343.8	333.70	25	25	25
T 13463	T 13530	-	56	349.8	339.75	25	25	-
T 13464	T 13531	T 14876	57	355.9	345.81	25	25	30
T 13465	T 13532	-	58	362.0	351.87	25	25	30
T 13467	T 13534	T 14879	60	374.1	363.99	25	25	30
T 13468	-	-	62	386.2	376.12	25	-	-
T 11223	T 13536	-	64	398.3	388.24	25	30	-
T 13469	T 13537	T 14882	65	404.4	394.29	25	30	30
-	-	-	66	410.1	400.35	-	-	30
T 13471	-	-	68	422.6	412.49	30	-	-
T 13472	T 13540	T 14885	70	434.7	424.60	30	30	30
T 13473	T 13541	T 14886	72	446.8	436.74	30	30	30
T 13474	T 13542	-	75	465.0	454.91	30	30	-
T 13475	T 13543	T 14888	76	471.1	460.99	30	30	30
T 65056	-	-	78	483.2	473.10	30	-	-
T 13476	T 13544	T 14889	80	495.3	485.22	30	30	30
T 13477	T 13545	T 14890	85	525.6	515.55	30	30	30
T 13478	T 13546	T 14891	90	555.9	545.86	30	30	30
T 13479	T 13547	T 14892	95	586.2	576.17	30	30	30
T 13480	T 13548	T 14893	100	616.6	606.47	30	30	30
T 65057	-	-	110	677.2	667.11	30	-	-
T 13481	T 13549	T 14894	114	701.4	691.36	30	30	30
T 65058	-	T 65059	120	737.8	727.74	30	-	30
T 13482	T 13550	T 14895	125	768.1	758.05	30	30	30

B1	B2	B3	r3	c	b1
11.1	30.3	49.8	19	2	10.8

Re azové koleso bez náboja 1"x 17.02 mm(16B -1 -2 -3)

pre val ekové re aze DIN 8187/ ISO R606

Oce C 43



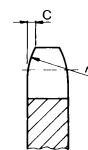
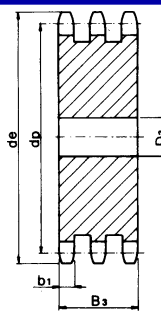
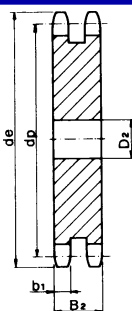
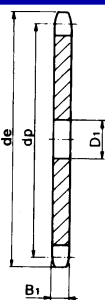
1-radové			2-radové			3-radové		
Obj. íslo	Obj. íslo	Obj. íslo	zubov	de	dp	D1	D2	D3
T 14896	T 14963	T 15031	8	77.9	66.37	16	16	16
T 14897	T 14964	T 15032	9	85.8	74.27	16	16	16
T 14898	T 14965	T 15033	10	93.8	82.19	16	16	16
T 14899	T 14966	T 15034	11	101.7	90.14	16	20	20
T 14900	T 14967	T 15035	12	109.7	98.14	16	20	20
T 14901	T 14968	T 15036	13	117.7	106.12	16	20	20
T 14902	T 14969	T 15037	14	125.7	114.15	16	20	20
T 14903	T 14970	T 15038	15	133.7	122.17	16	20	20
T 14904	T 14971	T 15039	16	141.8	130.20	20	20	25
T 14905	T 14972	T 15040	17	149.8	138.22	20	20	25
T 14906	T 14973	T 15041	18	157.8	146.28	20	20	25
T 14907	T 14974	T 15042	19	165.9	154.33	20	20	25
T 14908	T 14975	T 15043	20	173.9	162.38	20	20	25
T 14909	T 18427	T 15044	21	182.0	170.43	20	25	25
T 14910	T 14977	T 15045	22	190.1	178.48	20	25	25
T 14911	T 14978	T 15046	23	198.1	186.53	20	25	25
T 14912	T 14979	T 15047	24	206.2	194.59	20	25	25
T 14913	T 14980	T 15048	25	214.2	202.66	20	25	25
T 14914	T 14981	T 15049	26	222.3	210.72	20	25	30
T 14915	T 14982	T 15050	27	230.4	218.79	20	25	30
T 14916	T 14983	T 15051	28	238.4	226.85	20	25	30
T 14917	T 14984	T 15052	29	246.5	234.92	20	25	30
T 14918	T 14985	T 15053	30	254.6	243.00	20	25	30
T 14919	T 14986	T 15054	31	262.6	251.08	25	25	30
T 14920	T 14987	T 15055	32	270.7	259.13	25	25	30
T 14921	T 14988	T 15056	33	278.8	267.21	25	25	30
T 14922	T 14989	T 15057	34	286.9	275.28	25	25	30
T 14923	T 14990	T 15058	35	294.9	283.36	25	25	30
T 14924	T 14991	T 15059	36	303.0	291.44	25	25	30
T 14925	T 14992	-	37	311.1	299.51	25	25	-
T 14926	T 14993	T 15061	38	319.2	307.59	25	25	30
T 14927	T 14994	-	39	327.2	315.67	25	25	-
T 14928	T 14995	T 15063	40	335.3	323.73	25	25	30
T 14929	-	-	41	345.6	331.82	25	-	-
T 14930	T 14997	T 15065	42	353.7	339.90	25	25	30

B1	B2	B3	r3	c	b1
16.2	47.7	79.6	26	2.5	15.8

Re azové koleso bez náboja 1"x 17.02 mm (16B -1 -2 -3)

pre val ekové re aze DIN 8187/ ISO R606

Oce C 43



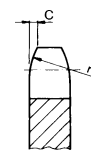
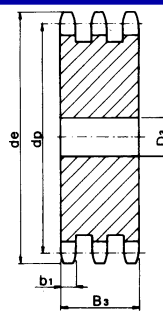
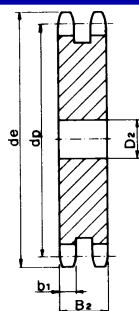
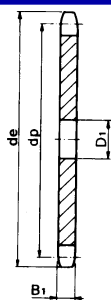
1-radové	2-radové	3-radové				1-radové	2-radové	3-radové
Obj. číslo	Obj. číslo	Obj. číslo	zubov	de	dp	D1	D2	D3
T 14931	T 14998	-	43	361.7	347.98	25	25	-
T 14932	T 14999	T 15067	44	369.8	356.06	25	25	30
T 14933	T 15000	T 15068	45	377.9	364.13	25	25	30
T 14934	T 15002	-	46	386.0	372.21	25	25	30
T 14935	-	-	47	394.1	380.29	25	-	-
T 14936	T 15004	T 15071	48	402.1	388.36	25	25	30
T 14937	-	-	49	410.2	396.44	25	-	-
T 14938	T 15006	T 15073	50	418.3	404.52	25	25	30
T 14939	-	-	51	426.4	412.60	30	-	-
T 14940	T 15008	T 15075	52	434.5	420.67	30	30	40
T 14941	-	-	53	442.5	428.75	30	-	-
T 14942	-	-	54	450.6	436.85	30	-	-
T 14943	T 15011	T 15078	55	458.7	444.93	30	30	40
T 14944	T 15012	-	56	466.8	453.01	30	40	40
T 14945	T 15013	T 15080	57	474.9	461.07	30	40	40
T 14946	-	-	58	482.9	469.16	30	-	-
T 14948	T 15016	T 15083	60	499.1	485.32	30	40	40
T 14949	T 15017	-	62	515.3	501.50	30	40	-
T 14950	-	-	64	531.4	517.65	30	-	-
T 14951	T 15019	T 15086	65	539.5	525.73	30	40	40
T 14954	T 15022	-	68	563.8	549.98	30	40	-
T 14955	T 15023	T 15090	70	579.9	566.14	30	40	40
T 14956	T 15024	T 15091	72	596.1	582.32	30	40	40
T 14957	T 15025	-	75	620.3	606.55	30	40	-
T 14958	T 15026	T 15093	76	628.4	614.65	30	40	40
T 65060	-	-	78	644.6	630.80	30	-	-
T 14959	T 15027	T 15094	80	660.7	646.96	30	40	40
T 65061	T 65066	T 65069	85	701.2	687.40	30	40	40
T 65062	T 65067	T 65070	90	741.6	727.82	30	40	40
T 14960	T 15028	T 15095	95	782.0	768.22	30	40	40
T 65063	T 65068	-	100	822.4	808.63	30	40	-
T 65064	-	-	110	903.3	889.48	30	-	-
T 14961	T 15029	T 15096	114	935.6	921.82	30	40	40
T 65065	-	-	120	984.1	970.33	30	-	-
T 14962	T 15030	T 15097	125	1024.5	1010.73	30	40	40

B1	B2	B3	r3	c	b1
16.2	47.7	79.6	26	2.5	15.8

Re azové koleso bez náboja 1 1/4" x 3/4" (20B -1 -2 -3)

pre val ekové re aze DIN 8187/ ISO R606

Oce C 43



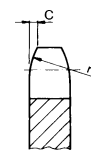
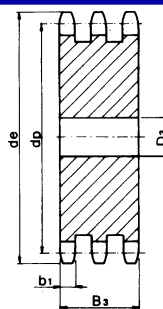
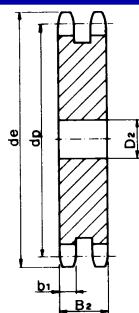
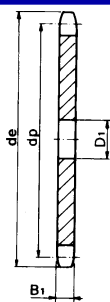
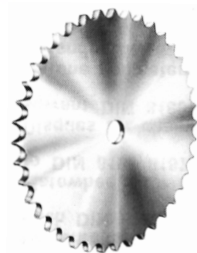
1-radové	2-radové	3-radové				1-radové	2-radové	3-radové
Obj. íslo	Obj. íslo	Obj. íslo	zubov	de	dp	D1	D2	D3
T 13551	T 15098	T 15168	8	96.0	82.96	16	20	20
T 13552	T 15099	T 15169	9	106.5	92.84	16	20	20
T 13553	T 15100	T 15170	10	117.0	102.74	16	20	20
T 13554	T 15101	T 15171	11	127.0	112.68	20	20	25
T 08648	T 15102	T 15172	12	137.0	122.68	20	20	25
T 13555	T 15103	T 15173	13	147.5	132.65	20	20	25
T 13556	T 15104	T 15174	14	157.6	142.68	20	20	25
T 13557	T 15105	T 15175	15	167.7	152.72	20	20	25
T 13558	T 15106	T 15176	16	177.7	162.75	20	30	30
T 13559	T 15107	T 15177	17	187.7	172.78	20	30	30
T 13560	T 15108	T 15178	18	197.8	182.85	20	30	30
T 13561	T 15109	T 15179	19	207.9	192.91	20	30	30
T 13562	T 15110	T 15180	20	217.9	202.98	20	30	30
T 13563	-	T 15181	21	228.0	213.04	25	30	30
T 08649	T 15112	T 15182	22	238.1	223.11	25	30	30
T 13564	T 15113	T 15183	23	248.2	233.17	25	30	30
T 13565	T 15114	T 15184	24	258.3	243.23	25	30	30
T 13566	T 15115	T 15185	25	268.4	253.33	25	30	30
T 13567	T 15116	T 15186	26	278.4	263.40	30	30	30
T 13568	T 15117	T 15187	27	288.5	273.48	30	30	30
T 13569	T 15118	T 15188	28	298.5	283.56	30	30	30
T 13570	T 15119	-	29	308.6	293.65	30	30	-
T 13571	T 15120	T 15190	30	318.7	303.75	30	30	30
T 13572	T 15121	-	31	328.8	313.85	30	30	-
T 13573	T 15122	T 15192	32	338.9	323.91	30	30	30
T 13574	-	-	33	349.0	334.01	30	-	30
T 13575	T 15124	T 15194	34	359.1	344.10	30	30	30
T 13576	T 15125	T 15195	35	369.2	354.20	30	30	30
T 13577	T 15126	T 15196	36	379.2	364.30	30	30	30
T 13578	-	-	37	389.3	374.39	30	-	-

B1	B2	B3	r3	c	b1
18.5	54.6	91	32	3.5	18.2

Re azové koleso bez náboja 1 1/4" x 3/4" (20B -1 -2 -3)

pre val ekové re aze DIN 8187/ ISO R606

Oce C 43



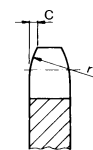
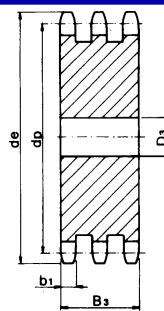
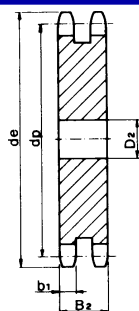
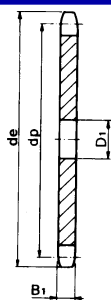
1-radové	2-radové	3-radové				1-radové	2-radové	3-radové
Obj. číslo	Obj. číslo	Obj. číslo	zubov	de	dp	D1	D2	D3
T 13579	T 15128	T 15198	38	399.4	384.49	30	30	30
T 13580	-	-	39	409.5	394.59	30	-	-
T 13581	T 15130	T 15200	40	419.6	404.66	30	30	30
T 13582	-	-	41	430.7	414.78	30	-	-
T 13583	T 15132	-	42	440.8	424.88	30	30	-
T 13584	-	-	43	450.9	434.97	30	-	-
T 13585	-	-	44	461.0	445.07	30	-	-
T 13586	T 15139	T 15205	45	471.1	455.17	30	30	40
T 13587	T 15140	-	46	481.2	465.26	30	30	-
T 13589	T 15142	-	48	501.4	485.46	30	30	-
T 13591	T 15144	T 15210	50	521.6	505.65	30	30	40
T 13593	T 15146	-	52	541.8	525.84	30	40	-
T 13595	-	-	54	562.0	546.07	30	-	-
T 13596	-	T 15215	55	572.1	556.16	30	-	40
T 13597	-	-	56	582.2	566.26	30	-	-
T 13598	T 15151	T 15217	57	592.3	576.36	30	40	40
T 13599	-	-	58	602.4	586.45	30	-	-
T 13601	T 15154	T 15221	60	622.6	606.65	30	40	40
T 13603	-	-	64	663.0	647.06	30	-	-
T 13604	T 15157	T 15224	65	673.1	657.16	30	40	40
T 13607	T 15160	T 15227	70	723.6	707.67	30	40	40
T 13609	-	-	75	774.2	758.19	30	-	-
T 13610	T 15163	T 15229	76	784.3	768.32	30	40	40
T 13611	T 15164	-	80	824.7	808.72	30	40	-
T 65071	-	-	85	875.2	859.25	30	-	-
T 65072	-	-	90	925.7	909.76	30	-	-
T 13612	T 15165	-	95	976.2	960.28	30	40	-
T 29388	-	-	100	1026.7	1010.79	40	-	-

B1	B2	B3	r3	c	b1
18.5	54.6	91	32	3.5	18.2

Re azové koleso bez náboja 1 1/2" x 1" (24B -1 -2 -3)

pre val ekové re aze DIN 8187/ ISO R606

Oce C 43



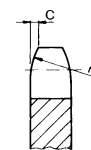
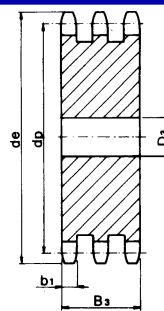
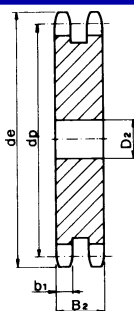
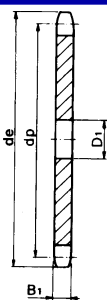
1-radové			2-radové			3-radové		
Obj. íslo	Obj. íslo	Obj. íslo	zubov	de	dp	D1	D2	D3
T 15234	T 15298	T 15385	8	113.0	99.55	20	25	25
T 15235	T 15299	T 15386	9	125.0	111.40	20	25	25
T 15236	T 15300	T 15387	10	137.0	123.29	20	25	25
T 15237	T 15301	T 15388	11	149.0	135.21	25	25	30
T 15238	T 15302	T 15389	12	161.0	147.22	25	25	30
T 15239	T 15303	T 15390	13	173.0	159.18	25	25	30
T 15240	T 15304	T 15391	14	185.0	171.22	25	25	30
T 15241	T 15305	T 15392	15	197.0	183.26	25	25	30
T 15242	T 15306	T 15393	16	209.0	195.30	25	30	30
T 15243	T 15307	T 15394	17	221.0	207.34	25	30	30
T 15244	T 15330	T 15395	18	233.0	219.42	25	30	30
T 15245	T 15331	T 15396	19	245.5	231.49	25	30	30
T 15246	T 15332	T 15397	20	257.5	243.57	25	30	30
T 15247	T 65076	T 15398	21	270.5	255.65	30	30	40
T 15248	T 15334	T 15399	22	282.5	267.73	30	30	40
T 15249	T 15335	T 15400	23	294.5	279.80	30	30	40
T 15250	T 15336	T 15401	24	307.0	291.88	30	30	40
T 15251	T 15337	T 15402	25	319.0	304.00	30	30	40
T 15252	T 15338	T 15403	26	331.0	316.08	30	30	40
T 15253	T 15339	T 15404	27	343.0	328.19	30	30	40
T 15254	T 15340	T 15405	28	355.0	340.27	30	30	40
T 15255	T 15341	-	29	367.5	352.38	30	30	-
T 15256	T 15342	T 15407	30	379.5	364.50	30	30	40
T 15257	T 15343	-	31	391.5	376.62	30	40	-
T 15258	T 15344	T 15409	32	403.5	388.69	30	40	40
T 15259	T 15345	-	33	415.5	400.81	30	40	-

B1	B2	B3	r3	c	b1
24.1	72	120.3	38	4	23.6

Re azové koleso bez náboja 1 1/2" x 1" (24B -1 -2 -3)

pre val ekové re aze DIN 8187/ ISO R606

Oce C 43



1-radové 2-radové 3-radové

Obj. číslo Obj. číslo Obj. číslo

T 15260	T 15346	-
T 15261	T 15347	T 15412
T 15262	T 15348	-
T 15263	T 15349	-
T 15264	T 15350	T 15415
T 15266	T 15352	T 15417
T 15267	-	-
T 15268	T 15354	-
T 15271	T 15357	T 15422
T 15272	-	-
T 15274	T 15360	T 15425
T 15276	T 15362	T 15427
T 15278	-	-
T 15280	-	-
T 15281	-	-
T 15282	-	-
T 15283	T 15369	T 15434
T 15286	T 15372	T 15437
T 15287	-	-
T 15289	T 15375	-
T 15292	-	-
T 15295	T 15382	T 15446
T 65077	-	-
T 15296	-	-
T 15297	T 77452	-

zubov

de

dp

1-radové

2-radové

3-radové

D1

D2

D3

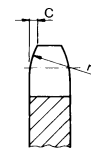
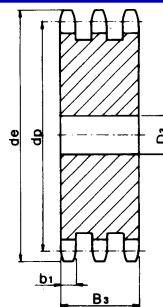
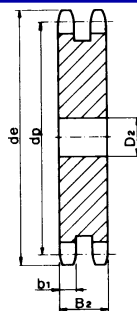
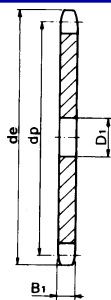
34	428.0	412.93	30	40	-
35	440.0	425.04	30	40	40
36	452.0	437.16	30	40	-
37	464.0	449.27	30	40	-
38	476.5	461.39	30	40	40
40	501.5	485.62	30	40	40
41	513.5	497.74	30	-	-
42	525.5	509.85	30	40	-
45	562.0	546.20	30	40	40
46	574.0	558.32	30	-	-
48	598.5	582.55	30	40	40
50	622.5	606.78	30	40	40
52	647.0	631.01	30	-	-
54	671.0	655.25	30	-	-
55	683.5	667.40	30	-	-
56	695.5	679.50	30	-	-
57	707.5	691.63	30	40	40
60	745.0	727.97	30	40	40
62	769.0	752.24	40	-	-
65	805.5	788.59	40	40	-
70	866.0	849.21	40	-	-
76	939.0	921.98	40	40	40
80	987.5	970.44	40	-	-
85	1048.0	1031.10	40	-	-
95	1169.0	1152.33	40	-	-

B1	B2	B3	r3	c	b1
24.1	72	120.3	38	4	23.6

Re azové koleso bez náboja 1 3/4" x 1 1/4" (28B -1 -2 -3)

pre val ekové re aze DIN 8187/ ISO R606

Oce C 43



1-radové 2-radové 3-radové

Obj. číslo Obj. číslo Obj. číslo

Na opýtanie	Na opýtanie	Na opýtanie
----------------	----------------	----------------

zubov 1-radové 2-radové 3-radové

de dp D1 D2 D3

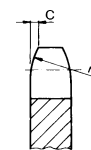
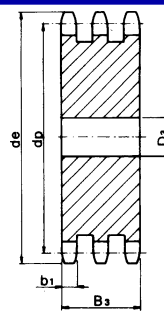
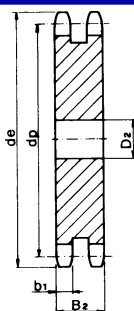
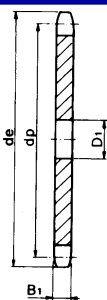
zubov	de	dp	D1	D2	D3
8	132.0	116.15	20	25	25
9	146.0	129.96	20	25	25
10	160.0	143.85	20	25	25
11	174.0	157.77	25	30	30
12	188.0	171.74	25	30	30
13	204.0	185.75	25	30	30
14	218.0	199.76	25	30	30
15	232.0	213.79	25	30	30
16	246.0	227.84	30	30	30
17	260.0	241.90	30	30	30
18	274.0	255.98	30	30	30
19	289.0	270.06	30	30	30
20	303.0	284.15	30	30	30
21	317.0	298.24	30	30	40
22	331.0	312.34	30	30	-
23	345.0	326.44	30	30	40
24	359.0	340.55	30	30	-
25	373.0	354.66	30	30	40
26	387.0	368.77	30	40	-
27	401.0	382.88	30	-	-
28	416.0	397.00	30	40	-
30	444.0	425.24	30	40	40
32	472.0	453.49	30	-	-
34	500.0	481.75	30	-	-
35	514.0	495.88	30	40	-
36	529.0	510.01	30	-	-
38	557.0	538.27	30	40	40
40	585.0	566.54	30	40	40
45	656.0	637.22	30	40	-
50	726.0	707.91	30	40	-
57	825.0	806.90	40	40	40
60	869.0	849.32	40	-	-
76	1095.0	1075.62	40	40	40

B1	B2	B3	r3	c	b1
29.4	88.4	148	44	5	28.8

Re azové koleso bez náboja 2" x 1 1/4" (32B -1 -2 -3)

pre val ekové re aze DIN 8187/ ISO R606

Oce C 43



1-radové 2-radové 3-radové

Obj. íslo Obj. íslo Obj. íslo

Na opýtanie	Na opýtanie	Na opýtanie
----------------	----------------	----------------

zubov de dp 1-radové 2-radové 3-radové
D1 D2 D3

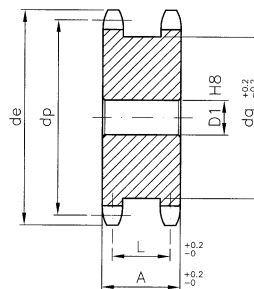
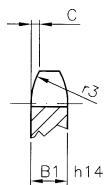
8	152.0	132.74	25	25	25
9	168.0	148.54	25	25	25
10	184.0	164.39	25	25	25
11	200.0	180.31	30	35	35
12	216.0	196.29	30	35	35
13	235.0	212.29	30	35	35
14	251.0	228.29	30	35	35
15	267.0	244.30	30	35	35
16	283.0	260.40	30	40	40
17	299.0	276.46	30	40	40
18	315.0	292.55	30	40	40
19	331.0	308.66	30	40	40
20	347.0	324.71	40	40	40
21	363.0	340.82	40	40	40
22	379.0	356.98	40	40	-
23	396.0	373.08	40	40	40
24	412.0	389.18	40	40	-
25	428.0	405.33	40	40	40
26	444.0	421.44	40	40	-
28	476.0	453.69	40	40	-
30	508.0	486.00	40	40	40
32	541.0	518.27	40	-	-
35	589.0	566.71	40	40	40
38	638.0	615.16	40	40	40
40	670.0	647.47	40	40	-
45	751.0	728.24	40	40	40
50	832.0	809.04	40	40	40
57	945.0	922.16	40	40	40
60	993.0	970.65	40	-	-
76	1252.0	1229.27	40	40	40

B1	B2	B3	r3	c	b1
29.4	87.4	146	51	6	28.8

Re azové koleso pre dve jednoradové re aze

pre val ekové re aze DIN 8187/ ISO R606

Oce C 43



3/8" x 7/32" (06 B-1)

Obj. íslo	zubov	D1	de	dp	dm	A	L
F 03178	13	10	43.5	39.80	29	23	17.8
F 03179	14	10	46.5	42.80	32	23	17.8
F 03180	15	10	49.5	45.81	35	23	17.8
F 03181	16	12	52.5	48.82	38	23	17.8
F 03182	17	12	55.5	51.83	41	23	17.8
F 03183	18	12	58.6	54.85	44	23	17.8
F 03184	19	12	61.6	57.87	47	23	17.8
F 03185	20	15	64.6	60.89	50	23	17.8
F 03186	21	15	67.6	63.91	53	23	17.8
F 03187	23	15	73.7	69.95	60	23	17.8
F 03188	25	15	79.7	76.00	66	23	17.8

1/2" x 5/16" (08B-1)

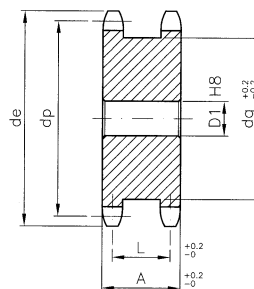
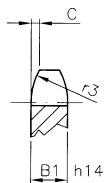
Obj. íslo	zubov	D1	de	dp	dm	A	L
F 03189	12	15	53.9	49.07	36	30	23
F 03190	13	15	57.9	53.06	40	30	23
F 03191	14	15	61.9	57.07	44	30	23
F 03192	15	15	65.9	61.09	48	30	23
F 03193	16	15	69.9	65.10	52	30	23
F 03194	17	15	74.0	69.11	56	30	23
F 03195	18	15	78.0	73.14	60	30	23
F 03196	19	15	82.0	77.16	64	30	23
F 03197	20	15	86.0	81.19	68	30	23
F 03198	21	15	90.1	85.22	72	30	23
F 03199	23	15	98.1	93.27	80	30	23
F 03200	25	15	106.2	101.33	88	30	23

	B1	r3	C
06B-1	5.3	10	1.0
08B-1	7.2	13	1.3

Re azové koleso pre dve jednoradové re aze

pre val ekové re aze DIN 8187/ ISO R606

Oce C 43



5/8" x 3/8" (10B-1)

Obj. íslo	zubov	D1	de	dp	dm	A	L
F 03201	12	15	68.2	61.34	45	34	25.2
F 03202	13	15	73.2	66.32	50	34	25.2
F 03203	14	15	78.2	71.34	55	34	25.2
F 03204	15	15	83.2	76.36	60	34	25.2
F 03205	16	15	88.3	81.37	65	34	25.2
F 03206	17	15	93.3	86.39	70	34	25.2
F 03207	18	15	98.3	91.42	75	34	25.2
F 03208	19	20	103.3	96.45	80	34	25.2
F 03209	20	20	108.4	101.49	85	34	25.2
F 03210	21	20	113.4	106.52	90	34	25.2
F 03211	23	20	123.5	116.58	100	34	25.2
F 03212	25	20	133.6	126.66	110	34	25.2

3/4" x 7/16" (12B-1)

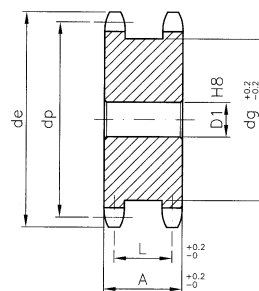
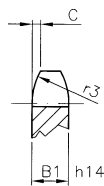
Obj. íslo	zubov	D1	de	dp	dm	A	L
F 03213	12	20	81.8	73.6	53	44	33.4
F 03214	13	20	87.8	79.59	59	44	33.4
F 03215	14	20	93.8	85.61	65	44	33.4
F 03216	15	20	99.8	91.63	71	44	33.4
F 03217	16	20	105.8	97.65	77	44	33.4
F 03218	17	20	111.9	103.67	83	44	33.4
F 03219	18	20	117.9	109.71	89	44	33.4
F 03220	19	20	123.9	115.75	95	44	33.4
F 03221	20	20	130	121.78	101	44	33.4
F 03222	21	25	136	127.82	107	44	33.4
F 03223	23	25	148.1	139.9	119	44	33.4
F 03224	25	25	160.2	152	131	44	33.4

	B1	r3	C
10B-1	9.1	16	1.6
12B-1	11.1	19	2.0

Re azové koleso pre dve jednoradové re aze

pre val ekové re aze DIN 8187/ ISO R606

Oce C 43



1" x 17,02" (16B-1)

Obj. íslo	zubov	D1	de	dp	dm	A	L
F 03225	12	20	109.7	98.14	72	68	52.5
F 03226	13	20	117.7	106.12	80	68	52.5
F 03227	14	20	125.7	114.15	88	68	52.5
F 03228	15	20	133.7	122.17	96	68	52.5
F 03229	16	25	141.8	130.20	104	68	52.5
F 03230	17	25	149.8	138.22	112	68	52.5
F 03231	18	25	157.8	146.28	120	68	52.5
F 03232	19	30	165.9	154.33	128	68	52.5
F 03233	21	30	182.0	170.43	144	68	52.5

	B1	r3	C
16B-1	16.2	26	2.5